



TAYLOR GIBBS

Residential Sales, Lettings & Management Agents

Miranda Road, Whitehall Park, N19
Price £475 pw - To Let

A two bedroom apartment occupying the first floor of a period conversion with direct access to a section of rear garden situated within close walking distance to Archway Underground Station. Boasting laminate wood floors throughout, the accommodation comprises a spacious reception room which is open plan to the kitchen, two double bedrooms and a bathroom. Externally there is direct access from the hallway to a section of the rear garden. The property is located in the Whitehall Park Conservation area and is within easy reach of Highgate Village, Crouch End and Waterlow Park.

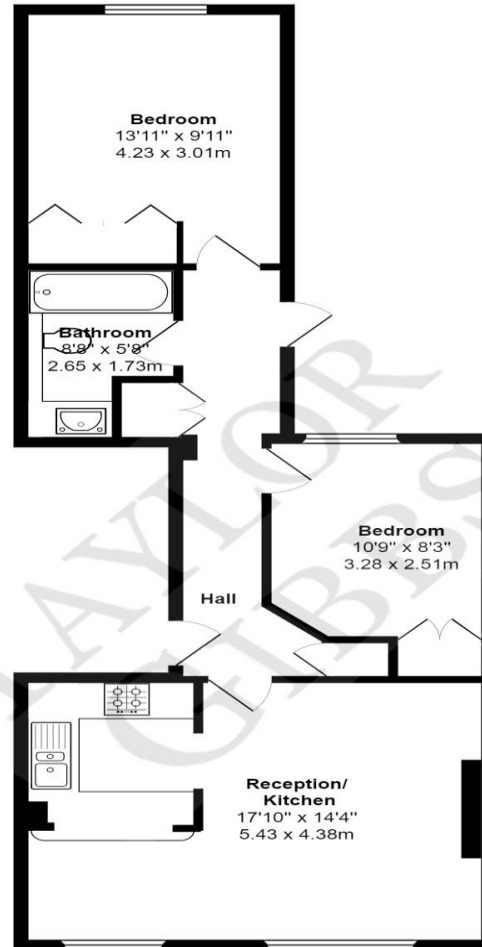
Council Tax: Islington Band D

Please note that £475 per week is the equivalent of £2058.33p per calendar month.

Tenancy Term: 12 months

Approx. Floor Area: 640 sqft (59.46 sqm)





First Floor

Miranda Road N19
Total Area: 640 ft² ... 59.4 m²

All measurements are approximate and for display purposes only

Energy Efficiency Rating		
	Current	Potential
Very energy efficient - lower running costs		
(92-100) A		
(81-91) B		
(69-80) C	69	79
(55-68) D		
(39-54) E		
(21-38) F		
(1-20) G		
Not energy efficient - higher running costs		
England & Wales	EU Directive 2002/91/EC	



TAYLOR GIBBS

Residential Sales, Lettings & Management Agents

33 Highgate High Street, Highgate, London, N6 5JT
Tel: 020 8341 0123
enquiries@taylorgibbs.co.uk
www.taylorgibbs.co.uk

