



**TAYLOR GIBBS**

Residential Sales, Lettings & Management Agents

**Dartmouth Park Hill, Archway, N19**  
**Price £550 pw - To Let**

A spacious three bedroom church conversion situated within close walking distance to Archway Underground Station. Accessed from a private entrance and arranged over three floors, the accommodation comprises a reception room open plan to the kitchen, bathroom and three double bedrooms. The property is serviced by electric central heating with fibre broadband available and CPZ street parking. It's conveniently located within close walking distance to the amenities of both Highgate Village and Archway along with the picturesque surroundings of Waterlow Park and Hampstead Heath.

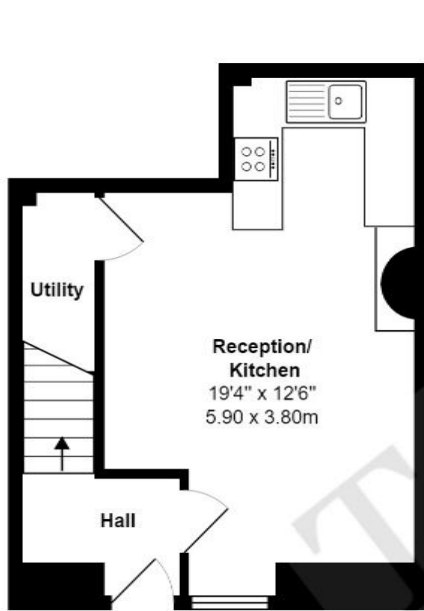
Please note that £550 per week is equivalent to £2,383.33p per calendar month

Council Tax: Islington Band F

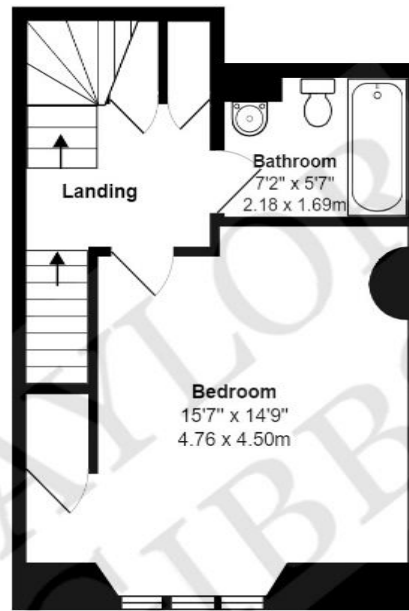
Tenancy Term: 12 months

Approx. Floor Area: 1009 sqft (93.7 sqm)

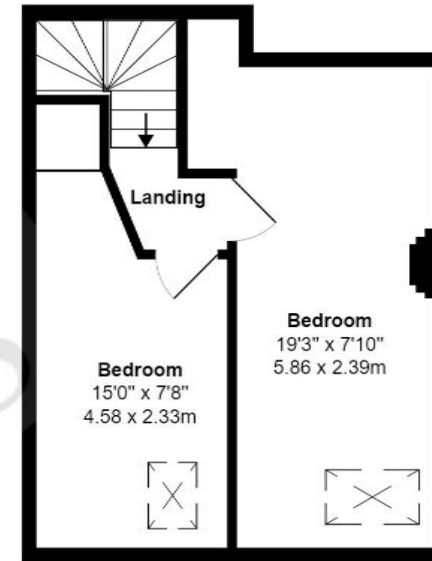




Ground Floor



First Floor



Second Floor

### St. Peters Church N19

Total Area: 1009 ft<sup>2</sup> ... 93.7 m<sup>2</sup>

All measurements are approximate and for display purposes only

Energy Efficiency Rating		Current	Potential
<i>Very energy efficient - lower running costs</i>			
(92 Plus) <b>A</b>			
(81-91) <b>B</b>			
(69-80) <b>C</b>			
(55-68) <b>D</b>			63
(39-54) <b>E</b>		40	
(21-38) <b>F</b>			
(1-20) <b>G</b>			
<i>Not energy efficient - higher running costs</i>			
England & Wales		EU Directive 2002/91/EC	



# TAYLOR GIBBS

Residential Sales, Lettings & Management Agents

33 Highgate High Street, Highgate, London, N6 5JT  
 Tel: 020 8341 0123  
 enquiries@taylorgibbs.co.uk  
 www.taylorgibbs.co.uk

