



**TAYLOR GIBBS**

Residential Sales, Lettings & Management Agents

**Milton Road, Highgate, N6**  
**Price £450 pw - To Let**

A two bedroom newly decorated split level raised ground floor apartment forming part of this Edwardian period conversion situated within close walking distance of Highgate Underground Station. Benefiting from an array of period features including high ceilings and a bay window, the accommodation comprises of a spacious reception room with wooden floors that is open plan to a fitted kitchen, two double bedrooms, both with fitted wardrobes, bathroom and a separate WC. The property is ideally located within walking distance of Highgate Village and Crouch End Broadway and only moments away from the peaceful setting of Parkland Walk.

Please note that £1950 per calendar month is the equivalent of £450 per week

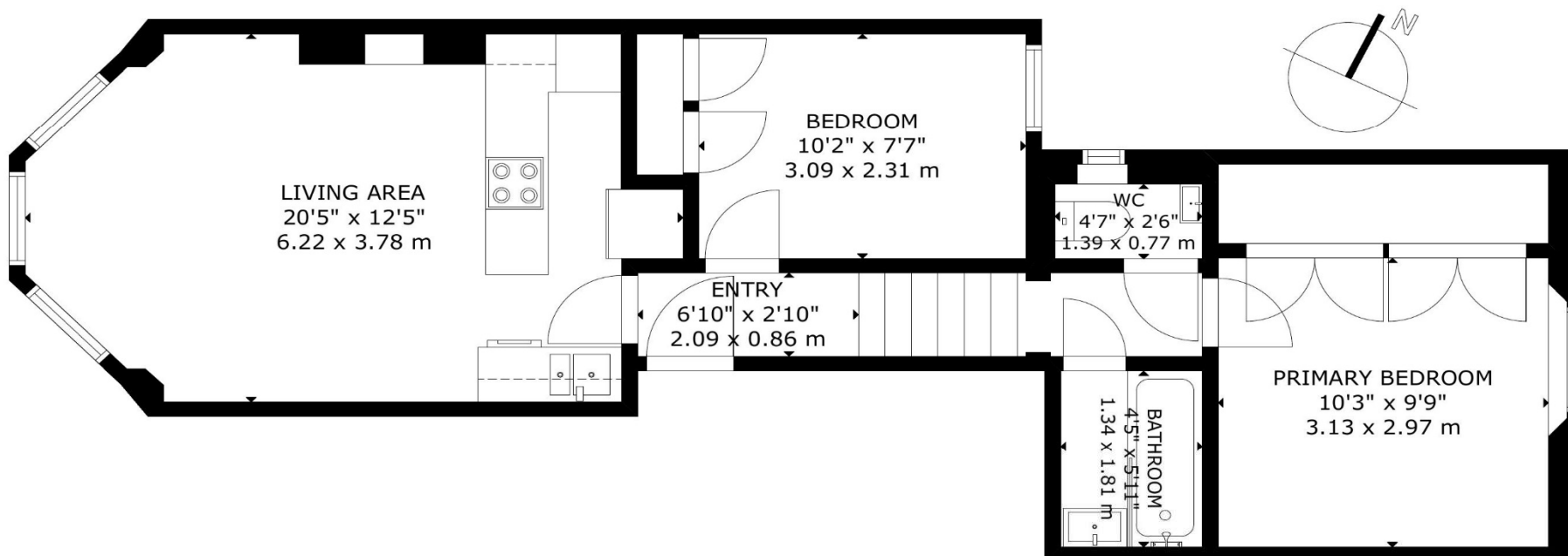
Council Tax: Haringey Band D

Tenancy Term: 12 months

Approx. Floor Area: 549 sqft (51 sqm)







Energy Efficiency Rating		
	Current	Potential
Very energy efficient - lower running costs		
(92-100) <b>A</b>		
(81-91) <b>B</b>		
(69-80) <b>C</b>		
(55-68) <b>D</b>	67	76
(39-54) <b>E</b>		
(21-38) <b>F</b>		
(1-20) <b>G</b>		
Not energy efficient - higher running costs		
England & Wales	EU Directive 2002/91/EC	

GROSS INTERNAL AREA  
TOTAL: 51 m<sup>2</sup>/549 sq.ft  
GROUND FLOOR: 51 m<sup>2</sup>/549 sq.ft  
SIZE AND DIMENSIONS ARE APPROXIMATE, ACTUAL MAY VARY



# TAYLOR GIBBS

Residential Sales, Lettings & Management Agents

33 Highgate High Street, Highgate, London, N6 5JT

Tel: 020 8341 0123

enquiries@taylorgibbs.co.uk

www.taylorgibbs.co.uk

