



TAYLOR GIBBS

Residential Sales, Lettings & Management Agents

Hornsey Lane, Highgate, N6
Price £525 pw - To Let

A very spacious two double bedroom top floor flat boasting sole use of a large south roof terrace with panoramic views across central London and the Olympic Village situated within walking distance to both Crouch End Broadway and Highgate Village. The accommodation comprises of a reception room open plan to a kitchen, bathroom and two equally proportioned double bedrooms. There is also one off street parking space on a first come first served basis. The property is conveniently located within close proximity to both Highgate and Archway Underground Station.

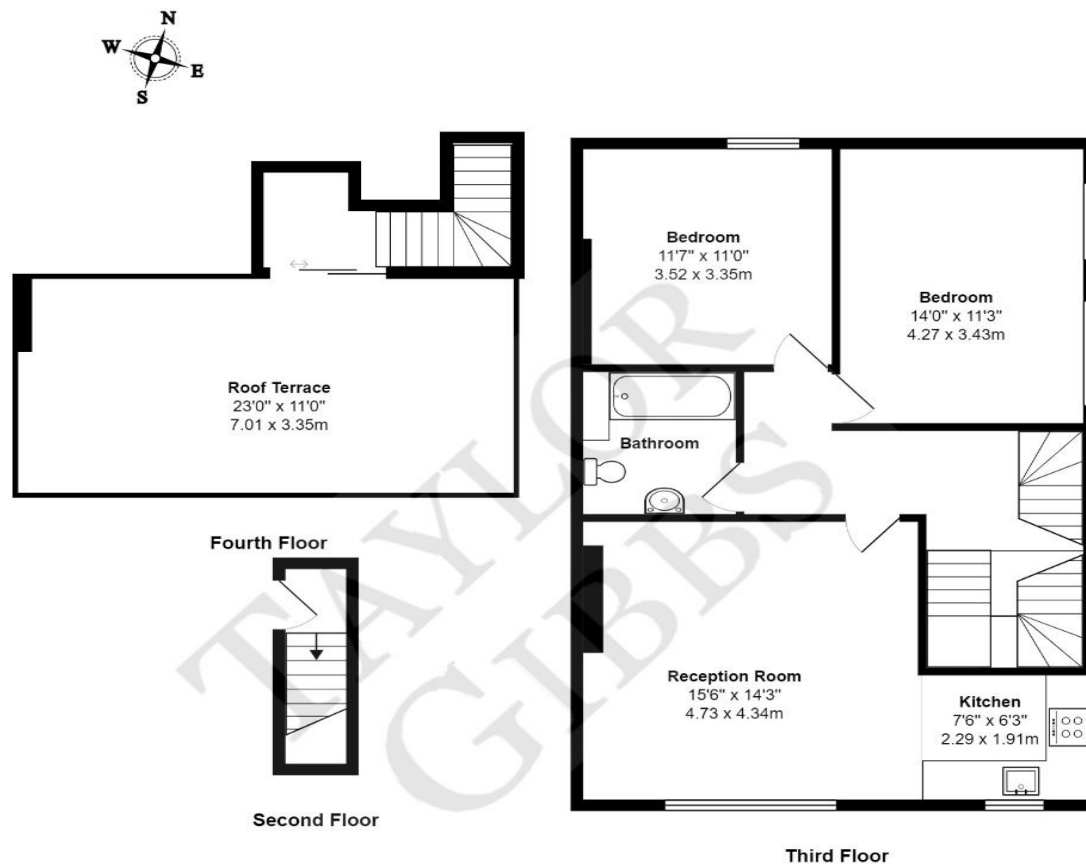
Please note that £525 per week is the equivalent of £2,275 per calendar month

Council Tax: Haringey Band E

Tenancy Term: 12 months

Approx. Floor Area: 800 sqft (74.32 sqm)





Hornsey Lane N6
Total Area: 800 ft² ... 74.3 m²

Energy Efficiency Rating		
	Current	Potential
Very energy efficient - lower running costs		
(92-100) A		
(81-91) B		
(69-80) C	76	83
(55-68) D		
(39-54) E		
(21-38) F		
(1-20) G		
Not energy efficient - higher running costs		
England & Wales	EU Directive 2002/91/EC	



TAYLOR GIBBS

Residential Sales, Lettings & Management Agents

33 Highgate High Street, Highgate, London, N6 5JT

Tel: 020 8341 0123

enquiries@taylorgibbs.co.uk

www.taylorgibbs.co.uk

