



TAYLOR GIBBS

Residential Sales, Lettings & Management Agents

Archway Road, Highgate, N6
Price £350 pw - To Let

A first floor one bedroom apartment forming part of this period conversion only moments away from Highgate Underground Station. Boasting a large decked south west facing roof terrace, the accommodation comprises of a spacious reception room open planned to a fully fitted kitchen, double bedroom with fitted wardrobes and a bathroom. The apartment is ideally situated within walking distance to the restaurants, cafes and bars of Highgate Village.

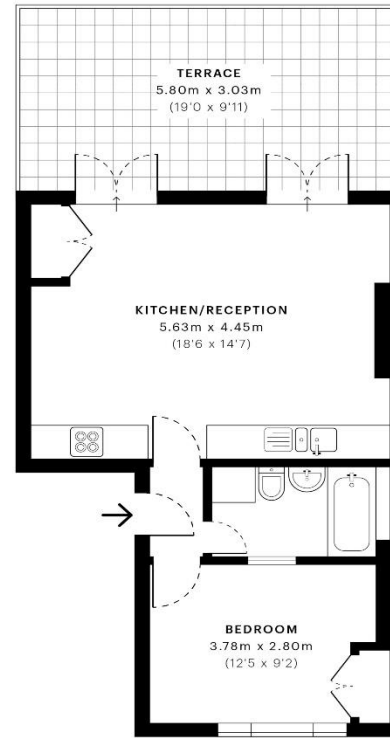
Please note that £350 per week is the equivalent of £1516.67 per calendar month.

Council Tax: Haringey Band D

Tenancy Term: 12 months

Approx. Floor Area: 456 sqft (42.36 sqm)





— First Floor

Energy Efficiency Rating		Current	Potential
Very energy efficient - lower running costs			
(92-100) A			
(81-91) B			
(69-80) C			
(55-68) D		64	74
(39-54) E			
(21-38) F			
(1-20) G			
Not energy efficient - higher running costs			
England & Wales		EU Directive 2002/91/EC	

GROSS INTERNAL AREA (GIA)
The footprint of the property:
42.39 sqm / 456.28 sqft

NET INTERNAL AREA (NIA)
Excludes walls and external features:
30.55 sqm / 330.68 sqft

EXTERNAL STRUCTURAL FEATURES
Structural, internal, external and:
17.31 sqm / 186.37 sqft

ROOF TYPE HEAD HEIGHT
Standard 2.4m (8'0") (2.3m)
0.00 sqm / 0.00 sqft



Spec Verified floor plans are produced in accordance with:
Royal Institution of Chartered Surveyors' Property Measurement Standards.
Plans are generated automatically and are not to be used for legal purposes.
Due to rounding, numbers may not add up precisely.
All measurements shown for the individual rooms lengths and widths
are the maximum points of measurement captured in the scan.

FINAL MEASUREMENT: 42.39 sqm / 456.28 sqft
FINAL RECOMMENDATION: 42.39 sqm / 456.28 sqft

SPEC ID: 5641886fca876dfe0dc292191d



