



# TAYLOR GIBBS

Residential Sales, Lettings & Management Agents

**Milton Road, Highgate**  
**Price £1,850 pcm - To Let**



A spacious one bedroom split level apartment occupying the raised ground floor of this Edwardian terraced property situated within close walking distance to Highgate Underground Station. Boasting an array of period features, the accommodation comprises a spacious reception room with a period fireplace, separate kitchen with space for dining, a recently refurbished bathroom and a large double bedroom with fitted wardrobes. Milton Road is a peaceful, tree-lined street in Highgate which provides easy access to Highgate Village and Crouch End Broadway with its transport links and array of shops and restaurants.

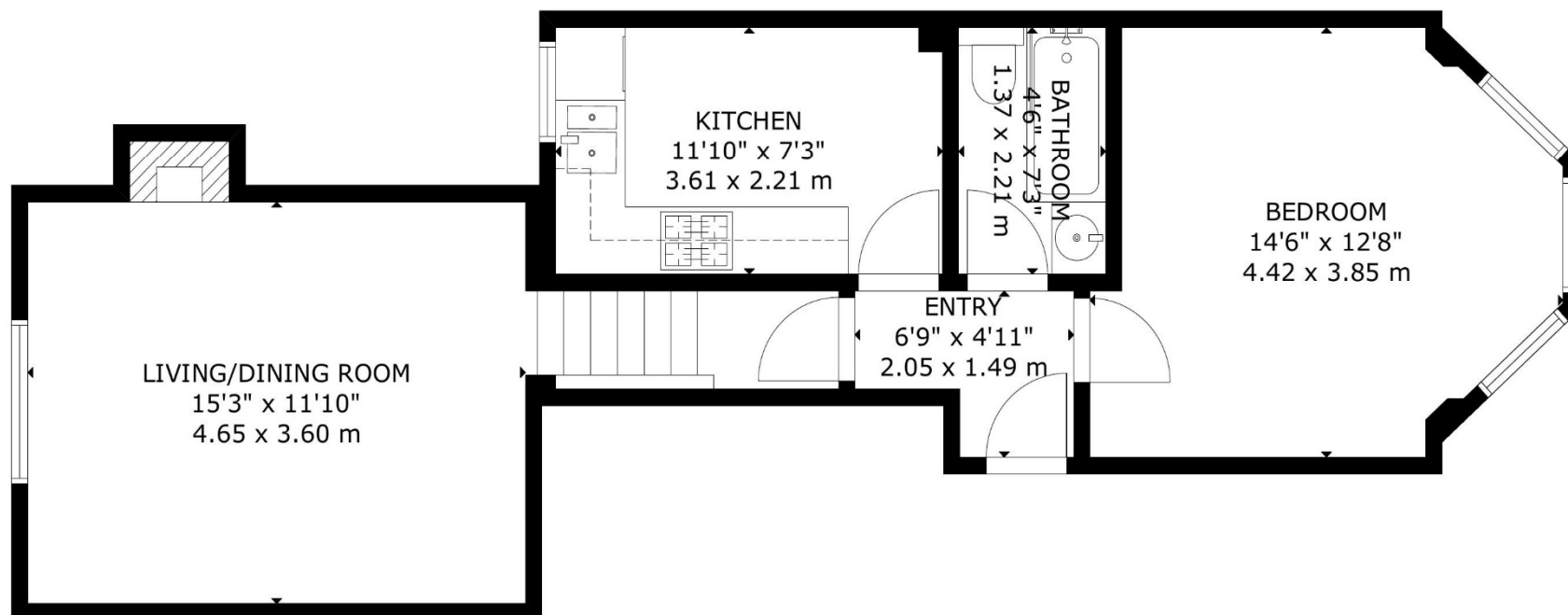
Please note that £1,850 per calendar month is the equivalent of £426.92

Council Tax: Haringey Band C

Tenancy Term: 12 months

Approx. Floor Area: 536 sqft (49.8 sqm)





GROSS INTERNAL AREA  
TOTAL: 50 m<sup>2</sup>/536 sq.ft  
GROUND FLOOR: 50 m<sup>2</sup>/536 sq.ft  
SIZE AND DIMENSIONS ARE APPROXIMATE, ACTUAL MAY VARY

Energy Efficiency Rating		
	Current	Potential
Very energy efficient - lower running costs		
(92-100) <b>A</b>		
(81-91) <b>B</b>		
(69-80) <b>C</b>		
(55-68) <b>D</b>	67	76
(39-54) <b>E</b>		
(21-38) <b>F</b>		
(1-20) <b>G</b>		
Not energy efficient - higher running costs		
England & Wales	EU Directive 2002/91/EC	



# TAYLOR GIBBS

Residential Sales, Lettings & Management Agents

33 Highgate High Street, Highgate, London, N6 5JT

Tel: 020 8341 0123

enquiries@taylorgibbs.co.uk

www.taylorgibbs.co.uk



