



TAYLOR GIBBS

Residential Sales, Lettings & Management Agents

Milton Road, Highgate, N6
Price £1,850 pcm - To Let

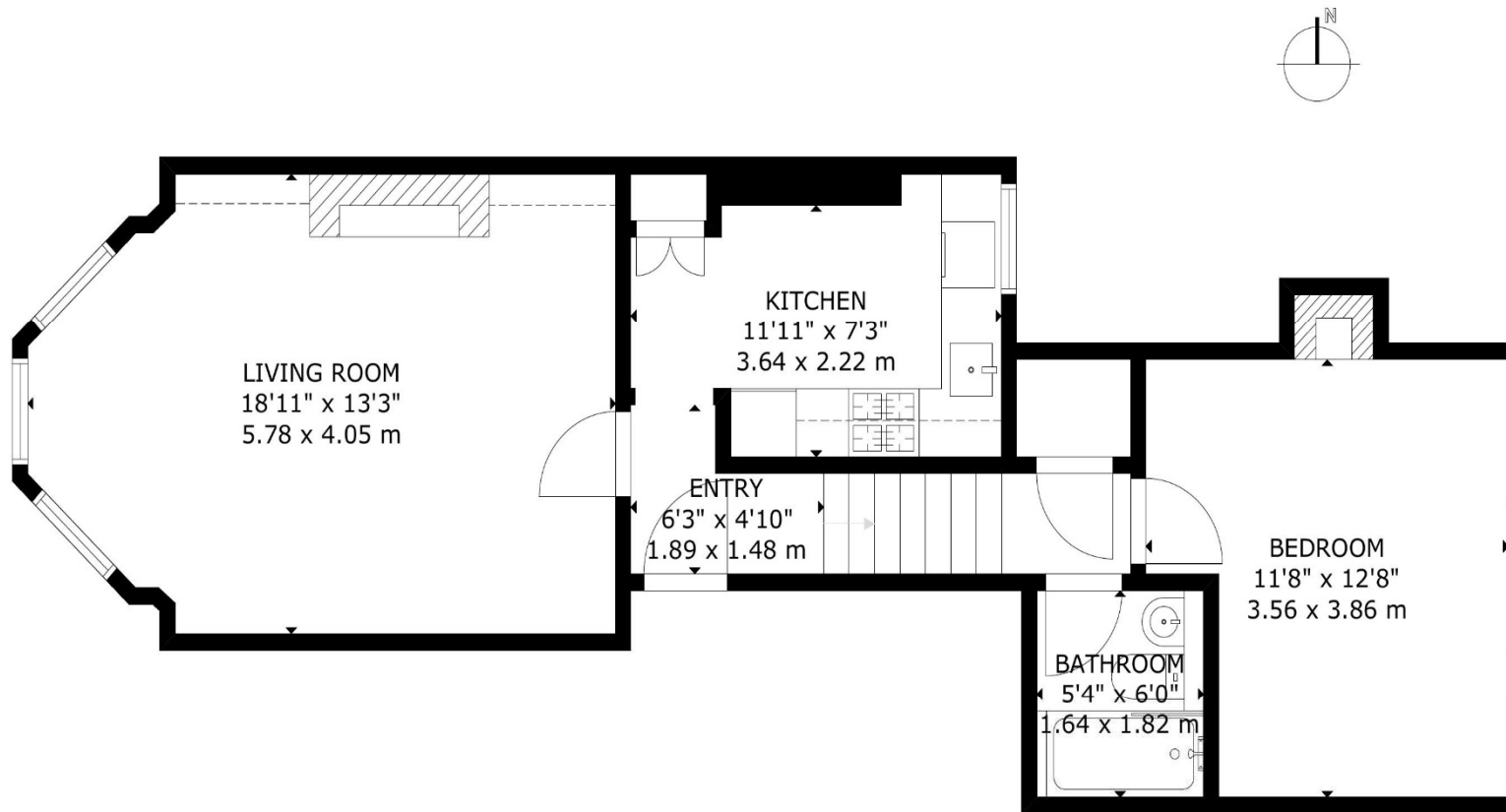
A newly decorated and extremely spacious one bedroom split level apartment occupying the raised ground floor of this Edwardian period conversion within close walking distance to Highgate Underground Station. Boasting an array of period features throughout, the accommodation comprises a large south west facing reception room with a fireplace and wooden floors, separate kitchen, double bedroom with fitted wardrobes and a newly installed bathroom. The property has gas central heating, fibre broadband, mobile phone reception is available and there is street CPZ parking. The property is conveniently situated within walking distance to the multiple amenities in both Highgate Village and Crouch End Broadway and only moments away from the picturesque surroundings of Parkland Walk.

Please note that £1,850 per calendar month is the equivalent of £426.92 per week

Council Tax: Haringey Band D

Tenancy Term: 12 months





GROSS INTERNAL AREA
TOTAL: 53 m²/574 sq ft
GROUND FLOOR: 53 m²/574 sq ft
SIZE AND DIMENSIONS ARE APPROXIMATE, ACTUAL MAY VARY

Energy Efficiency Rating		
	Current	Potential
Very energy efficient - lower running costs		
(92-100) A		
(81-91) B		
(69-80) C		
(55-68) D		
(39-54) E		
(21-38) F		
(1-20) G		
Not energy efficient - higher running costs		
England & Wales	72	81
EU Directive 2002/91/EC		



TAYLOR GIBBS

Residential Sales, Lettings & Management Agents

33 Highgate High Street, Highgate, London, N6 5JT

Tel: 020 8341 0123

enquiries@taylorgibbs.co.uk

www.taylorgibbs.co.uk

