



TAYLOR GIBBS

Residential Sales, Lettings & Management Agents

Milton Avenue, Highgate, N6
Price £2,150 per calendar month - To Let

An extremely spacious one bedroom split level apartment occupying the raised ground floor of an Edwardian terraced house. Boasting an array of period features throughout, the accommodation comprises of a large south west facing reception room with a fireplace and wooden floors, modern fully fitted kitchen, a double bedroom with fitted wardrobes and a bathroom. Further benefits to the apartment include a large storage cupboard and a communal loft space accessed from the communal hallways. The property is conveniently situated within close walking distance of Highgate Underground Station along with the multiple amenities of both Highgate Village and Crouch End Broadway.

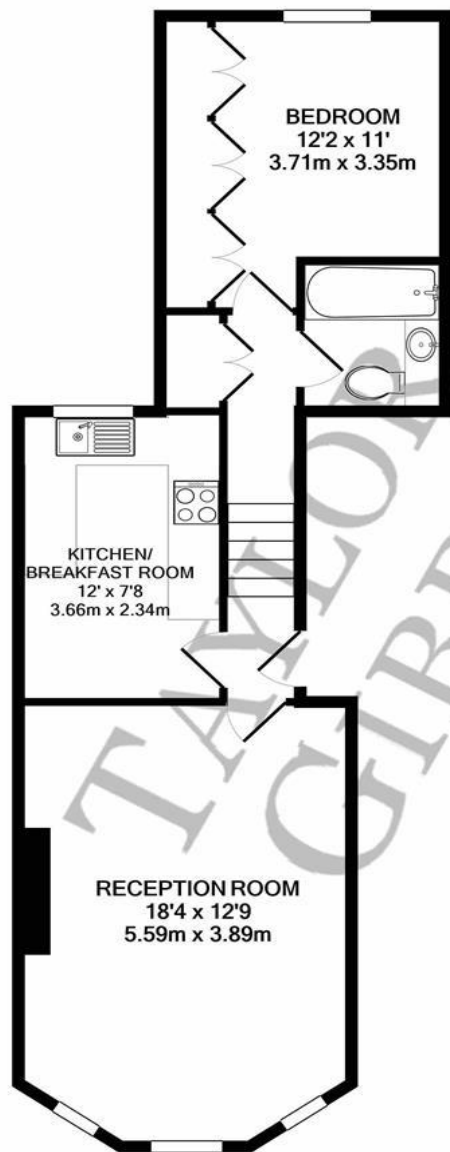
Please note that £2,150 per calendar month is the equivalent of £496.15 per week

Council Tax: Haringey Band D

Tenancy Term: 12 months

Approx. Floor Area: 552 sqft (51.28 sqm)





RAISED GROUND FLOOR

MILTON AVENUE N6
 TOTAL APPROX. FLOOR AREA 552 SQ.FT. (51.3 SQ.M.)
 Measurements are approximate. Not to scale. Illustrative purposes only

Energy Efficiency Rating		Current	Potential
<i>Very energy efficient - lower running costs</i>			
(92 Plus) A			
(81-91) B			
(69-80) C			
(55-68) D		62	73
(39-54) E			
(21-38) F			
(1-20) G			
<i>Not energy efficient - higher running costs</i>			
England & Wales	EU Directive 2002/91/EC		



