



**TAYLOR GIBBS**

Residential Sales, Lettings & Management Agents

**Whitehall Park, London, N19**  
**Price £2,000 pcm - To Let**

An extremely spacious two bedroom top floor purpose built flat with far reaching views across central London situated within walking distance to Archway Underground Station. Flooded in natural light, the accommodation comprises a spacious south facing reception room, separate fitted kitchen with space for a breakfast table, two double bedrooms, bathroom and a storage cupboard housing the washing machine. The property is heated by gas central heating, CPZ street parking is available and it's conveniently located in Whitehall Park which is within walking distance to the amenities of both Highgate Village and Crouch End Broadway.

Please note that £2,000 per calendar month is the equivalent of £461.53p per week

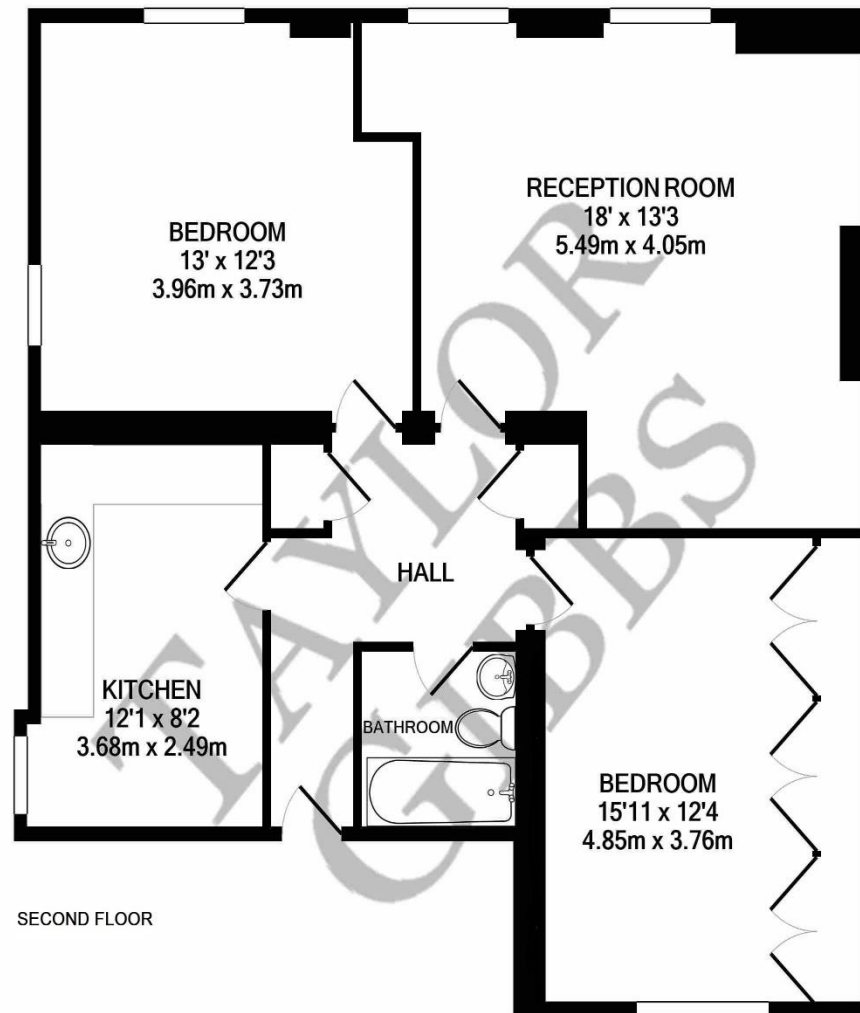
Council Tax: Islington Band E

Tenancy Term: 12 months

Approx. Floor Area: 829 sqft (77.02 sqm)







SECOND FLOOR

Energy Efficiency Rating		
	Current	Potential
Very energy efficient - lower running costs		
(92-100) <b>A</b>		
(81-91) <b>B</b>		
(69-80) <b>C</b>		78
(55-68) <b>D</b>	61	
(39-54) <b>E</b>		
(21-38) <b>F</b>		
(1-20) <b>G</b>		
Not energy efficient - higher running costs		
England & Wales	EU Directive 2002/91/EC	

WHITEHALL PARK N19  
TOTAL APPROX. FLOOR AREA 829 SQ.FT. (77.0 SQ.M.)  
Measurements are approximate. Not to scale. Illustrative purposes only



# TAYLOR GIBBS

Residential Sales, Lettings & Management Agents

33 Highgate High Street, Highgate, London, N6 5JT  
Tel: 020 8341 0123  
enquiries@taylorgibbs.co.uk  
www.taylorgibbs.co.uk



