



TAYLOR GIBBS

Residential Sales, Lettings & Management Agents

Bisham Gardens, Highgate
Price £1,650 pcm - To Let

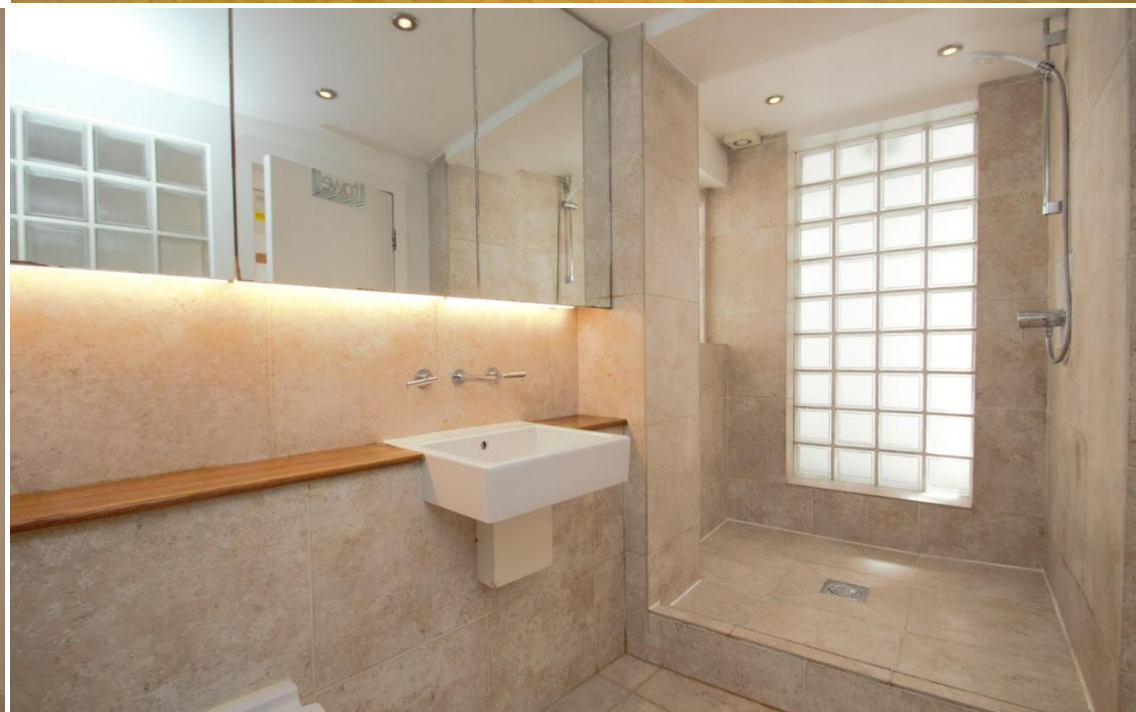
An extremely spacious studio apartment with a private south facing patio garden situated in the heart of Highgate Village. Accessed from a private entrance and boasting laminate wood flooring throughout, the accommodation comprises of a spacious studio room with a range of fitted wardrobes, modern fitted kitchen with integrated appliances and a wet room. The property is offered in very good condition throughout and is located only moments away from the restaurants, cafes and bars in Highgate Village and within walking distance to both Highgate and Archway Underground Stations.

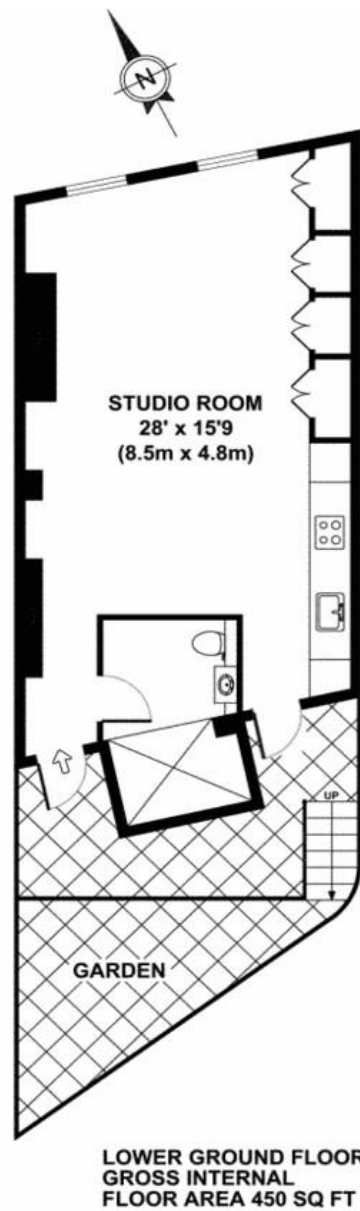
Please note that £1650 per calendar month is the equivalent of £380.76p per week

Council Tax: Camden Band C

Tenancy Term: 12 months

Approx. Floor Area: 450 sqft (41.81 sqm)





Energy Efficiency Rating		Current	Potential
<i>Very energy efficient - lower running costs</i>			
(92 Plus) A			
(81-91) B			
(69-80) C			
(55-68) D		71	79
(39-54) E			
(21-38) F			
(1-20) G			
<i>Not energy efficient - higher running costs</i>			
England & Wales		EU Directive 2002/91/EC	



