



TAYLOR GIBBS

Residential Sales, Lettings & Management Agents

Makepeace Avenue, Highgate, N6
Price £365 pw - To Let

A one bedroom apartment situated on the top floor of a purpose built block in the sought after Holly Lodge Estate. The accommodation comprises of a large reception room with wooden floors, a separate fully fitted kitchen, double bedroom with fitted wardrobes and a bathroom. Externally there are large, well maintained communal gardens and the open spaces of Hampstead Heath are just a short walk away. The property is serviced by gas central heating with fibre broadband available and CPZ street parking. It's ideally located just south of Highgate Village, with its wide array of shops, cafes and restaurants as well as Swains Lane at the bottom of Highgate West Hill.

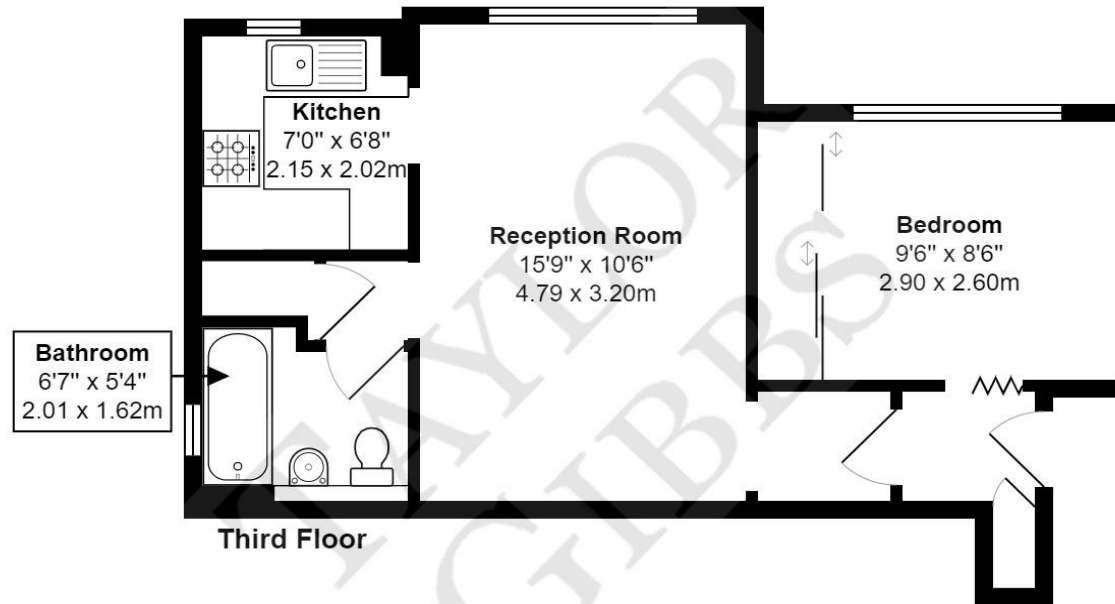
Council Tax: Camden Band C

Please note that £315 per week is equivalent to £1365 pcm.

Tenancy Term - 12 months.

Approx. Floor Area: 417 sqft (38.74 sqm)





Makepeace Mansions N6

Total Area: 417 ft² ... 38.7 m²

All measurements are approximate and for display purposes only

Energy Efficiency Rating		
	Current	Potential
Very energy efficient - lower running costs		
(92-100) A		
(81-91) B		
(69-80) C		75
(55-68) D		
(39-54) E	51	
(21-38) F		
(1-20) G		
Not energy efficient - higher running costs		
England & Wales	EU Directive 2002/91/EC	



TAYLOR GIBBS

Residential Sales, Lettings & Management Agents

33 Highgate High Street, Highgate, London, N6 5JT

Tel: 020 8341 0123

enquiries@taylorgibbs.co.uk

www.taylorgibbs.co.uk

