



TAYLOR GIBBS
Residential Sales, Lettings & Management Agents

Cholmeley Park, Highgate
Price £600 pw - To Let

A two bedroom, two bathroom ground floor apartment with wooden floors throughout situated only moments away from the heart of Highgate Village. Double glazed throughout, the accommodation comprises a large reception room with a feature fireplace, separate kitchen with space for a breakfast table, two double bedrooms, en-suite shower room to the primary bedroom and a bathroom with a separate WC. Further benefits include a large amount of storage space and externally there is a well maintained communal garden. The property benefits from gas central heating, fibre broadband is available on the street and there is CPZ street parking. It is ideally situated within close walking distance of Highgate Underground Station and only moments away from the picturesque surroundings of Waterlow Park.

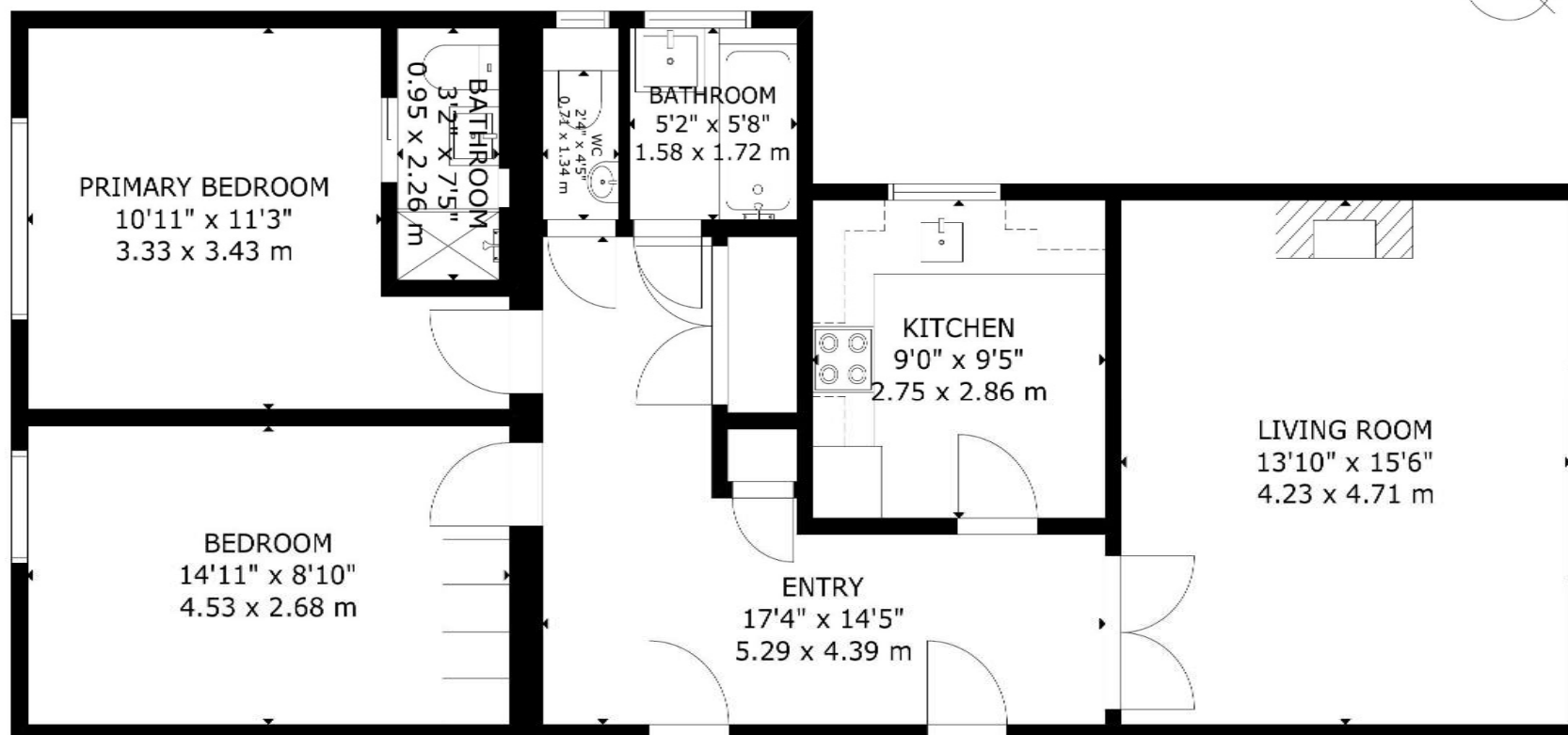
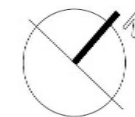
Please note that £600 per week is the equivalent of £2,600 per calendar month

Council Tax: Haringey Band E

Tenancy Term: 12 months or longer

Approx. Floor Area: 858 sqft (79.71 sqm)





Energy Efficiency Rating		
	Current	Potential
Very energy efficient - lower running costs		
(92-100) A		78
(81-91) B		
(69-80) C		
(55-68) D	67	
(39-54) E		
(21-38) F		
(1-20) G		
Not energy efficient - higher running costs		
England & Wales	EU Directive 2002/91/EC	

GROSS INTERNAL AREA
 TOTAL: 80 m²/858 sq.ft
 GROUND FLOOR: 80 m²/858 sq.ft
 SIZE AND DIMENSIONS ARE APPROXIMATE, ACTUAL MAY VARY



TAYLOR GIBBS

Residential Sales, Lettings & Management Agents

33 Highgate High Street, Highgate, London, N6 5JT

Tel: 020 8341 0123

enquiries@taylorgibbs.co.uk

www.taylorgibbs.co.uk

