



# TAYLOR GIBBS

Residential Sales, Lettings & Management Agents

Milton Road, Highgate, N6  
Price £425 pw - To Let



A spacious one bedroom apartment occupying the top floor of an Edwardian period conversion situated within close walking distance to Highgate Underground Station. Flooded with natural light, the accommodation comprises a spacious south-west facing reception room, large double bedroom, separate kitchen and a shower room/WC. The property has gas central heating, fibre broadband and there is street CPZ parking. It's conveniently situated within walking distance to the amenities of both Highgate Village and Crouch End Broadway and only moments away from the picturesque surroundings of Parkland Walk.

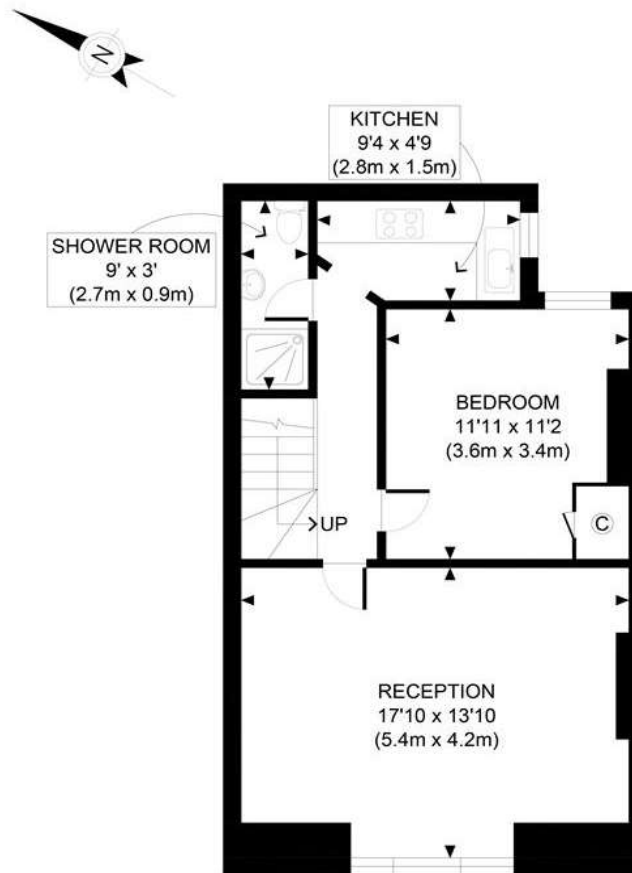
Please note that £425 per week is the equivalent of £1841.67 per calendar month

Council Tax: Haringey Band C

Tenancy Term: 12 months

Approx. Floor Area: 533 sqft (49.52 sqm)





GROSS INTERNAL  
FLOOR AREA 533 SQ FT

Energy Efficiency Rating		
	Current	Potential
Very energy efficient - lower running costs		
(92 Plus) <b>A</b>		
(81-91) <b>B</b>		
(69-80) <b>C</b>		
(55-68) <b>D</b>	60	64
(39-54) <b>E</b>		
(21-38) <b>F</b>		
(1-20) <b>G</b>		
Not energy efficient - higher running costs		
England & Wales	EU Directive 2002/91/EC	

APPROX. GROSS INTERNAL FLOOR AREA 533 SQ FT / 50 SQM

Ref:

Copyright **photoplan**

Disclaimer: Floor plan measurements are approximate and are for illustrative purposes only. While we do not doubt the floor plan accuracy and completeness, you or your advisors should conduct a careful, independent investigation of the property in respect of monetary valuation



# TAYLOR GIBBS

Residential Sales, Lettings & Management Agents

33 Highgate High Street, Highgate, London, N6 5JT

Tel: 020 8341 0123

enquiries@taylorgibbs.co.uk

www.taylorgibbs.co.uk

