



TAYLOR GIBBS

Residential Sales, Lettings & Management Agents

Milton Park, Highgate, N6  
Price £500 pw - To Let



A two bedroom apartment occupying the first floor of an Edwardian period conversion located in the popular Milton's area of Highgate within close walking distance to Highgate Underground Station. Flooded in natural light, the accommodation comprises a large reception room with bay window, separate fitted kitchen, two bedrooms and bathroom. The property is conveniently situated within walking distance to the amenities of both Highgate Village and Crouch End Broadway and backs on to Parkland walk.

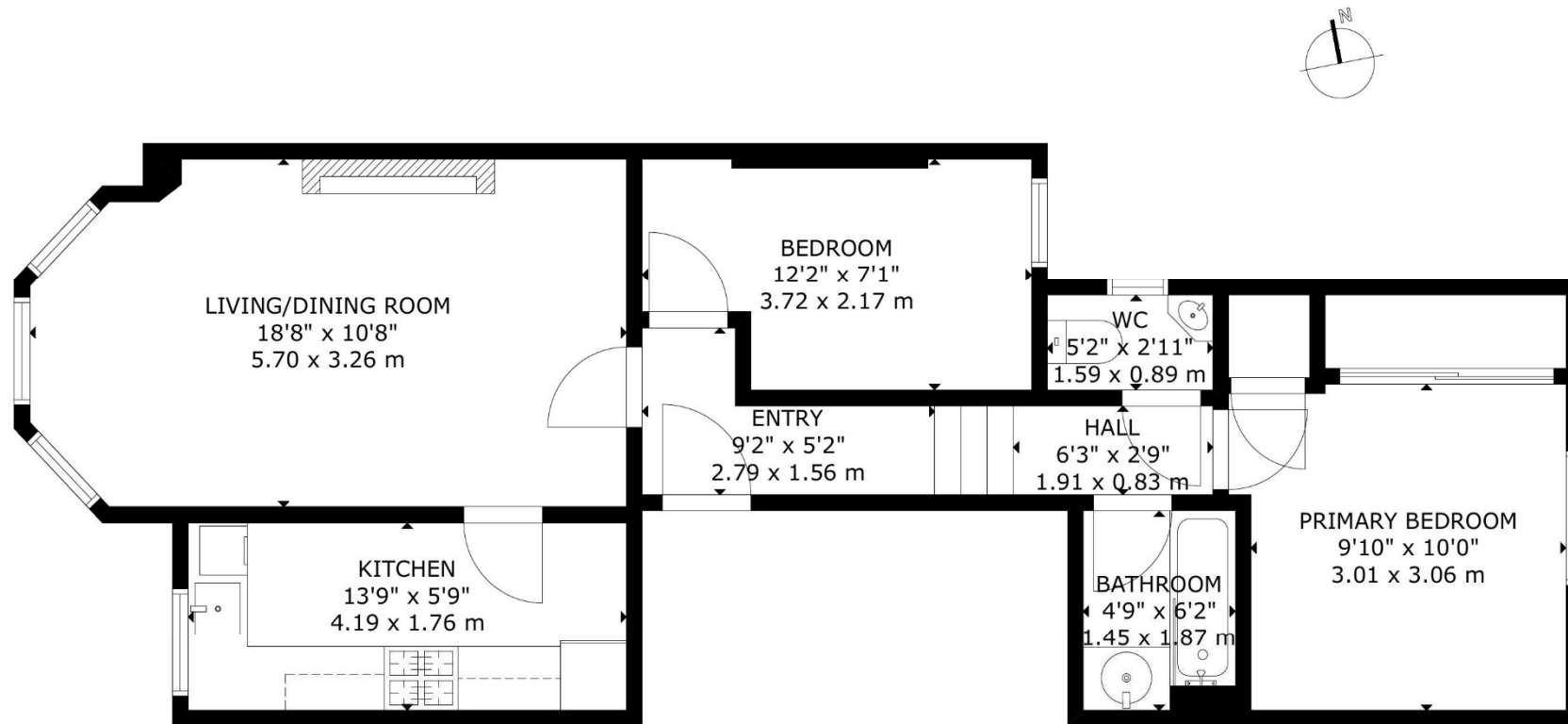
Please note that £500 per week is the equivalent of £2,166.67 per calendar month

Council Tax: Haringey Band D

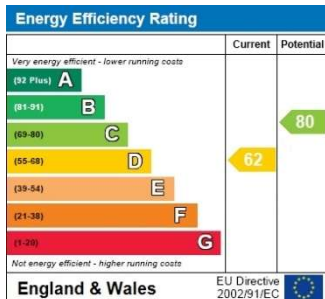
Tenancy Term: 12 months

Approx. Floor Area: 609 sqft (56.58 sqm)





GROSS INTERNAL AREA  
TOTAL: 57 m<sup>2</sup>/609 sq ft  
FIRST FLOOR: 57 m<sup>2</sup>/609 sq ft  
SIZE AND DIMENSIONS ARE APPROXIMATE, ACTUAL MAY VARY



# TAYLOR GIBBS

Residential Sales, Lettings & Management Agents

33 Highgate High Street, Highgate, London, N6 5JT

Tel: 020 8341 0123

enquiries@taylorgibbs.co.uk

www.taylorgibbs.co.uk



