



TAYLOR GIBBS

Residential Sales, Lettings & Management Agents

Milton Road, Highgate N6
Price £450,000 - Share of Freehold

A spacious one bedroom split level apartment occupying the raised ground floor of this period conversion within close walking distance of Highgate Underground Station. Boasting an array of period features throughout, the accommodation comprises of a large reception room, a separate kitchen, bathroom with a separate WC and a double bedroom with fitted wardrobes. The apartment is conveniently situated within walking distance to the amenities of both Highgate Village and Crouch End Broadway and only moments away from the picturesque surroundings of Parkland Walk.

Council Tax: London Borough of Haringey - Band D

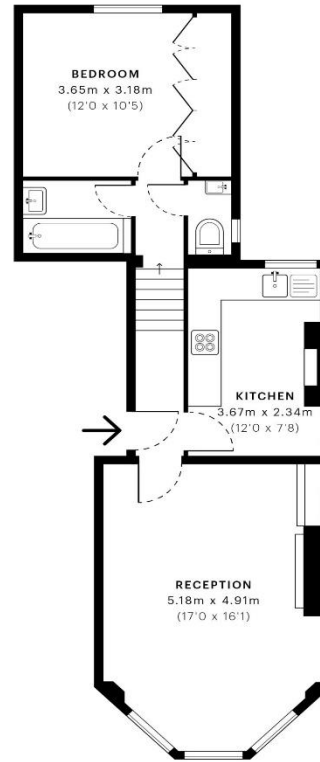
Approx. Floor Area: 533 sqft (49.52 sqm)

Remaining Lease Term: 89 years

Annual Service Charge: £600 - Payable Yearly

Annual Ground Rent: £0





— Ground Floor

Energy Efficiency Rating		Current	Potential
Very energy efficient - lower running costs			
(92-100) A			
(81-91) B			
(69-80) C			
(55-68) D		66	78
(39-54) E			
(21-38) F			
(1-20) G			
Not energy efficient - higher running costs			
England & Wales		EU Directive 2002/91/EC	

GROSS INTERNAL AREA (GIA)
The footprint of the property
49.58 sqm / 533.67 sqft

NET INTERNAL AREA (NIA)
Excludes walls and external features
includes washrooms, restricted head height
47.01 sqm / 506.01 sqft

EXTERNAL STRUCTURAL FEATURES
Balconies, terraces, verandas etc.
0.00 sqm / 0.00 sqft

RESTRICTED HEAD HEIGHT
Limited use area under 1.5 m
0.00 sqm / 0.00 sqft



Spec Verified floor plans are produced in accordance with Royal Institution of Chartered Surveyors' Property Measurement Standards. Plots and gardens are illustrative only and excluded from all area calculations. Due to rounding, numbers may not add up precisely. All measurements shown for the individual room lengths and widths are the maximum points of measurements captured in the scan.

IPMS 3B RESIDENTIAL 49.02 sqm / 527.65 sqft
IPMS 3C RESIDENTIAL 47.31 sqm / 509.24 sqft

spec id: 0144aa0a7070b20dcecd020e



