



TAYLOR GIBBS

Residential Sales, Lettings & Management Agents

Milton Road, Highgate, N6
Price £550 pw - To Let

A two bedroom apartment occupying the first floor of this Edwardian period conversion situated within close walking distance to Highgate Underground Station. Flooded in natural light, the accommodation comprises of a spacious reception room with bay window open plan to a modern kitchen, two double bedrooms, both with fitted wardrobes, luxurious bathroom and a separate WC. The property is conveniently located within walking distance to the amenities of both Highgate village and Crouch End Broadway and only moments away from the picturesque surroundings of Parkland Walk.

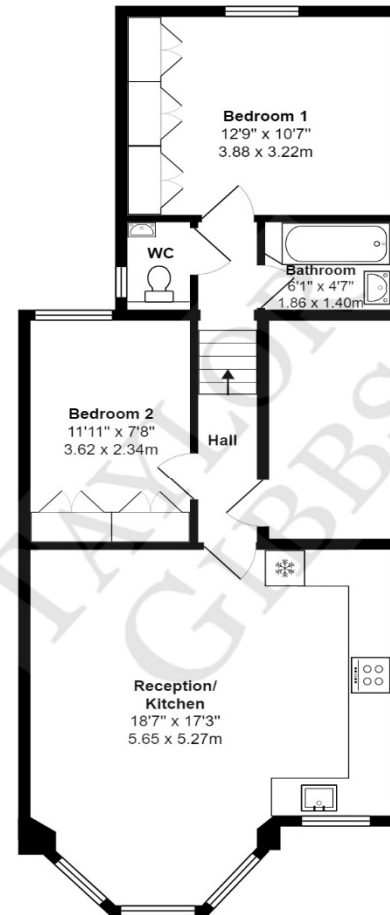
Please note that £550 per week is the equivalent of £2,383.33 per calendar month

Council Tax; Haringey Band D

Tenancy Term: 12 months

Approx. Floor Area: 614 sqft (57 sqm)





Milton Road N6

Total Area: 619 ft² ... 57.5 m²

All measurements are approximate and for display purposes only

Energy Efficiency Rating		
	Current	Potential
Very energy efficient - lower running costs		
(92-100) A		
(81-91) B		
(69-80) C		
(55-68) D		
(39-54) E		
(21-38) F		
(1-20) G		
Not energy efficient - higher running costs		
	70	80
England & Wales		
	EU Directive 2002/91/EC	



TAYLOR GIBBS

Residential Sales, Lettings & Management Agents

33 Highgate High Street, Highgate, London, N6 5JT

Tel: 020 8341 0123

enquiries@taylorgibbs.co.uk

www.taylorgibbs.co.uk

