



TAYLOR GIBBS

Residential Sales, Lettings & Management Agents

Northwood Road, Highgate, N6
Price £2,000 pcm - To Let

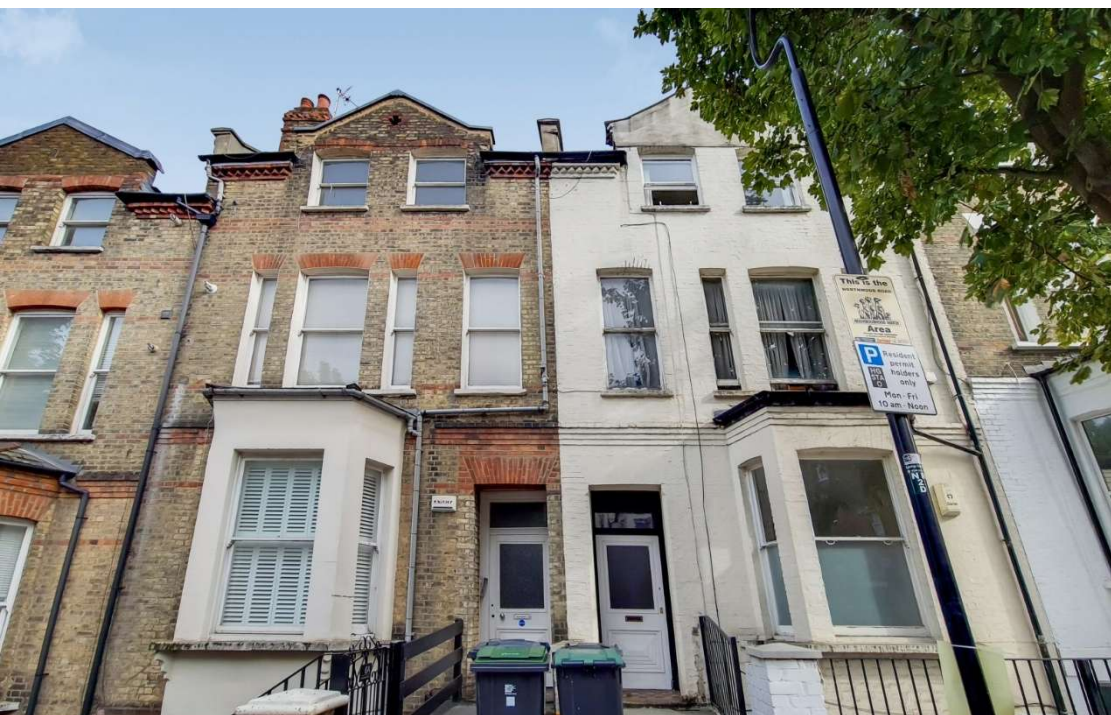
A stunning one bedroom apartment occupying the top floor of an Edwardian period conversion situated within close walking distance to Highgate Underground Station. Flooded in natural light, the accommodation comprises a spacious reception room which is open plan to a fitted kitchen, double bedroom with a fitted wardrobe and a bathroom. The property has gas central heating, fibre broadband and there is street CPZ parking available. It's conveniently located within walking distance to the amenities of both Highgate Village and Crouch End Broadway and only moments away from the leafy surroundings of Parkland Walk.

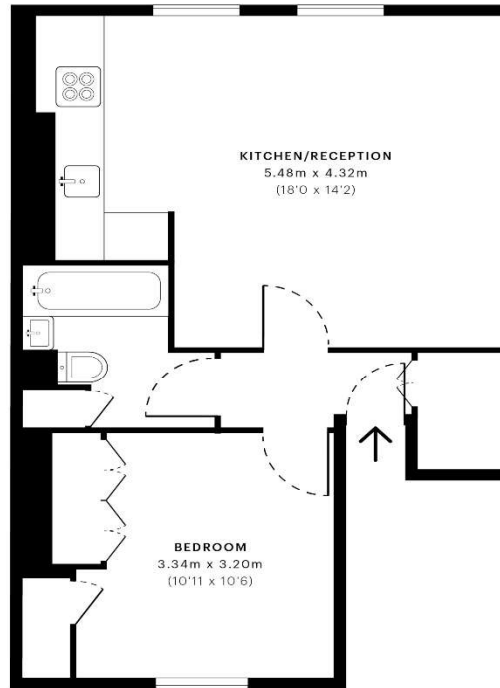
Please note that £2,000 per calendar month is the equivalent of £461.53 per week

Council Tax: Haringey Band C

Tenancy Term: 12 months

Approx. Floor Area: 447 sqft (41.53 sqm)





— Third Floor

Energy Efficiency Rating		
	Current	Potential
Very energy efficient - lower running costs		
(92-100) A		78
(81-91) B		
(69-80) C		
(55-68) D	62	
(39-54) E		
(21-38) F		
(1-20) G		
Not energy efficient - higher running costs		
England & Wales	EU Directive 2002/91/EC	

GROSS INTERNAL AREA (GIA)
The total area of the property
41.54 sqm / 447.13 sqft

NET INTERNAL AREA (NIA)
Excludes walls and other internal features
Includes mezzanine, covered porch and loggia
35.85 sqm / 388.05 sqft

EXTERNAL STRUCTURAL FEATURES
Balconies, terraces, roof-top etc.
0.00 sqm / 0.00 sqft

RESPECTED HEAD HEIGHT
Lowest internal room height 1.8m
0.00 sqm / 0.00 sqft



Spec Verified floor plans are produced in accordance with:
Royal Institution of Chartered Surveyors' Property Measurement Standards.
Plans are produced in accordance with the standards set out in the standards.
Due to rounding, numbers may not add up precisely.
All measurements shown for the individual rooms, lengths and widths
are the maximum values of measurements captured in the scan.

IPMS (B) MEASURED: 41.54 sqm / 447.13 sqft
IPMS (2C) GROSS INTERNAL: 42.07 sqm / 452.25 sqft

SPEC ID: 56315d3c6e0d4d4d0e37b942a8



