



TAYLOR GIBBS

Residential Sales, Lettings & Management Agents

Milton Road, Highgate, N6
Price £550,000 - Share of Freehold

A two bedroom split level apartment occupying the first floor of an Edwardian period conversion located in the popular Milton's area of Highgate and within close walking distance to both Highgate and Archway Underground Stations. Flooded with natural light and benefiting from an array of period features, the accommodation comprises of a spacious reception room, separate fitted kitchen, two double bedrooms and a bathroom. The property is conveniently located within walking distance to the multiple amenities of both Highgate Village and Crouch End Broadway whilst and only moments away from Parkland Walk.

Council Tax: London Borough of Haringey - Band D

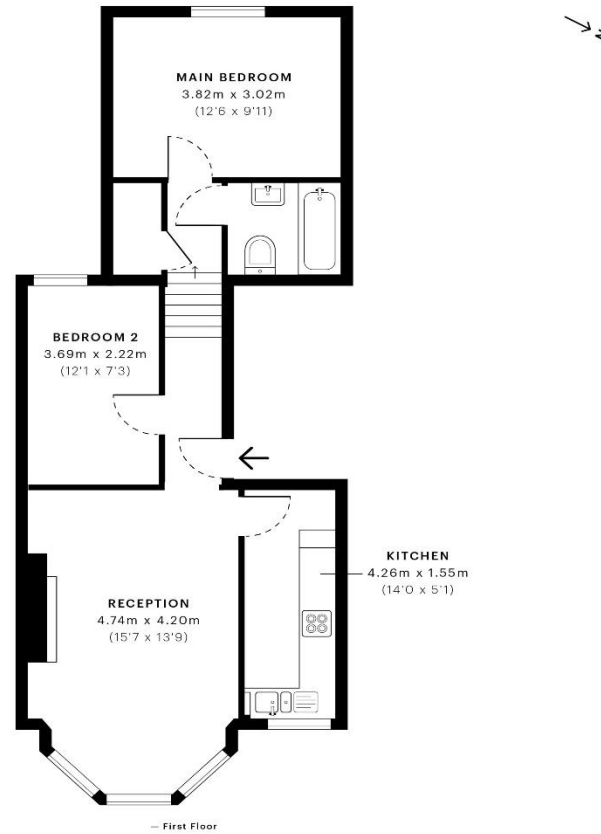
Approx. Floor Area: 605 sqft (56.21 sqm)

Remaining Lease Term: 958 years

Annual Service Charge: £0 – Ad Hoc, payable as and when required

Annual Ground Rent: £0





GROSS INTERNAL AREA (GIA)
The footprint of the property
56.22 sqm / 605.15 sqft

NET INTERNAL AREA (NIA)
Excludes walls and external features
53.64 sqm / 577.28 sqft

EXTERNAL STRUCTURAL FEATURES
Balconies, terraces, roof area etc.
0.00 sqm / 0.00 sqft

RECESSES (GIA) (GIA)
L-shaped area 4.00m x 1.5m
0.00 sqm / 0.00 sqft



SPEC Verified floor plans are produced in accordance with:
Royal Institution of Chartered Surveyors' Property Measurement standards.
Plans and graphics are illustrative only and excluded from all area calculations.
Due to rounding, numbers may not add up precisely.
All measurements shown for the individual room lengths and widths
are the maximum points of measurements captured in the scan.

(GIA) IS MEASURED: 56.22 sqm / 605.15 sqft
(NIA) IS MEASURED: 53.64 sqm / 577.28 sqft

SPEC ID: 56310954889d730a3204fb87



