



TAYLOR GIBBS

Residential Sales, Lettings & Management Agents

Elmshurst Crescent, East Finchley, N2
Price £2,250 pcm - To Let

A three bedroom apartment with a balcony located on the top/second floor of a purpose built block within close walking distance to East Finchley Underground Station. Boasting wooden floors throughout, the accommodation comprises a spacious reception room opening onto the balcony, separate fitted kitchen, three bedrooms and a bathroom. Further benefits include double glazed windows throughout and an abundance of storage space. The apartment is conveniently situated within walking distance to the multiple amenities on East Finchley High Street and the rustic surroundings of Cherry Tree Woods.

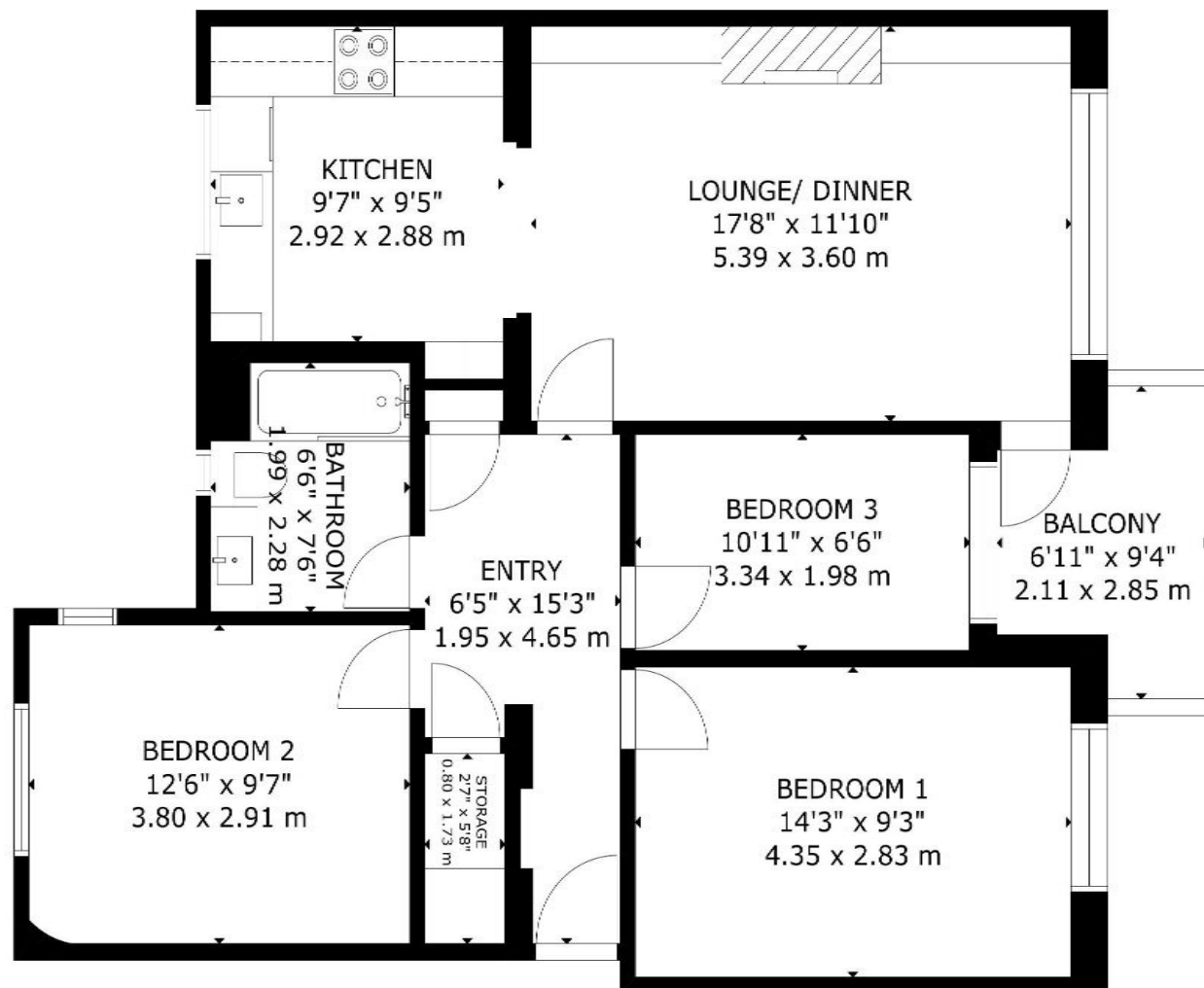
Please note that £2,250 per calendar month is the equivalent of £519.23p per week

Council Tax: Barnet Band C

Tenancy Term: 12 months

Approx. Floor Area: 821 sqft (76.27 sqm)





GROSS INTERNAL AREA
 TOTAL: 76 m²/821 sq ft
 SECOND FLOOR: 76 m²/821 sq ft
 EXCLUDED AREA: BALCONY: 5 m²/51 sq ft
 SIZE AND DIMENSIONS ARE APPROXIMATE, ACTUAL MAY VARY

SECOND FLOOR



TAYLOR GIBBS

Residential Sales, Lettings & Management Agents

33 Highgate High Street, Highgate, London, N6 5JT

Tel: 020 8341 0123

enquiries@taylorgibbs.co.uk

www.taylorgibbs.co.uk

