



TAYLOR GIBBS

Residential Sales, Lettings & Management Agents

Hazellville Road, Archway, N19
Price £400 pw - To Let

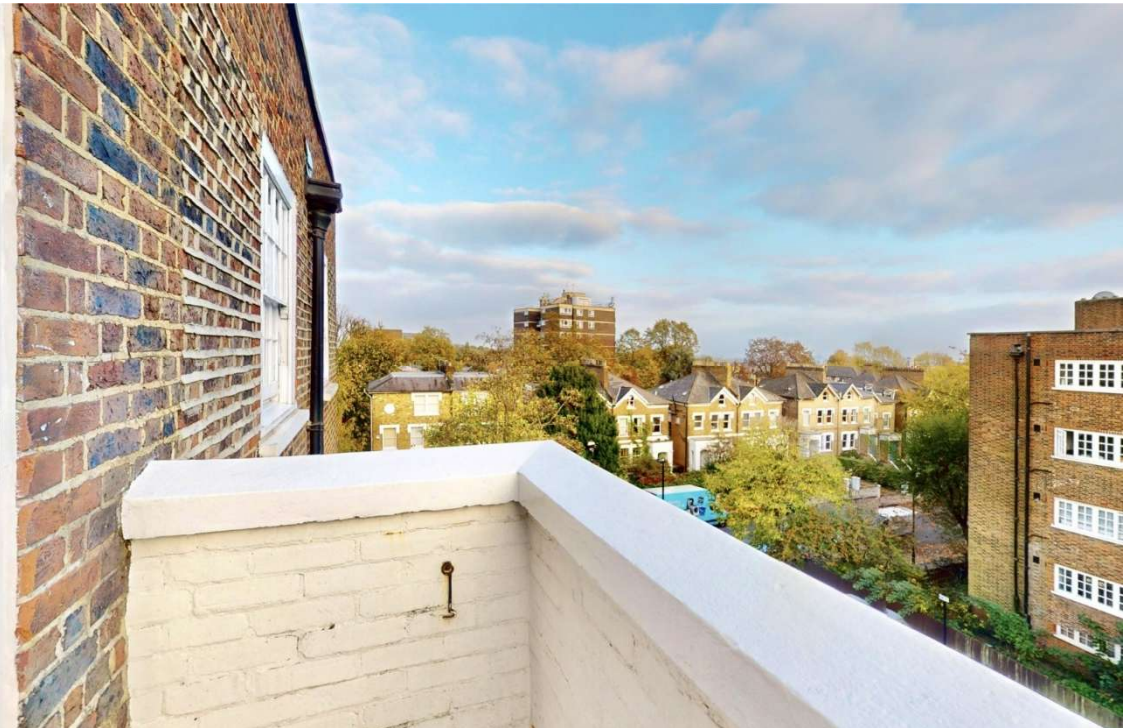
A one bedroom top floor, with lift access, purpose built apartment with a balcony situated within walking distance to Archway Underground Station. Flooded in natural light, the accommodation comprises a spacious reception room leading onto the balcony, separate modern kitchen, double bedroom and bathroom. The property is conveniently located within walking distance to the multiple amenities available on Crouch End Broadway and Highgate Village.

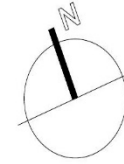
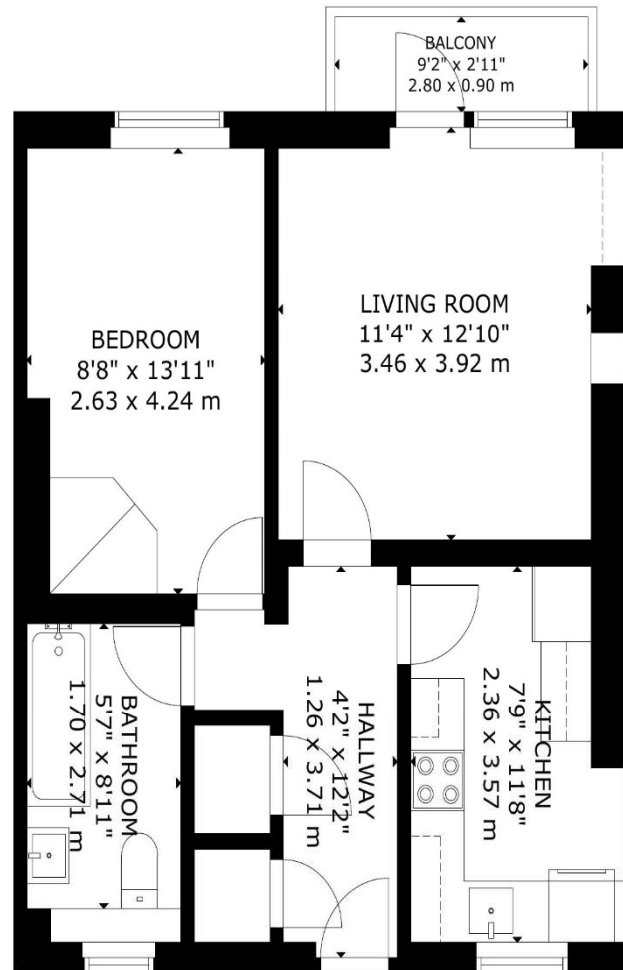
Please note that £400 per week is the equivalent of £1,733.33 per calendar month

Council Tax: Islington Band B

Tenancy Term: 12 months

Approx. Floor Area: 561 sqft (52.12 sqm)





Energy Efficiency Rating		
	Current	Potential
Very energy efficient - lower running costs		
(92-100) A		
(81-91) B		
(69-80) C		
(55-68) D		
(39-54) E		
(21-38) F		
(1-20) G		
Not energy efficient - higher running costs		
England & Wales	EU Directive 2002/91/EC	

FLOOR

GROSS INTERNAL AREA
TOTAL: 52 m²/561 sq.ft
GROUND FLOOR: 52 m²/561 sq.ft
EXCLUDED AREAS: BALCONY: 3 m²/27 sq.ft
SIZE AND DIMENSIONS ARE APPROXIMATE, ACTUAL MAY VARY



TAYLOR GIBBS

Residential Sales, Lettings & Management Agents

33 Highgate High Street, Highgate, London, N6 5JT

Tel: 020 8341 0123

enquiries@taylorgibbs.co.uk

www.taylorgibbs.co.uk

