



TAYLOR GIBBS

Residential Sales, Lettings & Management Agents

Southwood Lawn Road, Highgate, N6
Price £750 pw - To Let

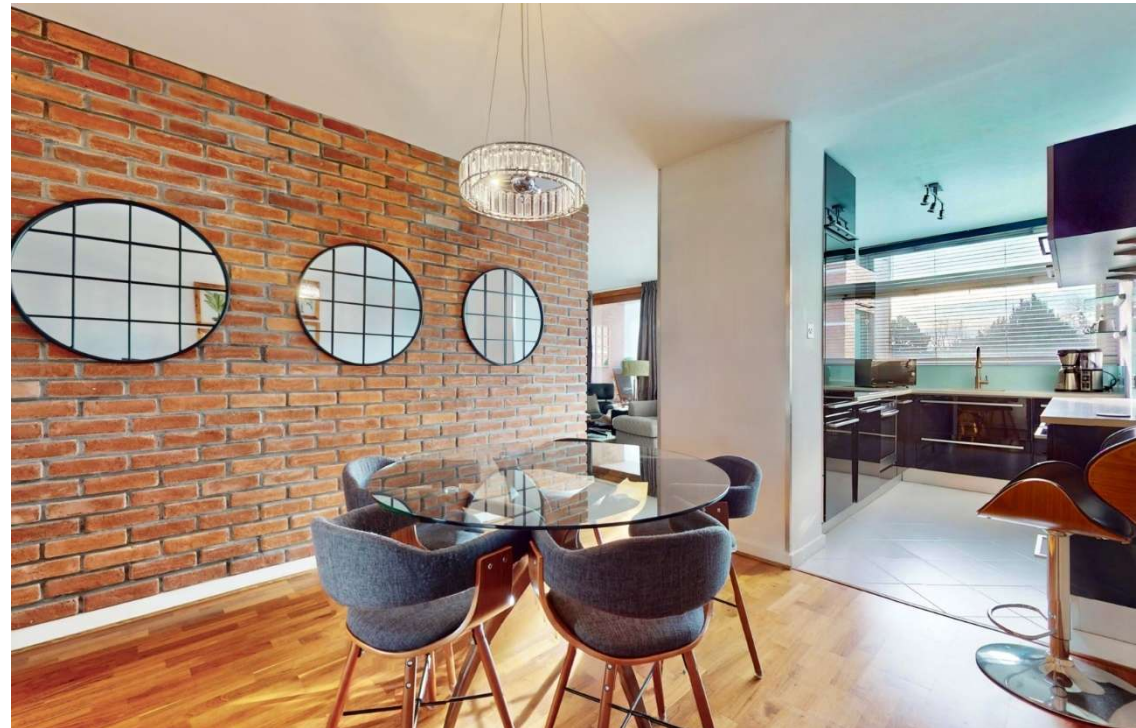
An extremely spacious and very well presented two bedroom, two bathroom, 3rd floor apartment with lift access, and a large south-west facing balcony in a prestigious development standing in extensive landscaped gardens between Highgate Village and Highgate Underground Station. Flooded in natural light, the accommodation comprises a large reception room opening onto the balcony, separate kitchen, dining room, two double bedrooms, a family bathroom and an en-suite shower room to the primary bedroom. Further benefits to the building include a lift, porter and video entry phone system. Externally there are large landscaped communal gardens, a swimming pool (a membership fee is payable), and visitors parking. The property has gas central heating, broadband is available and there is street CPZ parking between the hours of 10am - 12pm, Monday to Friday. The apartment is situated within close walking distance to the restaurants, cafes and bars in Highgate Village along with the picturesque surroundings of Waterlow Park.

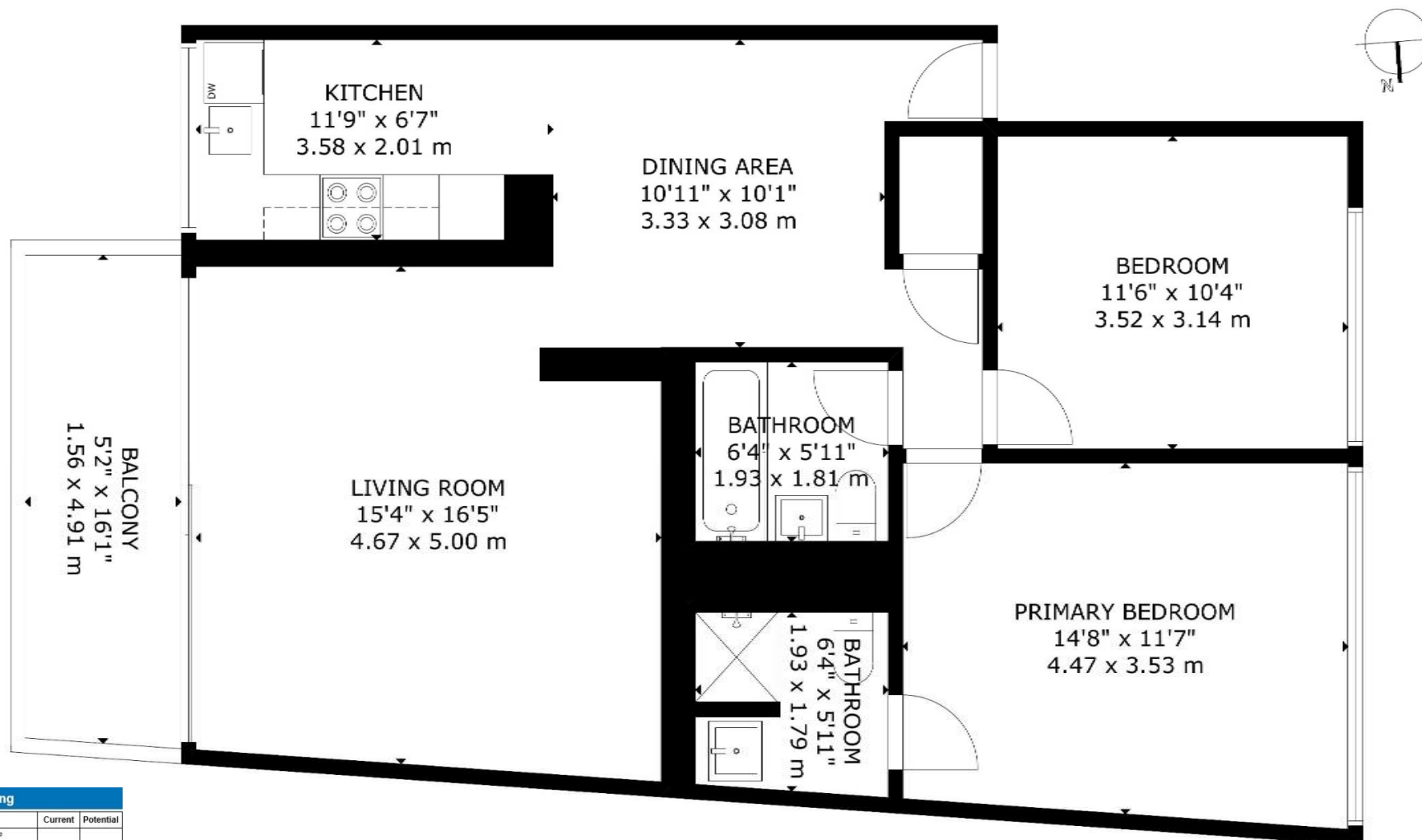
Please note that £750 per week is the equivalent of £3,250 per calendar month

Council Tax: Haringey Band E

Tenancy Term: 12 months

Approx. Floor Area: 900 sqft (83.61 sqm)





Energy Efficiency Rating		
	Current	Potential
Very energy efficient - lower running costs		
(92-100) A		83
(81-91) B		
(69-80) C	77	
(55-68) D		
(39-54) E		
(21-38) F		
(1-20) G		
Not energy efficient - higher running costs		
England & Wales	EU Directive 2002/91/EC	

GROSS INTERNAL AREA
TOTAL: 84 m²/900 sq.ft
GROUND FLOOR: 84 m²/900 sq.ft
EXCLUDED AREAS: BALCONY: 8 m²/83 sq.ft
SIZE AND DIMENSIONS ARE APPROXIMATE, ACTUAL MAY VARY



TAYLOR GIBBS

Residential Sales, Lettings & Management Agents

33 Highgate High Street, Highgate, London, N6 5JT

Tel: 020 8341 0123

enquiries@taylorgibbs.co.uk

www.taylorgibbs.co.uk

