



TAYLOR GIBBS

Residential Sales, Lettings & Management Agents

Anson Road, Tufnell Park, N7
Price £600 pw - To Let

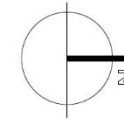
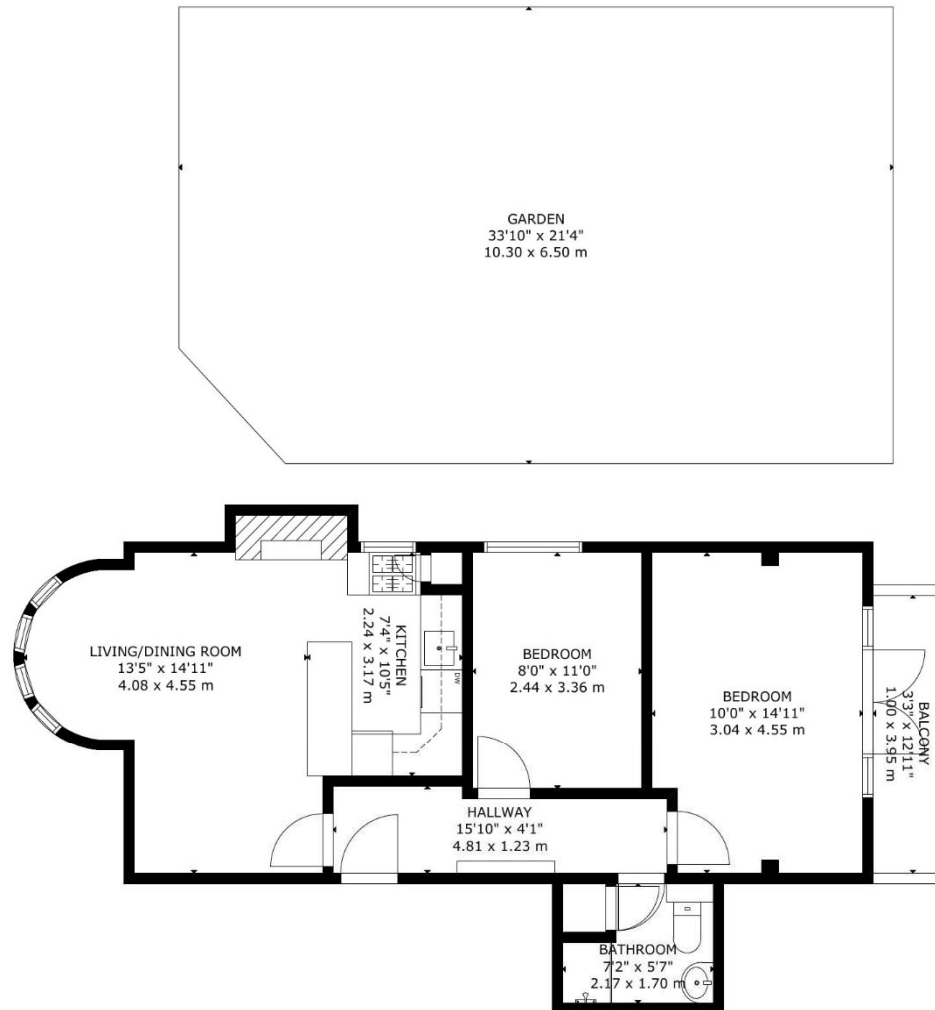
A two bedroom raised ground floor period conversion with direct access to a private garden situated within walking distance to Tufnell Park Underground Station. Boasting wooden floors throughout, the accommodation comprises a spacious reception room open plan to the kitchen, two bedrooms and a bathroom. Externally the property has a south facing private section of garden. The property has gas central heating, fibre broadband is available on the road and there is street CPZ parking with restrictions between 8:30 - 18:30. The property is conveniently located within walking distance to the amenities available in both Tufnell Park, Kentish Town and Caledonian Road.

Please note that £600 per week is the equivalent of £2,600 per calendar month

Tenancy Term: 12 months

Council Tax: Islington Band E





Energy Efficiency Rating		
	Current	Potential
Very energy efficient - lower running costs		
(92-100) A		
(81-91) B		
(69-80) C		
(55-68) D	71	79
(39-54) E		
(21-38) F		
(1-20) G		
Not energy efficient - higher running costs		
England & Wales	EU Directive 2002/91/EC	

GROSS INTERNAL AREA
TOTAL: 56 m²/602 sq.ft
GROUND FLOOR: 56 m²/602 sq.ft
EXCLUDED AREAS: GARDEN: 66 m²/707 sq.ft
SIZE AND DIMENSIONS ARE APPROXIMATE, ACTUAL MAY VARY



TAYLOR GIBBS

Residential Sales, Lettings & Management Agents

33 Highgate High Street, Highgate, London, N6 5JT

Tel: 020 8341 0123

enquiries@taylorgibbs.co.uk

www.taylorgibbs.co.uk

