



**TAYLOR GIBBS**

Residential Sales, Lettings & Management Agents

**Byron Mews, Hampstead, NW3**  
**Price £1,450 pw - To Let**



A four bedroom house with two bathrooms, private garden and designated parking space located in a gated development within walking distance to the array of amenities in both South End Green and Belsize Park. Arranged over three floors, the accommodation comprises a reception room, separate kitchen, four bedrooms, family bathroom, guest WC and en-suite bathroom to the primary bedroom. Externally the property has private front and rear gardens. The property is conveniently located within close walking distance to both Belsize Park Underground Station and Hampstead Heath Overground Station.

#### Material Information:

The property has gas central heating and broadband. The building is serviced by electricity, mains water and sewerage and mobile phone coverage is available. There is one designated parking space for the house.

Please note that £1,450 per week is the equivalent of £6,283.33 per week

Deposit: £8,700 (6 weeks rent)

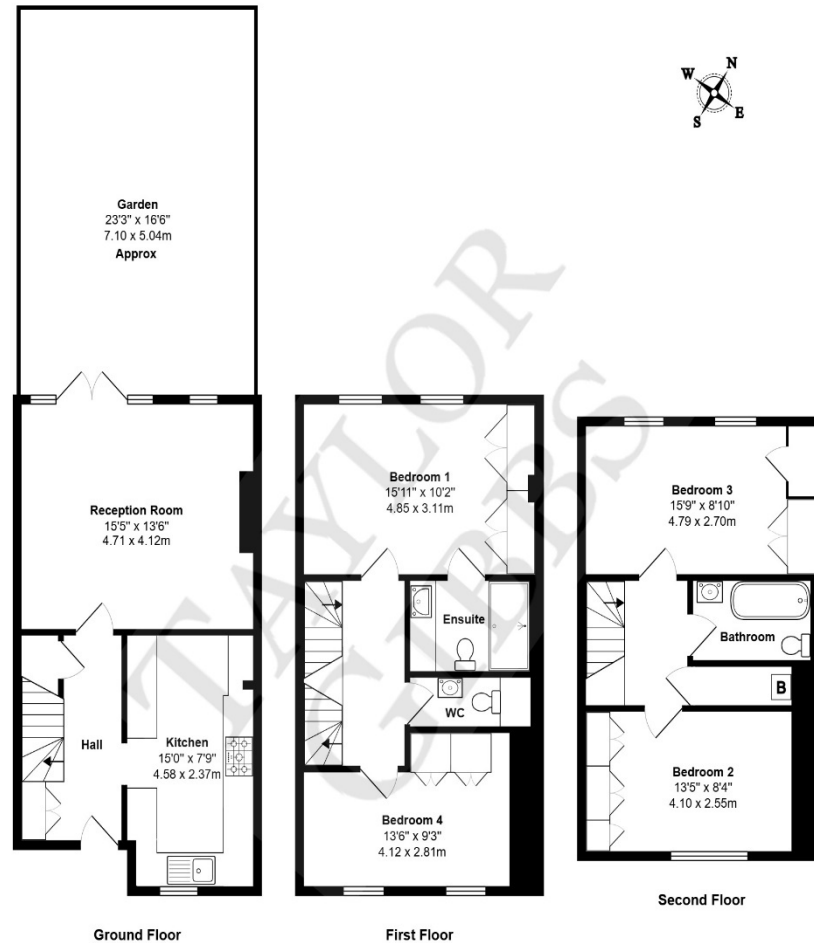
Council Tax: Camden Band G

Tenancy Term: 12 months or longer

Approx. Floor Area: 1220 sqft (113.34 sqm)







Energy Efficiency Rating		Current	Potential
Very energy efficient - lower running costs			
(92-100) <b>A</b>			86
(81-91) <b>B</b>			
(69-80) <b>C</b>		75	
(55-68) <b>D</b>			
(39-54) <b>E</b>			
(21-38) <b>F</b>			
(1-20) <b>G</b>			
Not energy efficient - higher running costs			
England & Wales		EU Directive 2002/91/EC	

**Byron Mews NW3**  
Total Area: 1220 ft<sup>2</sup> ... 113.3 m<sup>2</sup>  
All measurements are approximate and for display purposes only



# TAYLOR GIBBS

Residential Sales, Lettings & Management Agents

33 Highgate High Street, Highgate, London, N6 5JT  
Tel: 020 8341 0123  
enquiries@taylorgibbs.co.uk  
www.taylorgibbs.co.uk