



**37 Hartshill, Putnoe,
Bedford MK41 9AL**

**Taylor
Brightwell**



An excellent opportunity to purchase this spacious, three bedroom link detached bungalow with a south east facing rear garden in need of modernisation whilst providing great scope to enlarge and improve. It is ideally located in the heart of Putnoe and offered for sale with no upward chain.

The well proportioned accommodation includes a good sized entrance hall with an internal door to the garage and to the very spacious and welcoming reception hall. This leads to two nicely sized bedrooms and the large inner hallway providing access to the third bedroom/study, a three piece bathroom, a cloakroom, the fitted kitchen and the lovely, bright and airy sitting room with wide sliding doors to the rear garden. An enclosed side passageway provides a storage area and secure access to both the front and rear gardens.

The rear garden measures 61 ft deep x 39 ft wide backing on to playing fields and is laid to lawn with mature borders and a raised patio area. The front garden is enclosed and has flower beds plus a driveway providing off road parking leading to the integral garage and pedestrian side access to the rear.

Situated in a highly regarded and sought after location this is a great project for anyone looking to either simply refurbish and update or to extend, redesign and reconfigure as required. Viewing is highly recommended.

- * **3 Bedrooms**
- * **Light & Airy Sitting Room**
- * **Gas to Radiator Heating**
- * **Double Glazed**
- * **Integral Garage**
- * **South East Facing Rear Garden**
- * **Scope To Extend/Remodel STPP**
- * **Sought After Location**
- * **No Upward Chain**
- * **Viewing Highly Recommended**

FREEHOLD

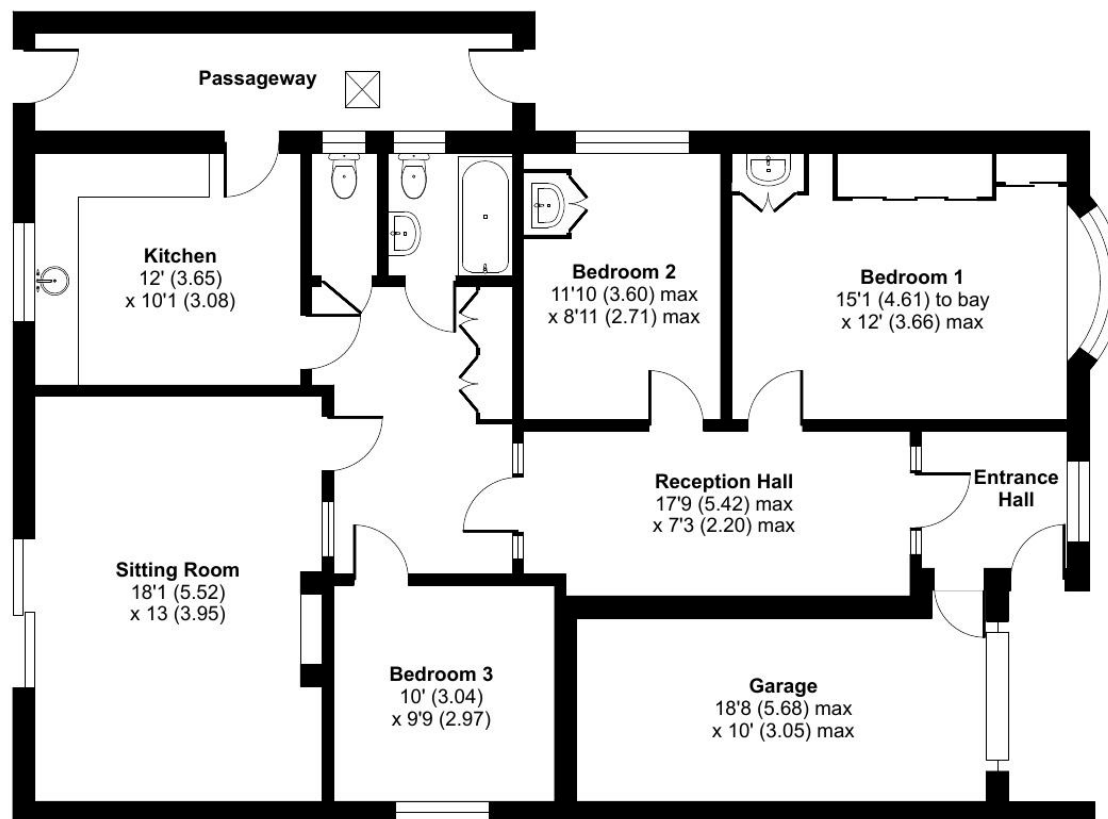


"Hassett House", Hassett Street, Bedford MK40 1HA

www.taylorbrightwell.co.uk property@taylorbrightwell.co.uk

01234 326444

Money Laundering Regulations: Intending purchasers will be asked to produce identification documentation and we would ask for co-operation in order that there is no delay in agreeing a sale. Agents Notes: The agent has not tested any apparatus, equipment, fixtures & fittings or services and so cannot verify that they are in working order or fit for the purpose. A buyer is advised to obtain verification from their solicitor or surveyor. All photographs shown are for illustration purposes only and may depict items that are not for sale or included in the sale of the property. Please note that we have not checked the situation with regards to planning consents, building regulation consents and any other relevant consents relating to this property and therefore, any interested purchaser should carry out their own enquiries with the appropriate authorities. All measurements are approximate and for guidance only. The particulars do not form part of any contract and all properties are offered subject to contract. Neither Taylor Brightwell nor any of its employees or agents has any authority to make or give any representation or warranty whatsoever in relation to this property.



GROUND FLOOR

Approximate Area = 1143 sq ft / 106.1 sq m (excludes passageway)

Garage = 156 sq ft / 14.4 sq m

Total = 1299 sq ft / 120.5 sq m

For identification only - Not to scale



Floor plan produced in accordance with RICS Property Measurement 2nd Edition, Incorporating International Property Measurement Standards (IPMS2 Residential). © nñchecom 2026. Produced for Taylor Brightwell. REF: 1417573