



**8 Cox's Close, Sharnbrook
Bedfordshire MK44 1JU**

**Taylor
Brightwell**



An excellent opportunity to purchase this spacious, two bedroom semi-detached bungalow situated in a quiet close of similar styled homes within the highly desirable north Bedfordshire village of Sharnbrook.

The well planned accommodation includes the two double bedrooms, formerly 3 bedrooms which could be reinstated or an ensuite created, a good sized extended lounge/diner, a fitted kitchen with a comprehensive range of units and a refitted shower room.

Externally there is an open plan front garden with a lawn and a block paved driveway providing off road parking plus gated side access to the rear. The rear garden measures 63 ft x 32 ft and is very private with a lawn and established borders.

The property also benefits from gas radiator heating and double glazing and is being offered for sale with no upward chain.

- * **2 Double Bedrooms**
- * **Fitted Kitchen**
- * **Spacious Lounge/Diner**
- * **Refitted Shower Room**
- * **Gas to Radiator Heating**
- * **Double Glazed**
- * **63 Ft x 32 Ft Rear Garden**
- * **Block Paved Driveway**
- * **No Upward Chain**
- * **Sought After Village Location**



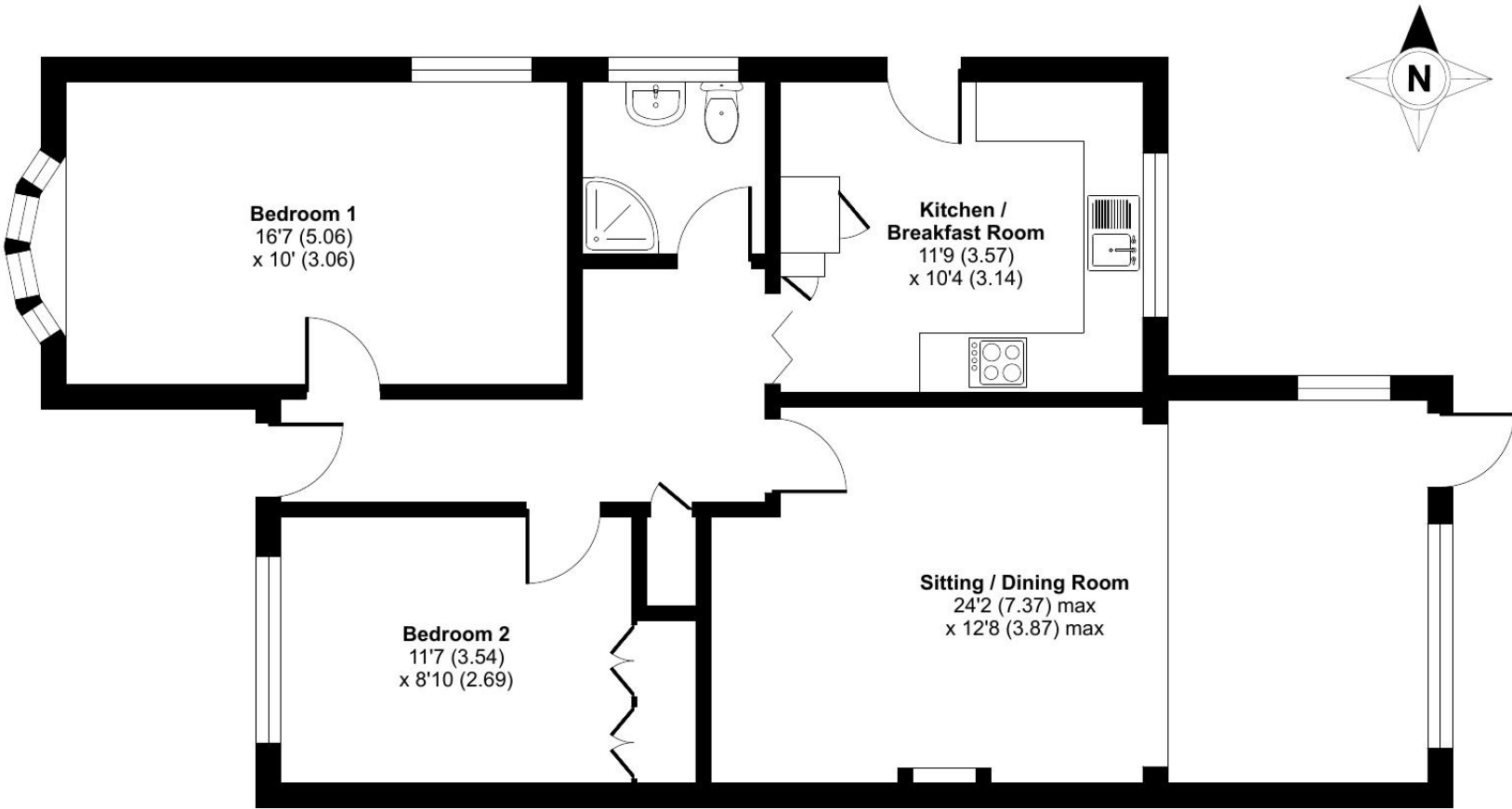
FREEHOLD

"Hassett House", Hassett Street, Bedford MK40 1HA

www.taylorbrightwell.co.uk property@taylorbrightwell.co.uk

01234 326444

Money Laundering Regulations: Intending purchasers will be asked to produce identification documentation and we would ask for co-operation in order that there is no delay in agreeing a sale. Agents Notes: The agent has not tested any apparatus, equipment, fixtures & fittings or services and so cannot verify that they are in working order or fit for the purpose. A buyer is advised to obtain verification from their solicitor or surveyor. All photographs shown are for illustration purposes only and may depict items that are not for sale or included in the sale of the property. Please note that we have not checked the situation with regards to planning consents, building regulation consents and any other relevant consents relating to this property and therefore, any interested purchaser should carry out their own enquiries with the appropriate authorities. All measurements are approximate and for guidance only. The particulars do not form part of any contract and all properties are offered subject to contract. Neither Taylor Brightwell nor any of its employees or agents has any authority to make or give any representation or warranty whatsoever in relation to this property.



GROUND FLOOR



Approximate Area = 861 sq ft / 79.9 sq m
For identification only - Not to scale



Floor plan produced in accordance with RICS Property Measurement 2nd Edition, Incorporating International Property Measurement Standards (IPMS2 Residential). © nichecom 2025. Produced for Taylor Brightwell. REF: 1333403