



**41, Dragonfly Crescent,  
Biddenham MK40 4UB**

**Taylor  
Brightwell**





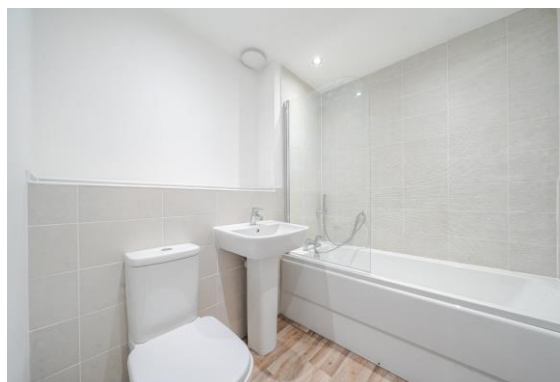
A well maintained and spacious three/four bedroom townhouse conveniently situated in a quiet location within this popular and attractive development in Biddenham providing easy access to major road links, the town centre and mainline railway station. No upward chain.

On the ground floor the property has a good sized entrance hall, a cloakroom/utility room with an integrated washing machine and an open plan kitchen/dining/sitting room which has double doors to the rear garden plus a comprehensive range of stylish units with integrated appliances. The first floor includes the spacious lounge/bedroom two with a Juliet balcony, the three piece family bathroom and the fourth bedroom. The top floor features the impressive main bedroom suite with built in wardrobes and an ensuite shower room and a further double bedroom completes the versatile accommodation.

Externally there is a 33 ft x 22 ft rear garden laid to lawn with a large shed and pedestrian gated side access to the front where there are two allocated off road parking spaces.

- \* **3/4 Bedrooms**
- \* **Versatile Accommodation**
- \* **Open Plan Kitchen/Dining Room**
- \* **Integrated Appliances**
- \* **Double Glazing**
- \* **Gas Radiator Heating**
- \* **Ensuite**
- \* **2 Allocated Parking Spaces**
- \* **No Upward Chain**

**FREEHOLD**

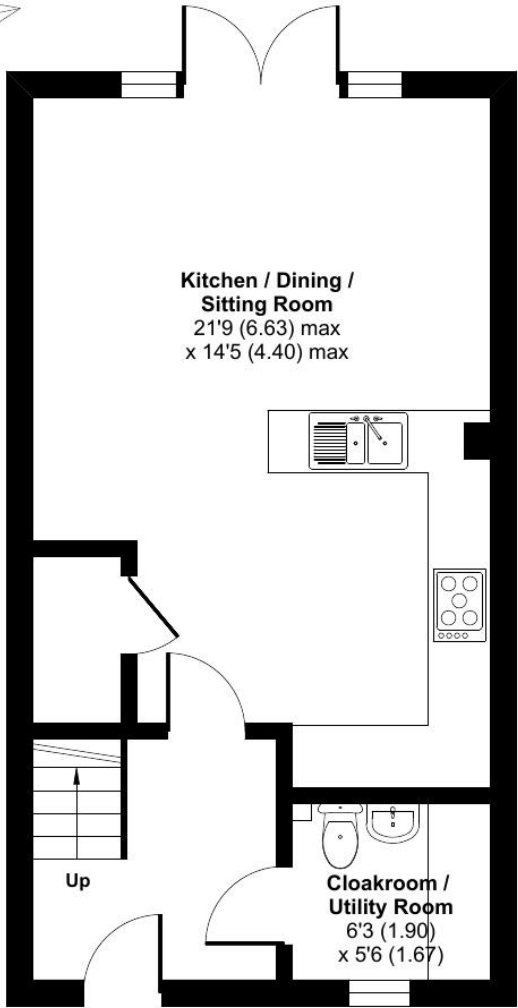


"Hassett House", Hassett Street, Bedford MK40 1HA

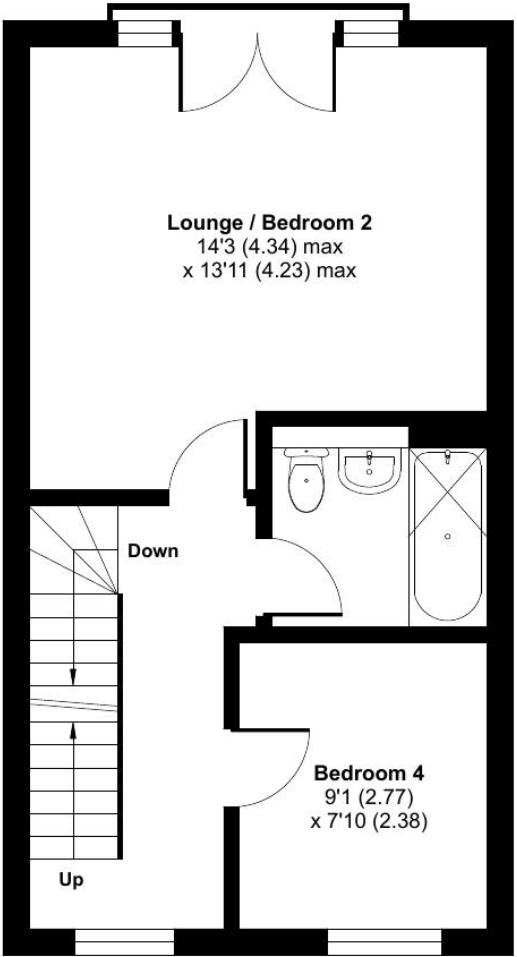
[www.taylorbrightwell.co.uk](http://www.taylorbrightwell.co.uk)    [property@taylorbrightwell.co.uk](mailto:property@taylorbrightwell.co.uk)

**01234 326444**

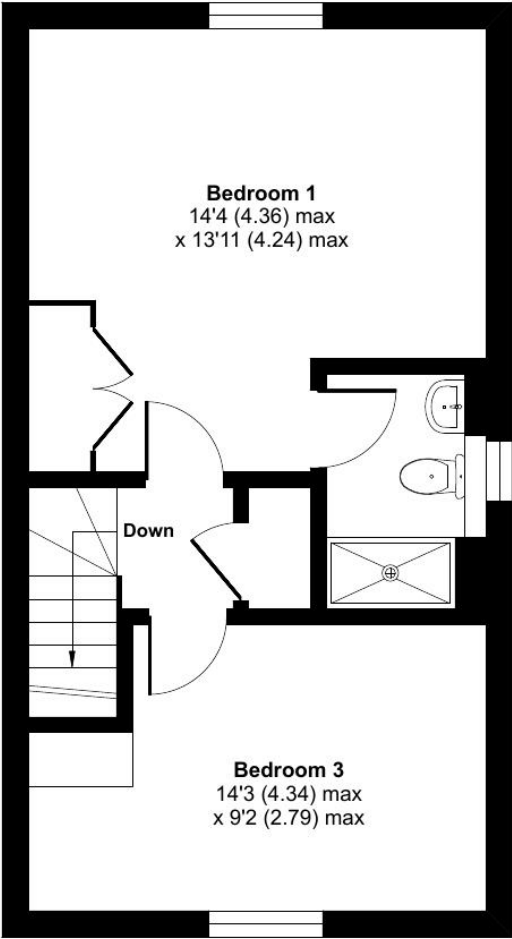
Money Laundering Regulations: Intending purchasers will be asked to produce identification documentation and we would ask for co-operation in order that there is no delay in agreeing a sale. Agents Notes: The agent has not tested any apparatus, equipment, fixtures & fittings or services and so cannot verify that they are in working order or fit for the purpose. A buyer is advised to obtain verification from their solicitor or surveyor. All photographs shown are for illustration purposes only and may depict items that are not for sale or included in the sale of the property. Please note that we have not checked the situation with regards to planning consents, building regulation consents and any other relevant consents relating to this property and therefore, any interested purchaser should carry out their own enquiries with the appropriate authorities. All measurements are approximate and for guidance only. The particulars do not form part of any contract and all properties are offered subject to contract. Neither Taylor Brightwell nor any of its employees or agents has any authority to make or give any representation or warranty whatsoever in relation to this property.



GROUND FLOOR



FIRST FLOOR



SECOND FLOOR



Approximate Area = 1203 sq ft / 111.7 sq m

For identification only - Not to scale



Floor plan produced in accordance with RICS Property Measurement 2nd Edition, Incorporating International Property Measurement Standards (IPMS2 Residential). © nichecom 2025. Produced for Taylor Brightwell. REF: 1341888