



**41 Portland Close, Goldington,
Bedford, MK41 9NF**

**Taylor
Brightwell**



A fully modernised and refurbished two bedroom detached bungalow immaculately presented and set back from the road within a quiet close in the much sought after Goldington area. It is ideally located approximately two miles from the town centre and well served by a wide range of local amenities.

The centrepiece of this superb home is the impressive kitchen/dining/family room, refitted with a stylish range of units complemented by contrasting work tops, a central island, and a range of integrated appliances. This space is enhanced by bi-folding doors opening onto the rear garden, quality herringbone tiled flooring, inset ceiling spotlights, and underfloor heating plus internal access to the garage.

The generously sized inner hall features useful built in storage, loft access, and doors leading to the utility room and the sitting room, which in turn flows through to the spacious garden room. The main bedroom benefits from luxury fitted wardrobes and a well appointed, refitted ensuite. The guest bedroom also includes fitted wardrobes, and the accommodation is completed by a beautifully presented four piece family bathroom.

Externally, the well maintained rear garden extends to approximately 59 ft in width, offering a high degree of privacy. It has a lawn with well stocked borders leading to an impressive 30 ft x 26 ft patio area that enjoys a sunny southerly aspect. A further side garden, measuring approximately 37 ft x 15 ft, is paved and provides gated pedestrian access to the front. This area offers excellent potential for further extension, subject to the necessary planning permissions (STPP).

To the front, a walled garden is laid to lawn, alongside a large block-paved driveway providing ample off-road parking and access to the single garage.



- * 2 Double Bedrooms
- * Impressive Kitchen/Dining/Family Room
- * Utility Room
- * Spacious Sitting Room
- * Refitted Ensuite & Family Bathroom
- * Gas Radiator Heating
- * Double Glazing
- * Spacious Garden Room
- * Private South Facing Garden
- * Large Driveway Plus A Garage

FREEHOLD

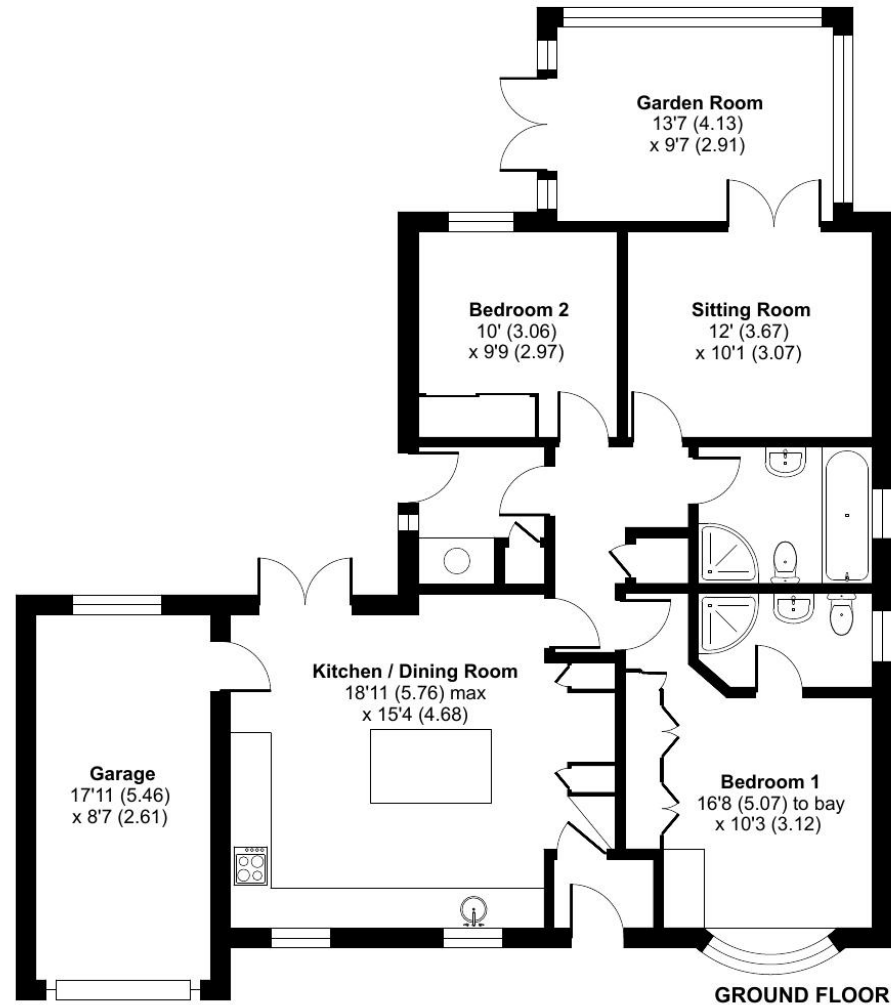


“Hassett House”, Hassett Street, Bedford MK40 1HA

www.taylorbrightwell.co.uk property@taylorbrightwell.co.uk

01234 326444

Money Laundering Regulations: Intending purchasers will be asked to produce identification documentation and we would ask for co-operation in order that there is no delay in agreeing a sale. Agents Notes: The agent has not tested any apparatus, equipment, fixtures & fittings or services and so cannot verify that they are in working order or fit for the purpose. A buyer is advised to obtain verification from their solicitor or surveyor. All photographs shown are for illustration purposes only and may depict items that are not for sale or included in the sale of the property. Please note that we have not checked the situation with regards to planning consents, building regulation consents and any other relevant consents relating to this property and therefore, any interested purchaser should carry out their own enquiries with the appropriate authorities. All measurements are approximate and for guidance only. The particulars do not form part of any contract and all properties are offered subject to contract. Neither Taylor Brightwell nor any of its employees or agents has any authority to make or give any representation or warranty whatsoever in relation to this property.



Approximate Area = 1046 sq ft / 97.1 sq m

Garage = 153 sq ft / 14.2 sq m

Total = 1199 sq ft / 111.3 sq m

For identification only - Not to scale



Floor plan produced in accordance with RICS Property Measurement 2nd Edition, Incorporating International Property Measurement Standards (IPMS2 Residential). © nichecom 2026. Produced for Taylor Brightwell. REF: 1471654

