



Block photograph

**120 Britannia House, Palgrave Road,  
Bedford MK42 9BX**

**Taylor  
Brightwell**

A bright and spacious two double bedroom apartment on the 5th floor of this purpose built block with a balcony and far reaching views conveniently located for access to the mainline railway station, town centre and major road links and is offered for sale with no upward chain making this an ideal first time buy or investment opportunity.

The well planned accommodation includes the large, L- shaped entrance hall with airing cupboard, a modern three piece bathroom, and the two double bedrooms with the main bedroom featuring a refitted ensuite shower room. The spacious, open plan lounge/kitchen/dining room has a good range of high gloss fronted units with integrated appliances including a dishwasher, a washer/dryer, a fridge/freezer and an oven, hob and extractor hood. Double doors open to the south facing balcony with space to sit and enjoy the far reaching views across the river, rooftops and countryside beyond.

Further benefits include a lift, electric heating, double glazing and a secure allocated parking space.

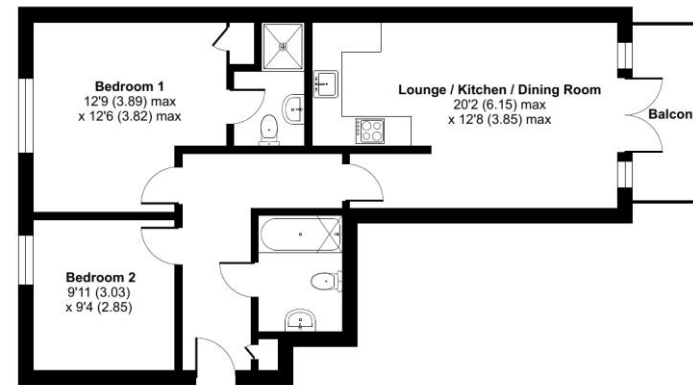
Viewing is highly recommended.

- \* 2 Double Bedrooms
- \* Refitted Ensuite Shower Room
- \* Open Plan Lounge/Kitchen/Dining Room
- \* South Facing Balcony
- \* Electric Heating
- \* Double Glazing
- \* Integrated Kitchen Appliances
- \* Lift to 5<sup>th</sup> Floor
- \* Secure Allocated Parking
- \* No upward chain

**LEASE:** We are informed by the vendor that the management charges including ground rent are approx. £2200 yearly and the remaining term of the lease is approx. 979 years.

It will be necessary for any prospective purchaser to clarify the accuracy of these details via their Solicitor/conveyancer in the usual way.

## Leasehold



FIRST FLOOR



Approximate Area = 683 sq ft / 63.4 sq m  
For identification only - Not to scale

ⓘ Floor plan produced in accordance with RICS Property Measurement 2nd Edition, Incorporating International Property Measurement Standards (IPMS2 Residential). © nichcom 2025. Produced for Taylor Brightwell. REF: 1447860



“Hassett House”, Hassett Street, Bedford MK40 1HA

www.taylorbrightwell.co.uk    property@taylorbrightwell.co.uk

01234 326444