



**“The Old Coach House” 22 Cardington Road,
Bedford, MK42 0BJ**

**Taylor
Brightwell**



A rarely available 19th Century former coach house and stables providing approximately 3000 sq ft of impressive and versatile family accommodation with annexe potential. Ideally located a short walk from the town centre, The Embankment and Castle Quarter, the Harpur Trust Schools and within easy reach of the mainline station.

This exceptionally spacious and character filled home boasts a wealth of unique features. It welcomes you with a generous reception hall, offering ample space for coats and boots, which leads to an inner hallway with stairs rising to the first floor and a ground floor shower room. The expansive sitting room features a log burner and provides access to a home office, as well as a side hall leading to an additional bedroom and shower room creating an ideal self contained annexe should it be required. At the heart of the home is the impressive kitchen/dining/family room, a vast and sociable space with direct access to the garden. It is fitted with an extensive range of contemporary units, complemented by granite worktops and a large walk in larder. There is ample room to accommodate both a substantial dining table and a central island if desired. A large and highly practical utility room completes the ground floor accommodation.

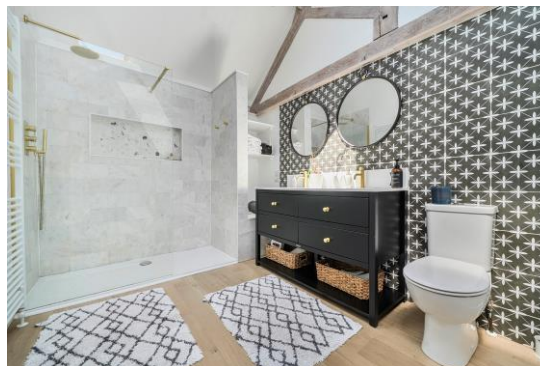
The first floor offers an impressive landing leading to well proportioned bedrooms, where exposed beams hint at the property's history. The substantial principal bedroom (25' x 14'9) boasts a vaulted ceiling and benefits from a recently refitted luxury ensuite. There are three further generously sized bedrooms, a refitted family bathroom, and a fifth bedroom/study.

Externally, the property is accessed via gates opening onto a gravel driveway, providing ample off road parking and leading to the garage and courtyard garden. The south facing courtyard, measuring approximately 41 ft x 29 ft, is designed for low maintenance with artificial lawn, offering a perfect space to relax and enjoy its sunny aspect.

This distinctive home presents a superb opportunity to acquire a large, refurbished character property in a highly desirable location close to The Embankment and town centre. Early internal viewing is highly recommended.

- * 19th Century Former Coach House & Stables
- * Versatile Accommodation
- * Character Features Throughout
- * Annex Potential
- * 5/6 Bedrooms, 4 Bathrooms
- * Gas Radiator Heating & Double Glazing
- * 36'1 x 14'10 Kitchen/Dining/Family Room
- * South Facing Courtyard Garden
- * Garage & Driveway

FREEHOLD

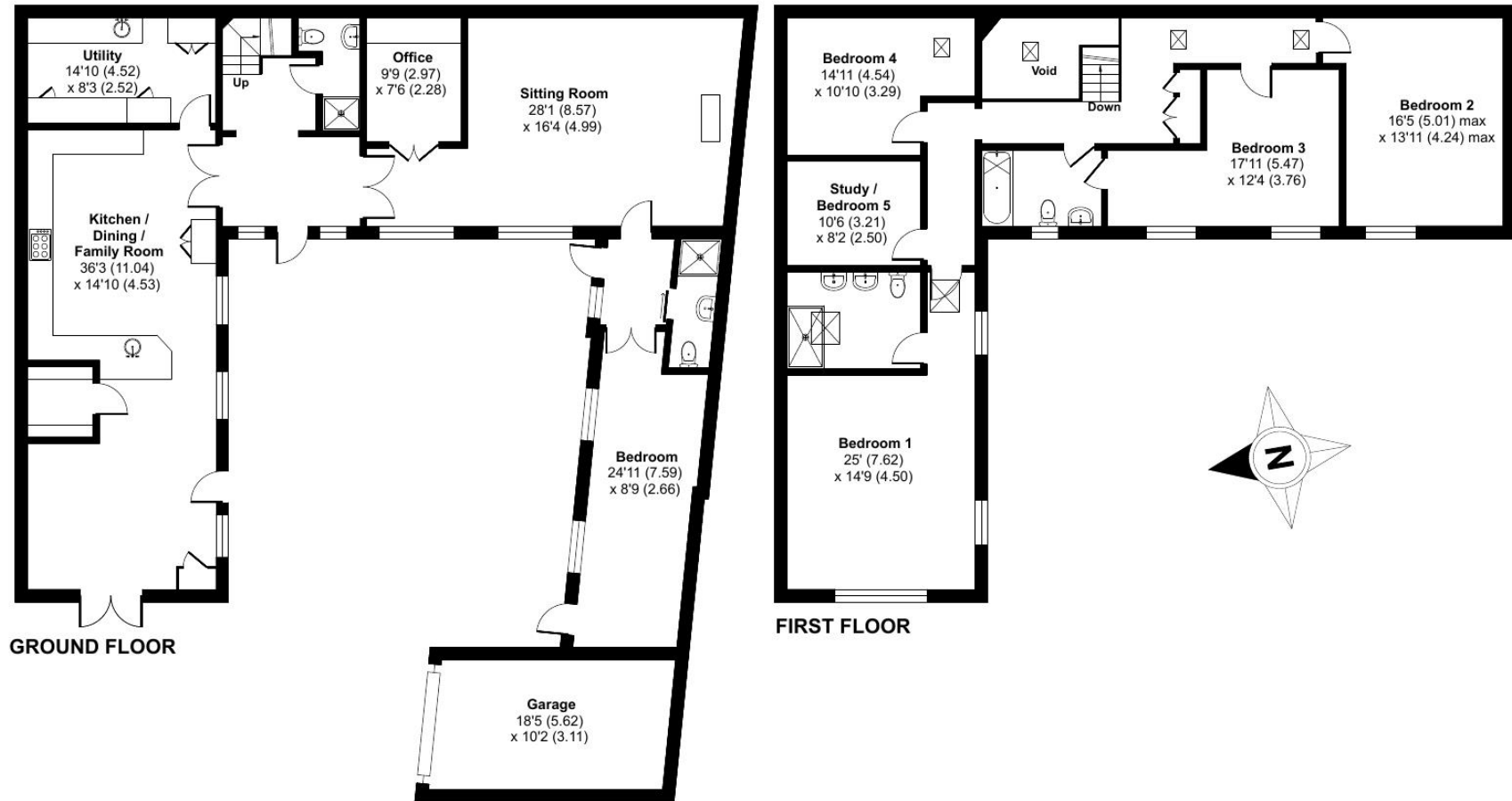


“Hassett House”, Hassett Street, Bedford MK40 1HA

www.taylorbrightwell.co.uk property@taylorbrightwell.co.uk

01234 326444

Money Laundering Regulations: Intending purchasers will be asked to produce identification documentation and we would ask for co-operation in order that there is no delay in agreeing a sale. Agents Notes: The agent has not tested any apparatus, equipment, fixtures & fittings or services and so cannot verify that they are in working order or fit for the purpose. A buyer is advised to obtain verification from their solicitor or surveyor. All photographs shown are for illustration purposes only and may depict items that are not for sale or included in the sale of the property. Please note that we have not checked the situation with regards to planning consents, building regulation consents and any other relevant consents relating to this property and therefore, any interested purchaser should carry out their own enquiries with the appropriate authorities. All measurements are approximate and for guidance only. The particulars do not form part of any contract and all properties are offered subject to contract. Neither Taylor Brightwell nor any of its employees or agents has any authority to make or give any representation or warranty whatsoever in relation to this property.



Approximate Area = 2903 sq ft / 269.6 sq m (excludes void)

Garage = 188 sq ft / 17.4 sq m

Total = 3091 sq ft / 287 sq m

For identification only - Not to scale



Floor plan produced in accordance with RICS Property Measurement 2nd Edition, Incorporating International Property Measurement Standards (IPMS2 Residential). © nichecom 2026. Produced for Taylor Brightwell. REF: 1481196