



**1 Tyne Crescent, Brickhill,  
Bedford MK41 7UJ**

**Taylor  
Brightwell**



A substantial 5/6 bedroom detached residence extending to over 2,300 sq ft of versatile accommodation, occupying an enviable corner plot in this highly desirable location within Brickhill providing excellent access to local amenities, well regarded schools, the town centre and railway station.

The light filled and generously proportioned accommodation comprises an impressive reception hall, a refitted cloakroom and a bespoke fitted study, ideal for home working. To the rear, the stand out feature is the exceptional open plan kitchen/dining room, thoughtfully designed offering an extensive range of fitted units, integrated appliances and ample space for entertaining and family gatherings. In addition, there is a large and inviting sitting room providing an ideal space for relaxation plus a further optional 6th bedroom with a part constructed ensuite shower room.

On the first floor, a spacious landing leads to five well proportioned bedrooms, with the principal and guest bedroom both benefiting from ensuite shower rooms and a well appointed family bathroom serves the remaining bedrooms.

Externally, the property is set on a generous corner plot, with a walled frontage and gated access to an extensive driveway providing ample off road parking for multiple vehicles and leading to the double garage with electric door. Gated side access leads to the rear garden, which offers a good degree of privacy and space for outdoor entertaining and family enjoyment.

This impressive home with great potential represents an excellent opportunity for growing families seeking spacious and versatile accommodation in a prime residential location. Viewing is highly recommended.

- \* **5/6 Bedrooms**
- \* **Over 2300 Sq Ft**
- \* **Impressive Kitchen/Dining Room**
- \* **2 Ensuities**
- \* **Spacious Sitting Room**
- \* **Fitted Study**
- \* **Double Glazing**
- \* **Gas Radiator Heating**
- \* **Double Garage & Large Gated Driveway**
- \* **66 Ft x 59 Ft Max Rear Garden**
- \* **No Upward Chain**

**FREEHOLD**



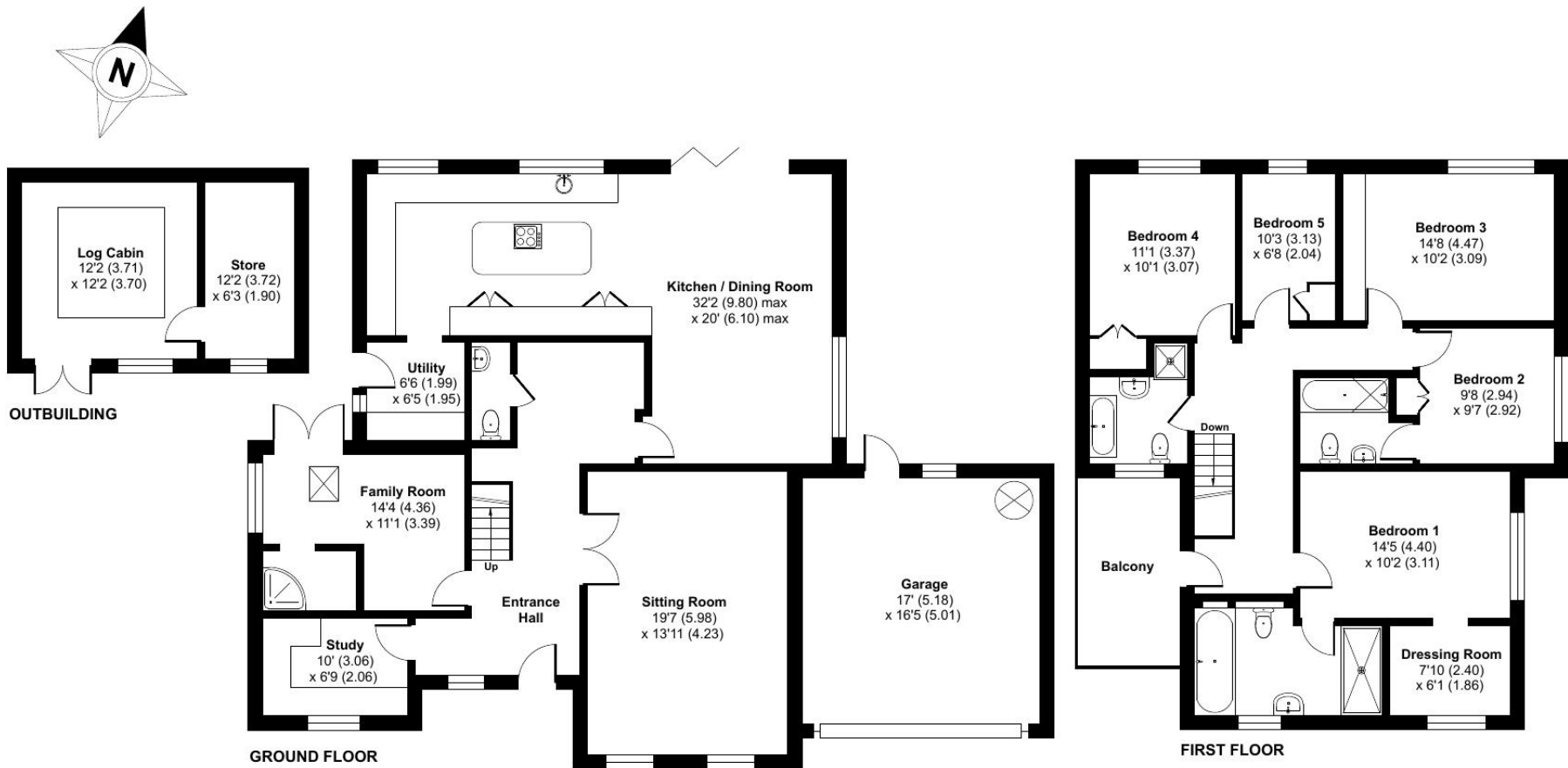
“Hassett House”, Hassett Street, Bedford MK40 1HA

[www.taylorbrightwell.co.uk](http://www.taylorbrightwell.co.uk)    [property@taylorbrightwell.co.uk](mailto:property@taylorbrightwell.co.uk)

**01234 326444**

Money Laundering Regulations: Intending purchasers will be asked to produce identification documentation and we would ask for co-operation in order that there is no delay in agreeing a sale.

Agents Notes: The agent has not tested any apparatus, equipment, fixtures & fittings or services and so cannot verify that they are in working order or fit for the purpose. A buyer is advised to obtain verification from their solicitor or surveyor. All photographs shown are for illustration purposes only and may depict items that are not for sale or included in the sale of the property. Please note that we have not checked the situation with regards to planning consents, building regulation consents and any other relevant consents relating to this property and therefore, any interested purchaser should carry out their own enquiries with the appropriate authorities. All measurements are approximate and for guidance only. The particulars do not form part of any contract and all properties are offered subject to contract. Neither Taylor Brightwell nor any of its employees or agents has any authority to make or give any representation or warranty whatsoever in relation to this property.



Approximate Area = 2306 sq ft / 214.2 sq m

Garage = 279 sq ft / 25.9 sq m

Outbuilding = 230 sq ft / 21.3 sq m

Total = 2815 sq ft / 261.4 sq m

For identification only - Not to scale



Floor plan produced in accordance with RICS Property Measurement 2nd Edition, Incorporating International Property Measurement Standards (IPMS2 Residential). © nichecom 2026. Produced for Taylor Brightwell. REF: 1483323