



**183, Bedford Road, Wilstead,
Bedfordshire MK45 3HU**





An extended 2/3 bedroom 1920s semi-detached home, featuring a large, superbly maintained rear garden, a detached garage, and ample off road parking. Ideally located on the fringe of Wixams and Wilstead, the property benefits from easy access to a variety of local amenities and excellent road links.

The home offers spacious and versatile accommodation, beginning with a generous reception hall that provides access to a private, sunny courtyard and opens through to both the bay fronted sitting room and a well proportioned, separate dining room. Double doors lead into a good sized, bespoke fitted kitchen, which flows seamlessly into a breakfast/utility area, a boot room, and ultimately the bright and airy conservatory, enjoying delightful views over the rear garden.

Upstairs, there are two generous double bedrooms, along with a versatile additional room suitable as a dressing room, nursery, or third bedroom. The first floor is completed by a four piece family bathroom and a separate WC.

Externally, the property boasts a beautifully landscaped rear garden, rich in colour and interest. Paved pathways, bordered by established planting, lead to various seating areas, an ornamental pond, a well kept lawn, and a garden shed with electricity. A pedestrian gate provides access to the driveway, offering parking for up to three vehicles, alongside a detached garage (also with electricity) and an additional tool shed. The enclosed front garden features a block paved pathway and a selection of evergreen planting.

In summary, this is a well maintained family home with a particularly attractive and spacious garden, offered for sale with no upward chain. Early viewing is highly recommended.

*** 1920's 2/3 Bedroom Semi Detached House**

*** 2 Reception Rooms**

*** Large Conservatory**

*** Kitchen & Breakfast/Utility Room**

*** 4 Piece Bathroom**

*** Additional First Floor WC**

*** Double Glazing**

*** Gas Radiator Heating**

*** Garage & Off Road Parking**

*** Superbly Maintained Garden**

*** No Upward Chain**

FREEHOLD



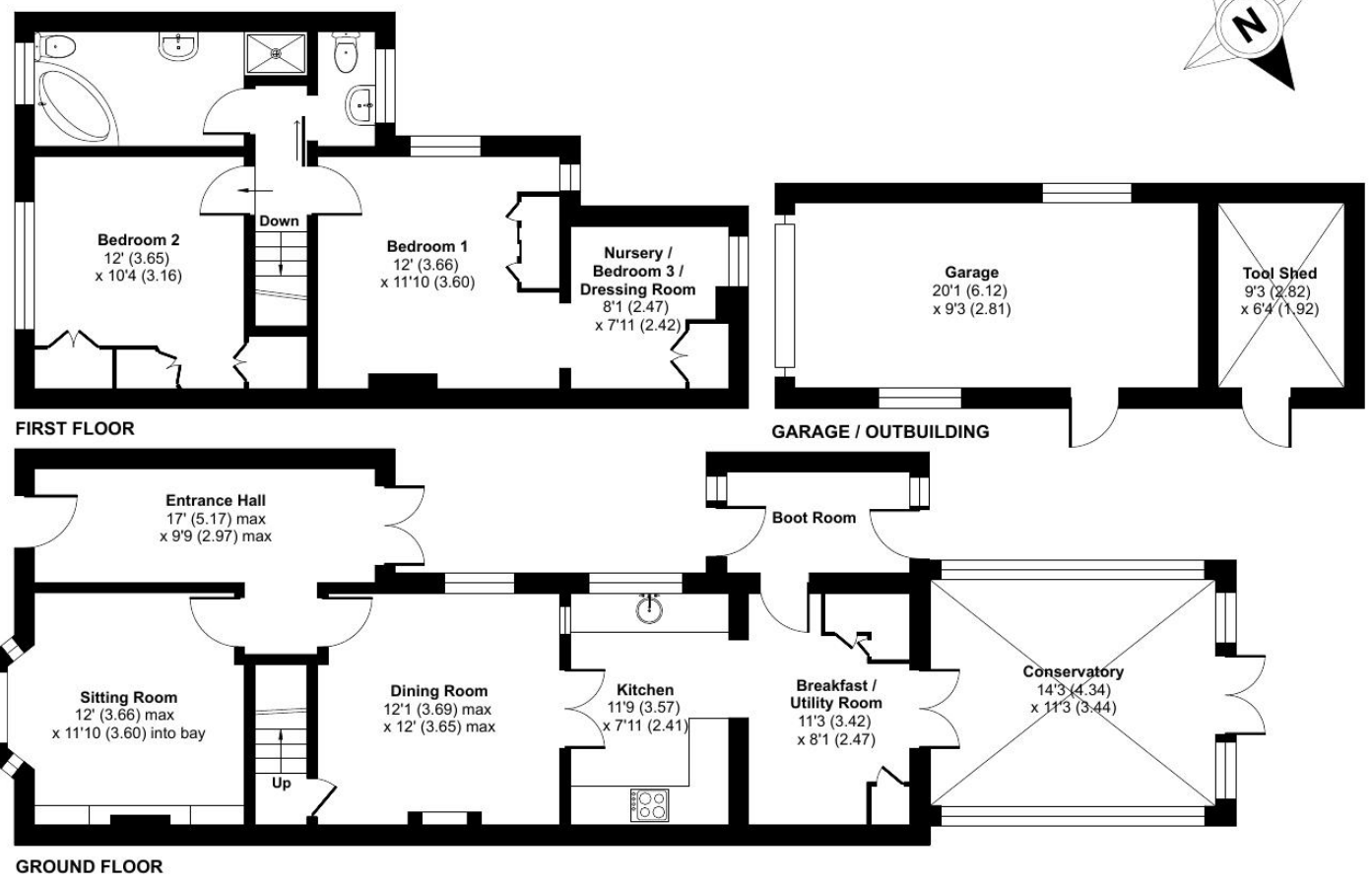
“Hassett House”, Hassett Street, Bedford MK40 1HA

www.taylorbrightwell.co.uk

property@taylorbrightwell.co.uk

01234 326444

Money Laundering Regulations: Intending purchasers will be asked to produce identification documentation and we would ask for co-operation in order that there is no delay in agreeing a sale. Agents Notes: The agent has not tested any apparatus, equipment, fixtures & fittings or services and so cannot verify that they are in working order or fit for the purpose. A buyer is advised to obtain verification from their solicitor or surveyor. All photographs shown are for illustration purposes only and may depict items that are not for sale or included in the sale of the property. Please note that we have not checked the situation with regards to planning consents, building regulation consents and any other relevant consents relating to this property and therefore, any interested purchaser should carry out their own enquiries with the appropriate authorities. All measurements are approximate and for guidance only. The particulars do not form part of any contract and all properties are offered subject to contract. Neither Taylor Brightwell nor any of its employees or agents has any authority to make or give any representation or warranty whatsoever in relation to this property.



Approximate Area = 1320 sq ft / 122.6 sq m
 Garage = 185 sq ft / 17.1 sq m
 Outbuilding = 58 sq ft / 5.3 sq m
 Total = 1563 sq ft / 145 sq m
 For identification only - Not to scale



Floor plan produced in accordance with RICS Property Measurement 2nd Edition, Incorporating International Property Measurement Standards (IPMS2 Residential). © nichecom 2026. Produced for Taylor Brightwell. REF: 1469885