



**16 Arun Close, Brickhill,
Bedford MK41 7AD**

**Taylor
Brightwell**



An exceptionally well maintained and extended three bedroom detached bungalow providing light, airy and very spacious accommodation. Ideally located in a peaceful close of similar styled homes within the highly desirable Brickhill area which is well served by a host of essential, local amenities.

The well appointed accommodation includes a good sized reception hall with a refitted cloakroom and airing cupboard, a generous sized sitting room with a versatile study/snug leading off, the three nicely proportioned bedrooms, two of which feature built in wardrobes and a refitted bathroom. Completing the accommodation is a useful utility room and the impressive, refitted kitchen/dining room with a comprehensive range of modern units, a part vaulted ceiling, a large feature window allowing natural light to flood in and doors leading to the rear garden.

Externally there is a large block paved driveway to the front providing parking for several cars leading to the single garage which has been subdivided to create a convenient storage area and an office/hobbies room. The 48 ft x 37 ft rear garden has been beautifully landscaped to provide a low maintenance retreat with colourful borders and paved seating areas.

This very well presented bungalow is offered for sale with no upward chain and viewing is highly recommended.

- * **Extended Detached Bungalow**
- * **3 Bedrooms**
- * **Spacious Sitting Room**
- * **Study**
- * **Impressive Kitchen/Dining Room**
- * **Double & Triple Glazing**
- * **Gas Radiator Heating**
- * **Attractive Low Maintenance Rear Garden**
- * **Driveway With Ample Parking**
- * **Converted Garage/Office**



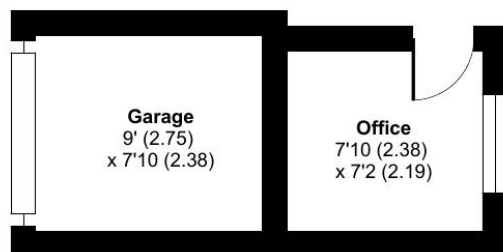
Freehold

“Hassett House”, Hassett Street, Bedford MK40 1HA

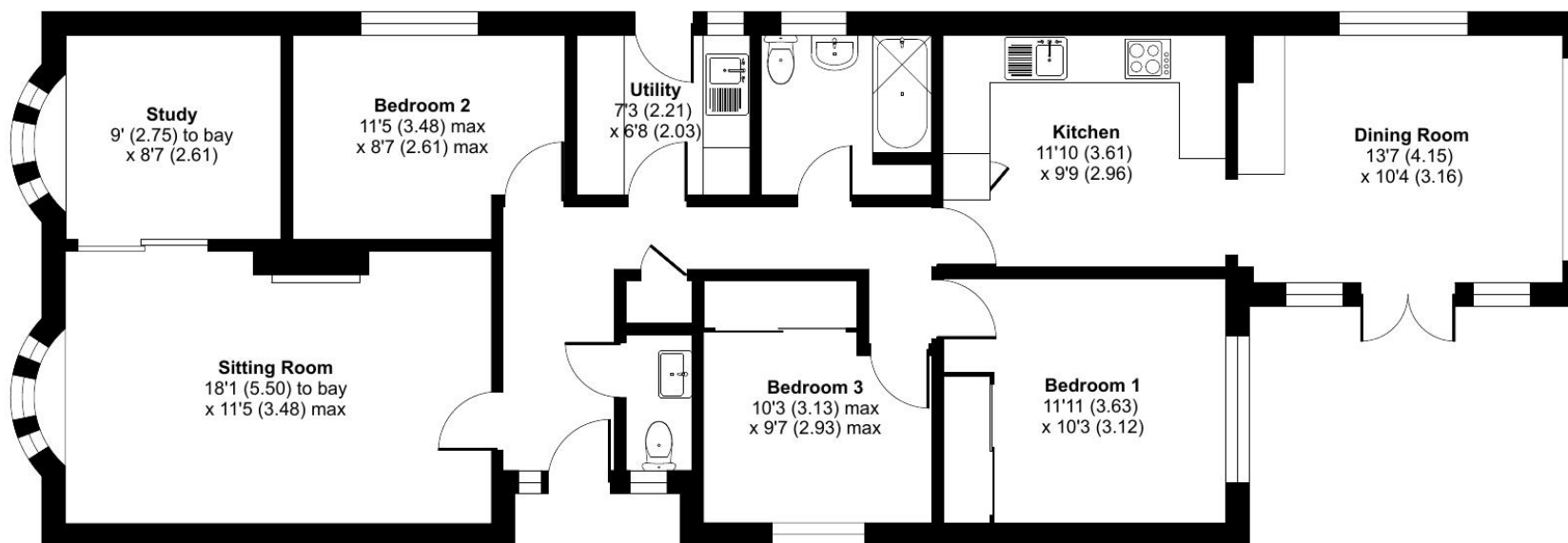
www.taylorbrightwell.co.uk property@taylorbrightwell.co.uk

01234 326444

Money Laundering Regulations: Intending purchasers will be asked to produce identification documentation and we would ask for co-operation in order that there is no delay in agreeing a sale. Agents Notes: The agent has not tested any apparatus, equipment, fixtures & fittings or services and so cannot verify that they are in working order or fit for the purpose. A buyer is advised to obtain verification from their solicitor or surveyor. All photographs shown are for illustration purposes only and may depict items that are not for sale or included in the sale of the property. Please note that we have not checked the situation with regards to planning consents, building regulation consents and any other relevant consents relating to this property and therefore, any interested purchaser should carry out their own enquiries with the appropriate authorities. All measurements are approximate and for guidance only. The particulars do not form part of any contract and all properties are offered subject to contract. Neither Taylor Brightwell nor any of its employees or agents has any authority to make or give any representation or warranty whatsoever in relation to this property.



GARAGE



GROUND FLOOR

Approximate Area = 1132 sq ft / 105.1 sq m

Garage = 70 sq ft / 6.5 sq m

Office = 56 sq ft / 5.2 sq m

Total = 1258 sq ft / 116.8 sq m

For identification only - Not to scale



Floor plan produced in accordance with RICS Property Measurement 2nd Edition, incorporating International Property Measurement Standards (IPMS2 Residential). © nichecom 2026. Produced for Taylor Brightwell. REF: 1488435