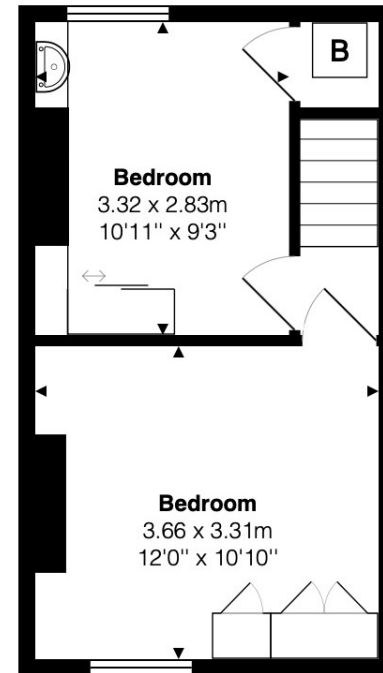


Approx. Floor
Area 402 Sq.Ft.
(37 Sq.M)



Approx. Floor
Area 268 Sq.Ft.
(25 Sq.M)

51 Park Road, Henley On Thames, Oxfordshire, RG9 1DB

The approximate total area for the elements of the property represented on the floorplan is 62 SqM (670 Sq.Ft)

This floor plan is provided by Expert Survey Solutions Ltd is for indicative guidance only. Whilst every attempt has been made to ensure the accuracy of the floor plans contained here, measurements of doors, windows and rooms are approximate and no responsibility is taken for any error, omission or mis-statement. Details shown on this floorplan including all measurements, areas and proportions cannot be guaranteed by either the provider or estate agency and should not be relied upon. If there is any area where accuracy is required, please contact the selling agent for clarification.



TIM PEERS
ESTATE AGENTS