

Earls Meade | Luton



£195,000

Found in the prestigious Earls Meade development is this attractive two bedroom apartment being offered to the market without the complications of an onward chain.

01582 249155

www.venture-residential.co.uk

Description

Found in the prestigious Earls Meade development is this attractive two bedroom apartment being offered to the market without the complications of an onward chain.

The apartment accommodation consists of an entrance hall, two bedrooms with the master benefitting from having built in wardrobes, family bathroom, kitchen with ample cupboard space and a spacious lounge/ diner with a juliet balcony.

Externally this apartment offers an allocated parking space.

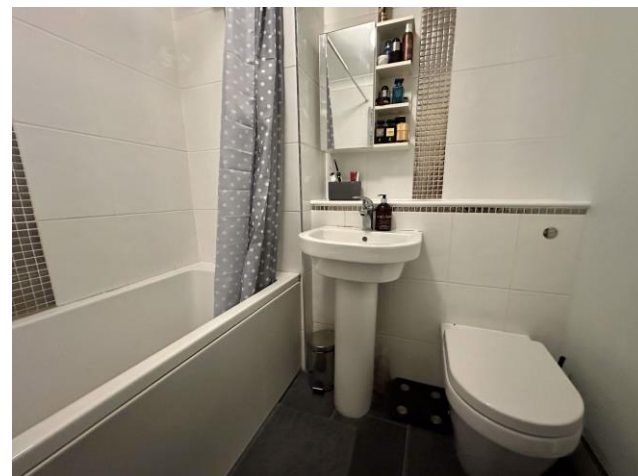
The owner has informed us of the below information:

Current lease: 92 years remaining.

Service charge: £146 p/m

Ground rent: £10 p/a

Marquis Court is a modern development located in Earls Meade which is just off the prestigious Old Bedford Road. Ideally located just 0.5 miles from Luton mainline train station and also walking distance into the town centre. Great schooling is provided nearby from St. Matthews Primary and Stopsley High School.



Accommodation

Entrance Hall

Door to side aspect, radiator and storage cupboards.

Lounge/Diner 15' 9" x 20' 7" (4.790m x 6.278m)

Windows to front aspect, radiator x 2 and juliet style balcony to front aspect.

Kitchen 9' 5" x 6' 7" (2.879m x 2.012m)

Fitted kitchen with a range of wall and base units and work surfaces, stainless steel sink drainer, splash back tiling, space for fridge/freezer, dishwasher and washing machine, electric hob and oven with a cooker hood and window to front aspect.

Bedroom 1 10' 1" x 14' 5" (3.076m x 4.382m)

Window to rear aspect, built in wardrobes and radiator.

Bedroom 2 9' 0" x 9' 10" (2.750m x 3.008m)

Window to rear aspect and radiator.

Bathroom

Bath with mixer taps and shower attachment, pedestal wash hand basin, WC, extraction fan, radiator and part tiled walls.



FLOOR PLAN

