



venture
RESIDENTIAL

Flint Court, Dunstable, Bedfordshire, LU6 1JP

Price £170,000 Leasehold

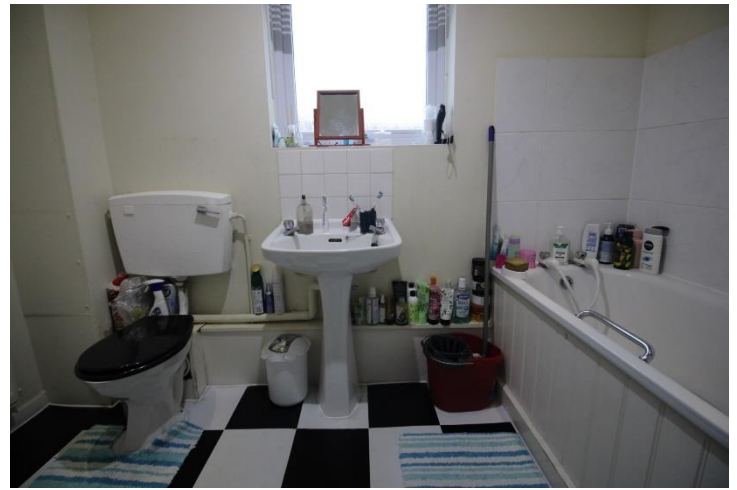


Discover a perfect blend of modern comfort and convenience with this charming 1-bedroom top floor maisonette located in the heart of Dunstable. Boasting its own entrance, secure parking to the rear, and a private balcony.

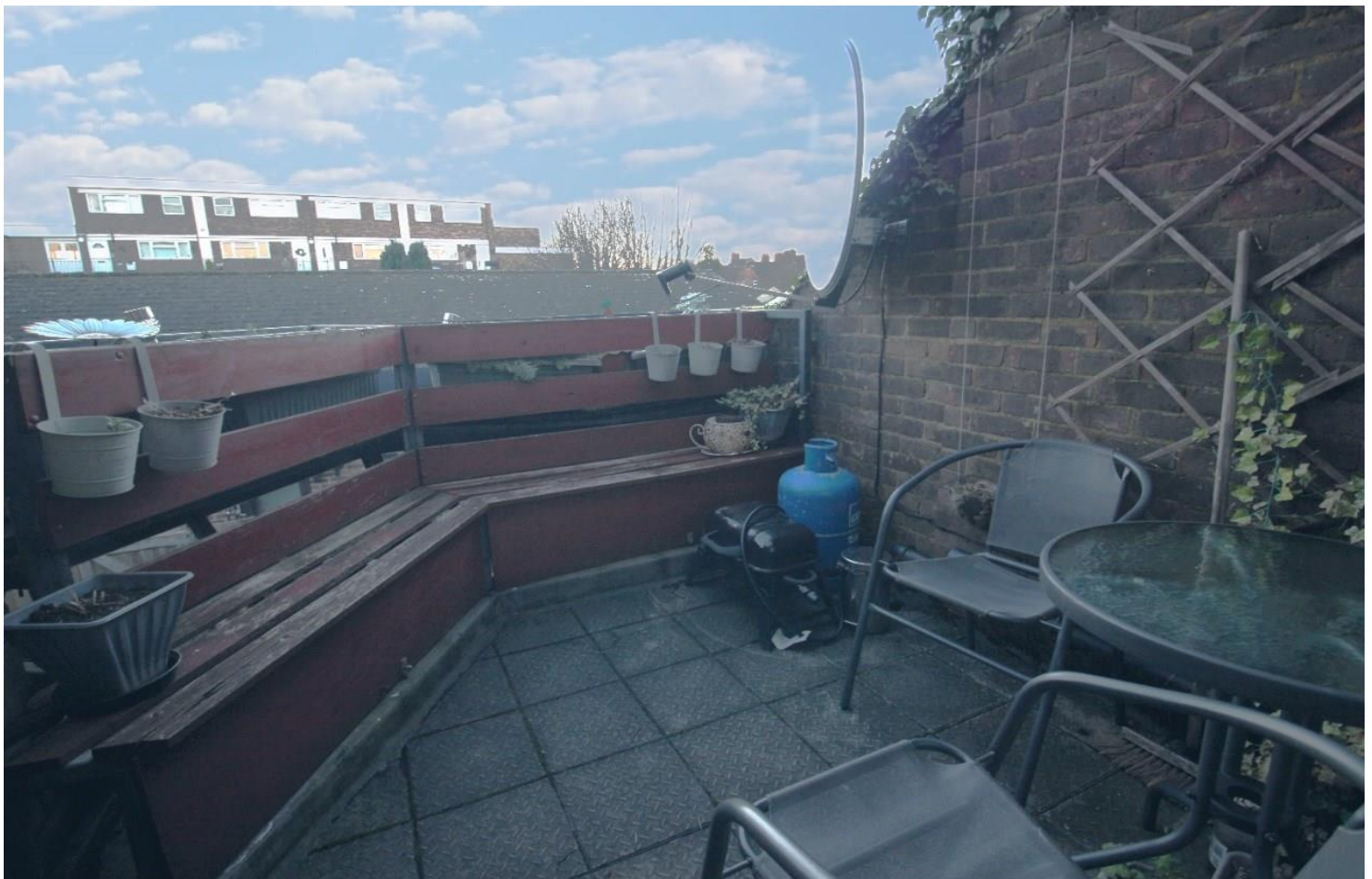


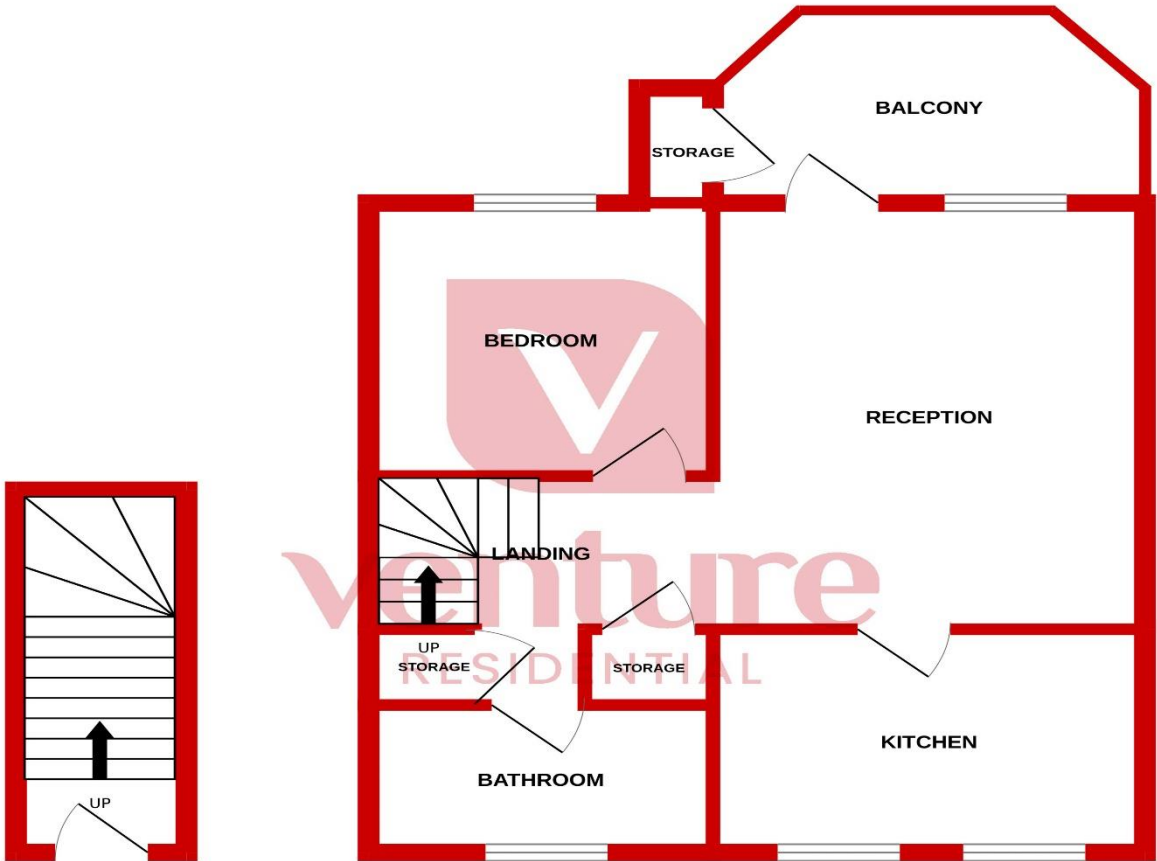
Flint Court

Dunstable, LU6 1JP

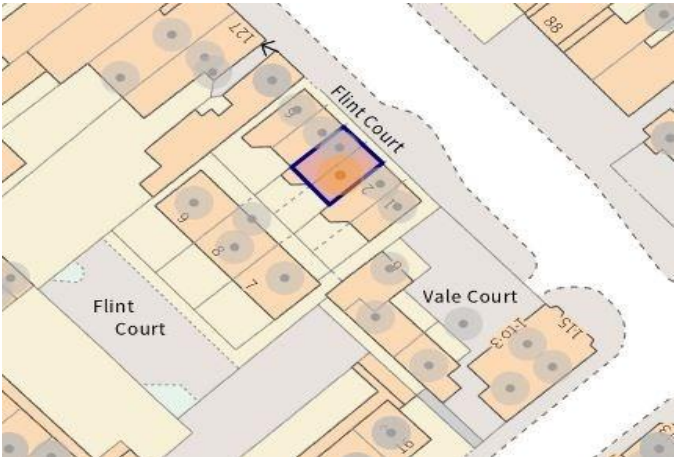


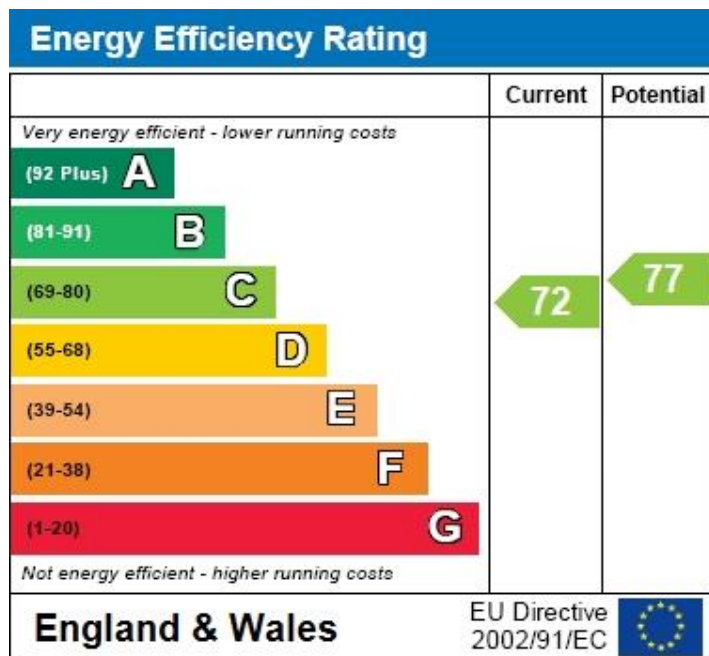
Manually enter text or bullet points





Whilst every attempt has been made to ensure the accuracy of the floorplan contained here, measurements of doors, windows, rooms and any other items are approximate and no responsibility is taken for any error, omission or mis-statement. This plan is for illustrative purposes only and should be used as such by any prospective purchaser. The services, systems and appliances shown have not been tested and no guarantee as to their operability or efficiency can be given.
Made with Metropix ©2024





Notice

Please note we have not tested any apparatus, fixtures, fittings, or services. Interested parties must undertake their own investigation into the working order of these items. All measurements are approximate and photographs provided for guidance only.



**9 Compton Avenue,
Luton,
Bedfordshire,
LU4 9AX**

**T: 01582 249155
E: info@venture-residential.co.uk**



rightmove.co.uk
The UK's number one property website



OnTheMarket Zoopla