



Priestleys, Luton, Bedfordshire, LU1 5QL

Price £350,000 Freehold



Situated in the sought-after Farley Hill area of Luton, this 3-bedroom end-of-terrace property presents a fantastic opportunity for buyers looking to put their own stamp on a home.



Priestleys

Luton, LU1 5QL



- 3 Bedrooms
- End-of-Terrace
- Requires Modernisation
- Lounge
- Kitchen/Diner
- Family Shower room
- Driveway for 2 cars
- Large rear garden

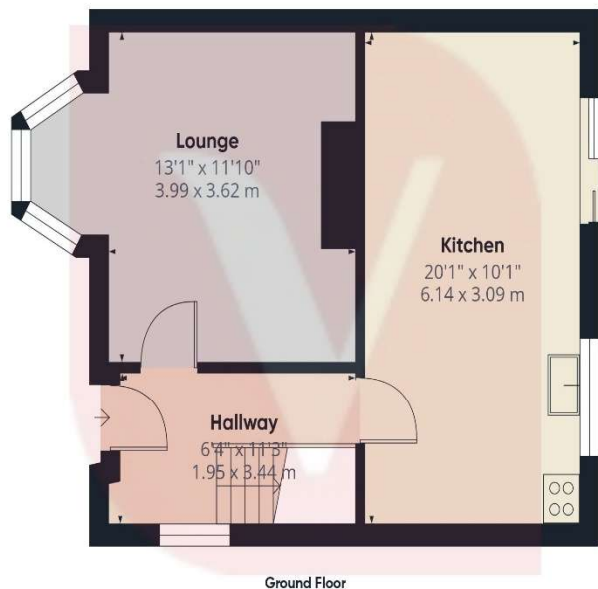


Situated in the sought-after Farley Hill area of Luton, this 3-bedroom end-of-terrace property presents a fantastic opportunity for buyers looking to put their own stamp on a home. Requiring modernisation throughout, the property offers great potential to create a comfortable and stylish family residence.

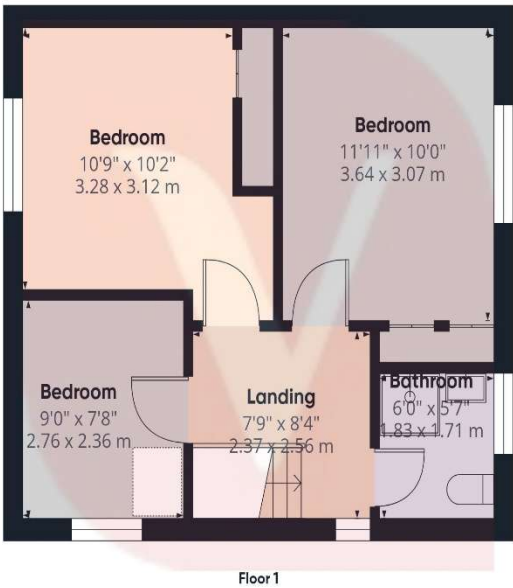
The accommodation comprises a welcoming entrance hall, a well-proportioned lounge, and a kitchen/diner with ample space to redesign or extend (STPP). Upstairs, you'll find three bedrooms served by a family shower room.

Externally, the home benefits from a front driveway providing off-road parking for two vehicles, and a generously sized rear garden – perfect for landscaping, entertaining, or future development potential.

Located close to local schools, amenities, transport links, and just a short drive from Luton town centre and the M1, this is an ideal purchase for those looking to invest, renovate, or create a family home to their own taste.



Approximate total area⁽¹⁾
859 ft²
79.7 m²



(1) Excluding balconies and terraces

Calculations reference the RICS IPMS 3C standard. Measurements are approximate and not to scale. This floor plan is intended for illustration only.

GIRAFFE360



Notice

Please note we have not tested any apparatus, fixtures, fittings, or services. Interested parties must undertake their own investigation into the working order of these items. All measurements are approximate and photographs provided for guidance only.



9 Compton Avenue,
Luton,
Bedfordshire,
LU4 9AX

T: 01582 249155
E: info@venture-residential.co.uk

