



The Pulse, High Street North, Dunstable, Bedfordshire, LU6 1HX  
Guide Price £170,000 Leasehold



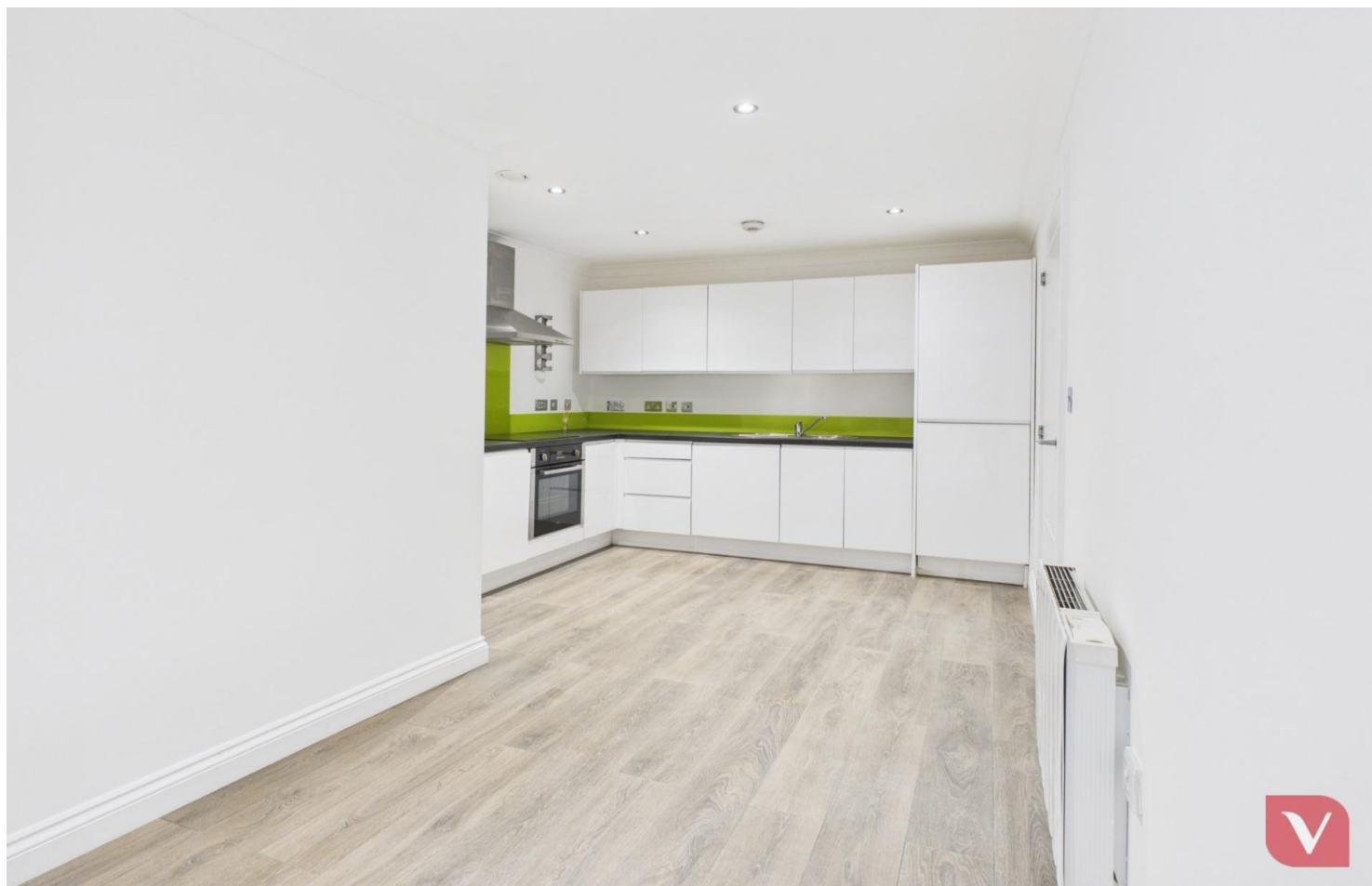
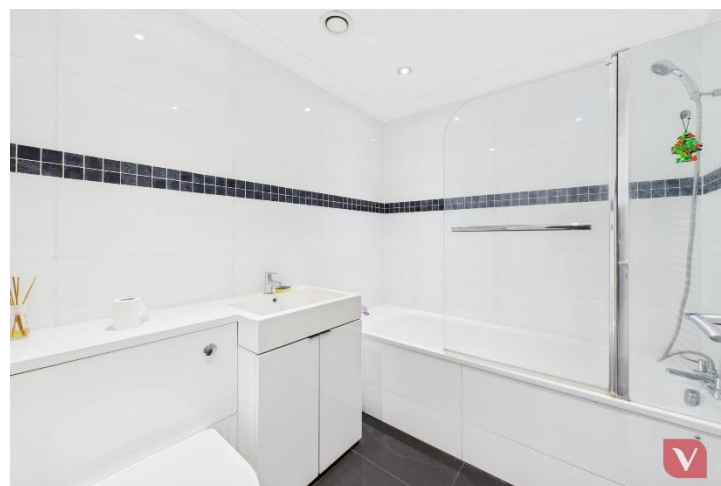
Located in the heart of Central Dunstable, this modern two-bedroom apartment is offered to the market with no upper chain, making it an ideal choice for first-time buyers and investors alike.



# High Street North

## Dunstable, LU6 1HX

- TWO BEDROOM MODERN APARTMENT
- CENTRAL DUNSTABLE
- OPEN PLAN LOUNGE / KITCHEN
- FULLY FITTED APPLIANCES
- DOUBLE BEDROOMS
- MODERN BATHROOM
- CLOSE TO LOCAL AMENITIES AND PUBLIC TRANSPORT
- OPTION TO BUY PERMIT PARKING
- ELECTRIC HEATING



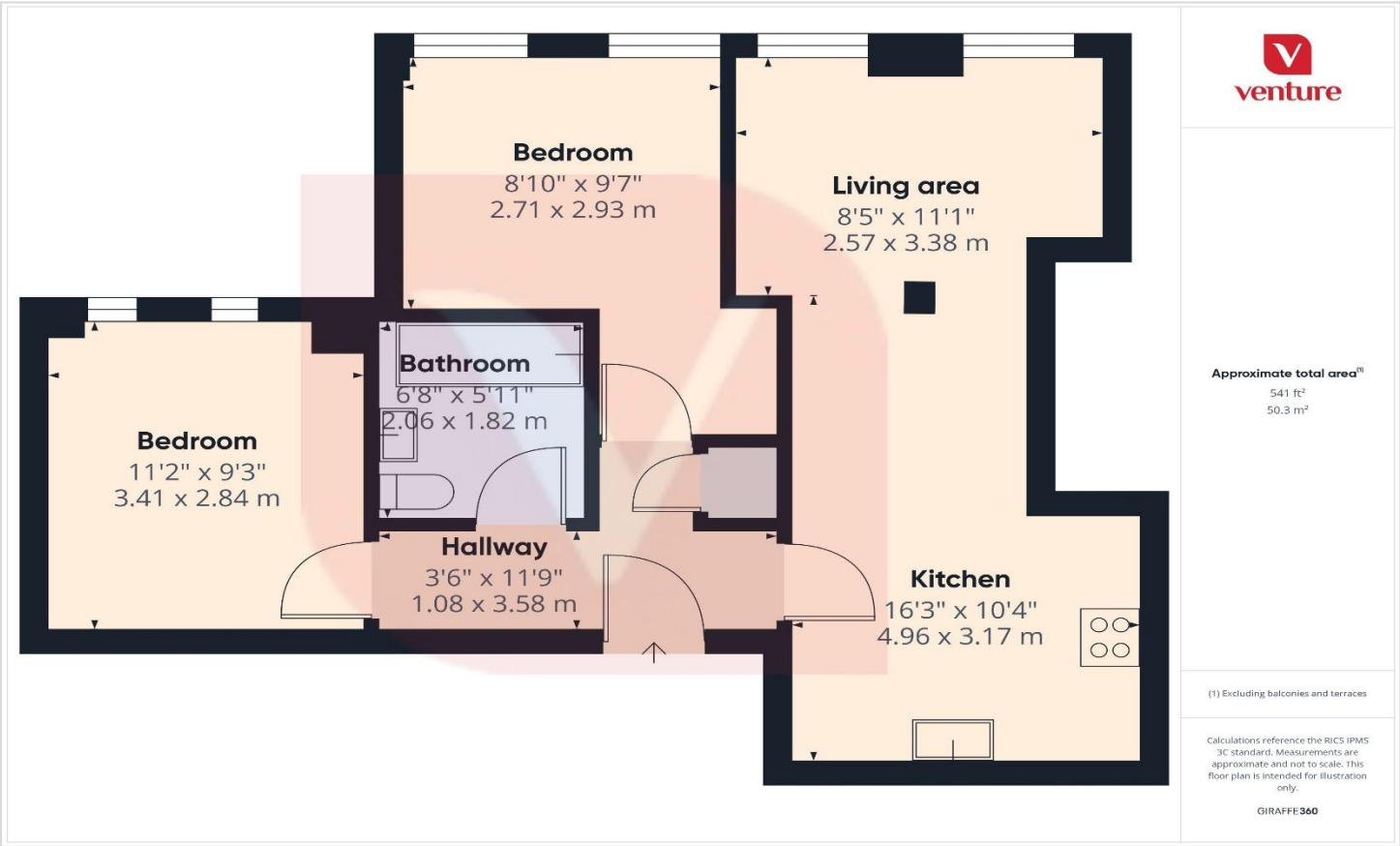
Located in the heart of Central Dunstable, this modern two-bedroom apartment is offered to the market with no upper chain, making it an ideal choice for first-time buyers and investors alike.

Accessed via well-maintained communal areas, the property is situated on the first floor and features a welcoming entrance hall leading to a bright open-plan lounge, kitchen, and dining area. The contemporary kitchen is fitted with integrated appliances, including a washing machine, fridge/freezer, electric oven, and a brand-new hob. The apartment has been freshly redecorated throughout and benefits from laminate flooring in every room, creating a clean and modern feel.

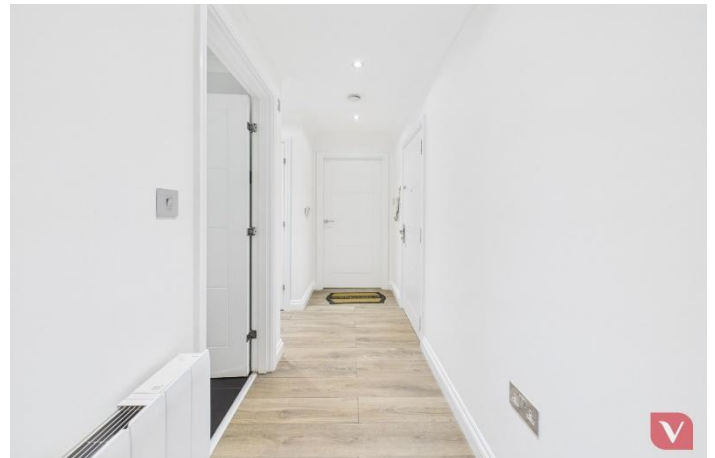
The property comes with a long lease of approximately 114 years remaining, with a ground rent of £200 per year and a service charge of £1,800 per year.

Perfectly positioned for convenience, the home offers easy access to Dunstable Town Centre, with its range of parks, cafés, and local shops. Excellent transport links are close by, with regular bus routes to Luton Train Station and Luton Airport, making it ideal for commuters.

This beautifully presented apartment is ready to move into — a fantastic opportunity not to be missed.







## Notice

Please note we have not tested any apparatus, fixtures, fittings, or services. Interested parties must undertake their own investigation into the working order of these items. All measurements are approximate and photographs provided for guidance only.



**9 Compton Avenue,  
Luton,  
Bedfordshire,  
LU4 9AX**

**T: 01582 249155  
E: [info@venture-residential.co.uk](mailto:info@venture-residential.co.uk)**

