



Beadlow Road, Luton, Bedfordshire, LU4 0QZ

Price £300,000 Freehold



Welcome to this charming end terrace property located in the vibrant town of Luton, Bedfordshire. Priced at £300,000, this delightful home offers a perfect blend of character and modern convenience.



Beadlow Road

Luton, LU4 0QZ



- 3 Bedrooms End of terrace
- 2 Receptions
- Front and Rear gardens
- Separate WC
- No Upper Chain
- Walking distance to L&D hospital
- Short Drive to M1 junction 11



Welcome to this charming end terrace property located in the vibrant town of Luton, Bedfordshire. Priced at £300,000, this delightful home offers a perfect blend of character and modern convenience.

The property has two reception rooms on the ground floor. The first reception room is a cosy living area, perfect for relaxing with family and friends. The second reception room could be used as a formal dining room, ideal for hosting dinner parties.

The kitchen is well-equipped with modern appliances and ample storage space, making meal preparation a breeze. Upstairs, you will find three generously sized bedrooms, offering plenty of space for a growing family or guests.

Outside, the property boasts a private garden, perfect for enjoying the outdoors during the warmer months.

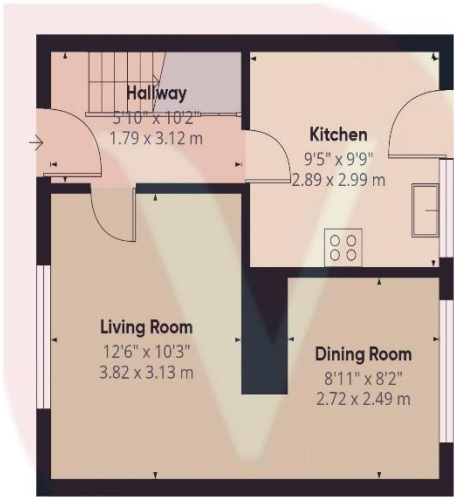
Located in Luton, Bedfordshire, this property benefits from excellent transport links, with Luton Airport Parkway station providing direct trains to London in under 30 minutes. The town centre is just a short distance away, offering a wide range of shops, restaurants, and amenities.

Luton is also home to a number of parks and green spaces, perfect for leisurely walks or picnics. Wardown Park and Stockwood Park are popular choices for residents looking to enjoy the outdoors.

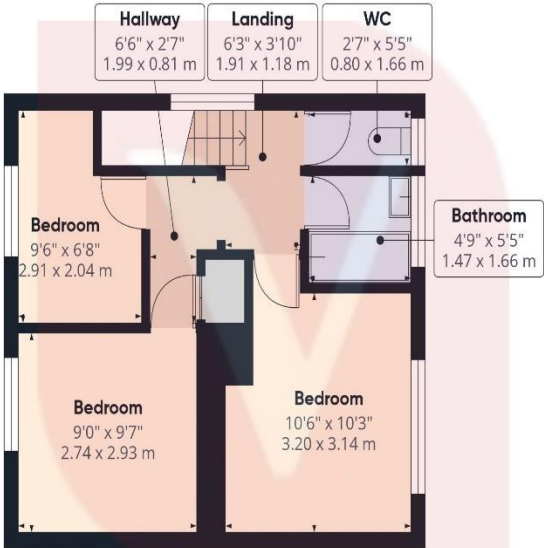
For those interested in culture and history, the Stockwood Discovery Centre is a must-visit attraction. This museum showcases the history of the local area through interactive exhibits and displays.

Sports enthusiasts will appreciate the variety of facilities available in Luton, including the Inspire Luton Sports Village and the Luton Town Football Club. Whether you enjoy swimming, tennis, or football, there is something for everyone to enjoy.

Overall, this end terrace property in Luton, Bedfordshire offers a fantastic opportunity for buyers looking to settle in a vibrant and well-connected town. With its spacious accommodation and convenient location, this home is sure to attract interest from a range of buyers. Contact us today to arrange a viewing and make this property your new home.



Ground Floor



Floor 1

Approximate total area^m
701 ft²
65.2 m²

(1) Excluding balconies and terraces

While every attempt has been made to ensure accuracy, all measurements are approximate, not to scale. This floor plan is for illustrative purposes only.

Calculations are based on RICS IPMS 3C standard.

GIRAFFE360



Energy Efficiency Rating		
	Current	Potential
Very energy efficient - lower running costs		
(92 Plus) A		
(81-91) B		85
(69-80) C	71	
(55-68) D		
(39-54) E		
(21-38) F		
(1-20) G		
Not energy efficient - higher running costs		
England & Wales	EU Directive 2002/91/EC	



Notice

Please note we have not tested any apparatus, fixtures, fittings, or services. Interested parties must undertake their own investigation into the working order of these items. All measurements are approximate and photographs provided for guidance only.



**9 Compton Avenue,
Luton,
Bedfordshire,
LU4 9AX**

**T: 01582 249155
E: info@venture-residential.co.uk**

