



Church Road, Luton, Bedfordshire, LU3 3PB

Guide Price £140,000-£150,000 Leasehold



Guide price £140,000 - £150,000

Located in the highly desirable area of Upper Sundon, on the outskirts of Luton, this very spacious 1-bedroom first floor flat offers a rare opportunity for first-time buyers or buy-to-let investors seeking a property in a peaceful, well-connected setting.



Church Road

Luton, LU3 3PB



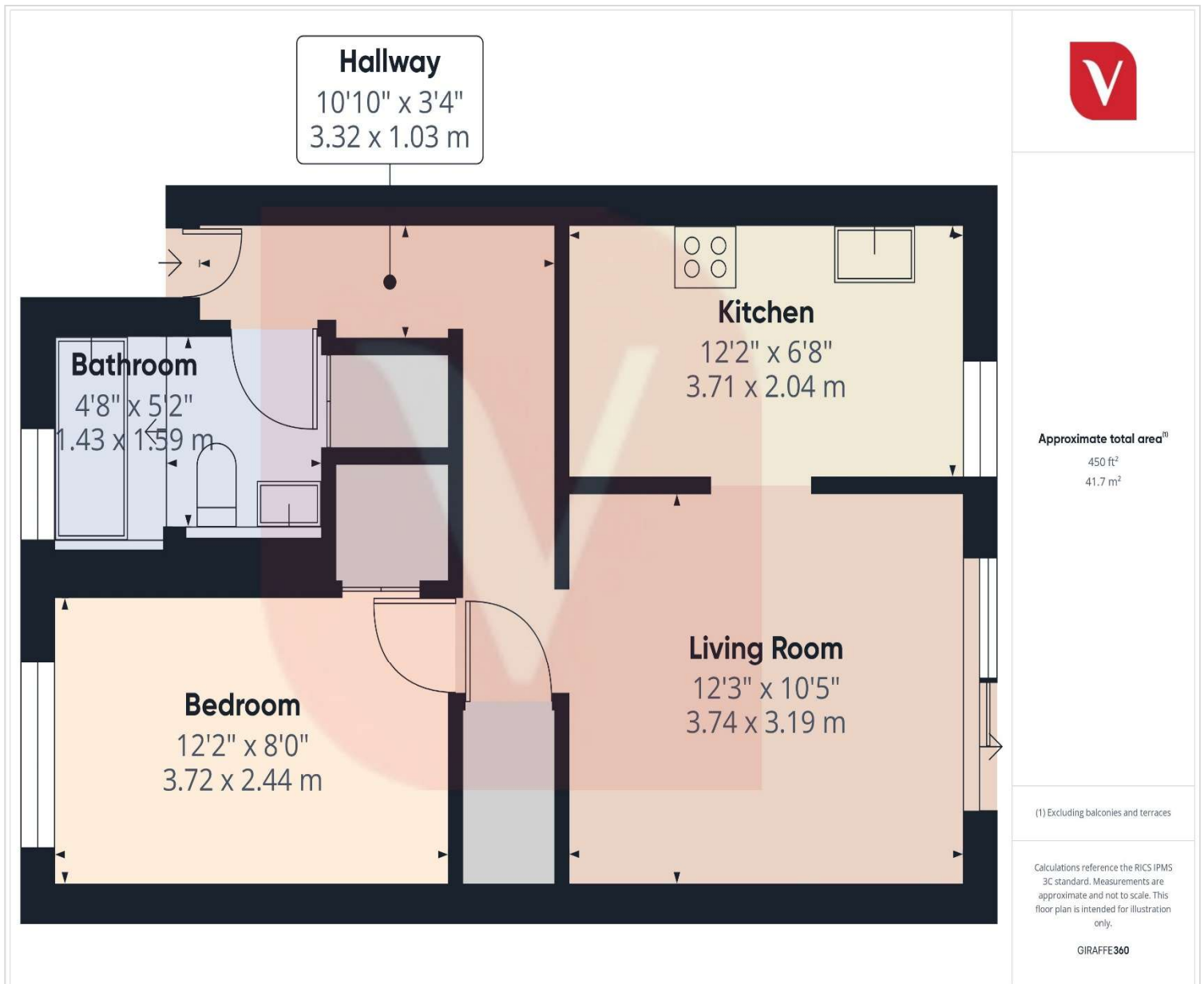
- Spacious 1 Bedroom Flat
- First Floor
- Separate Lounge
- Fitted Kitchen
- Bathroom
- Private Balcony from the lounge
- Sought after Upper Sundon location
- Ideal for First-Time Buyers or Buy-to-Let Investors
- No Upper Chain



Located in the highly desirable area of Upper Sundon, on the outskirts of Luton, this very spacious 1-bedroom first floor flat offers a rare opportunity for first-time buyers or buy-to-let investors seeking a property in a peaceful, well-connected setting.

The accommodation comprises a welcoming entrance hall, a generous separate lounge with direct access to a private balcony – perfect for relaxing or enjoying your morning coffee – a fitted kitchen, and a well-appointed bathroom.

Set in a quiet residential location with green surroundings, this flat is ideally positioned for easy access to local transport links, the M1, and Luton town centre, while benefiting from the tranquillity of village-style living.





Energy Efficiency Rating		
	Current	Potential
Very energy efficient - lower running costs		
(92 Plus) A		
(81-91) B		
(69-80) C	69	77
(55-68) D		
(39-54) E		
(21-38) F		
(1-20) G		
Not energy efficient - higher running costs		
England & Wales	EU Directive 2002/91/EC	

Notice

Please note we have not tested any apparatus, fixtures, fittings, or services. Interested parties must undertake their own investigation into the working order of these items. All measurements are approximate and photographs provided for guidance only.



9 Compton Avenue,
Luton,
Bedfordshire,
LU4 9AX

T: 01582 249155
E: info@venture-residential.co.uk

