



Viewfields

La Grande Route De St Laurent



Viewfields, La Grande Route De St Lauent, St Lawrence, JE3 1NL

Approached via a private driveway and bordered by open fields, this impressive detached family home offers over 5,000 sq ft of luxury accommodation, recently built to the highest standards throughout. Inside, the home features a stylish designed interior, with quality tiling throughout the ground floor and a spacious layout ideal for modern family living and entertaining. At the heart of the home lies a beautifully appointed shaker style kitchen with a central island and quality integrated Miele appliances, seamlessly flowing into the expansive open plan living and dining areas. A stunning sunroom with contemporary sliding doors creates effortless indoor/outdoor living, providing direct access to the landscaped garden and heated swimming pool. A separate wing on the ground floor includes two bedroom suites and a large utility room, perfect for guest accommodation, multi-generational living, or staff quarters. Upstairs, you'll find three luxurious double bedroom suites, each offering space, comfort, and style. The exceptional master bedroom features two walk-in wardrobes and a luxurious four piece ensuite bathroom, complete with far reaching rural views. The property also includes two versatile attic rooms and an additional bathroom, offering flexibility for a home office or additional bedrooms. Set within a low maintenance landscaped garden, the home features lawn and patio areas, sunken seating area, a heated swimming pool and a stylish pool house with shower room, perfect for entertaining and relaxing at home. The home also benefits from its ample driveway parking and a 23ft integral garage, providing excellent storage and convenience.



Parish: St Lawrence

Qualification: Qualified

Tenure: Freehold

Price £4,250,000



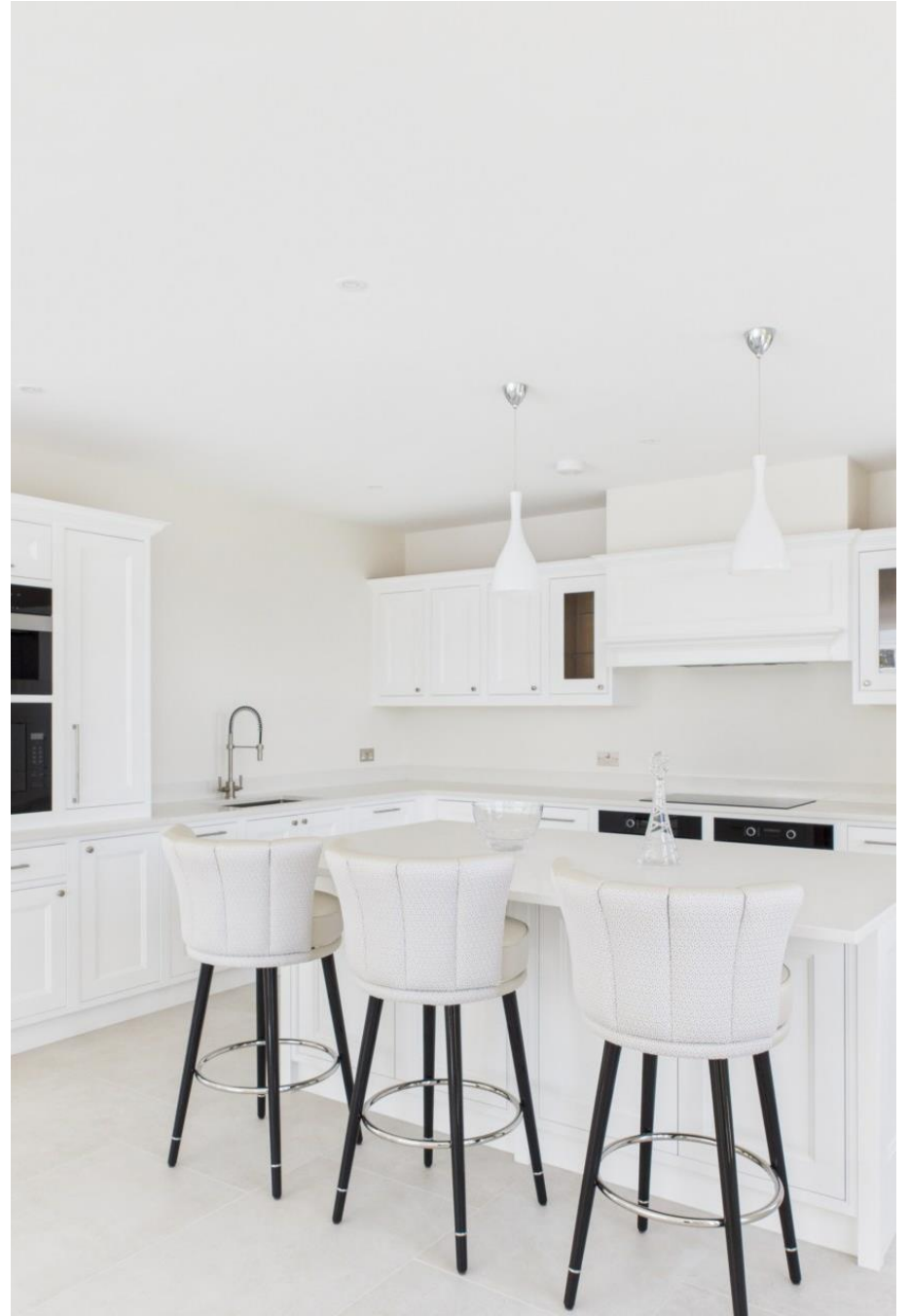
- Seven bedrooms/ Six bathrooms
- Over 5000 sq ft of accomodation
- Ground floor guest wing
- Exceptional master suite
- Heated swimming pool & pool house
- Ample parking and double garage



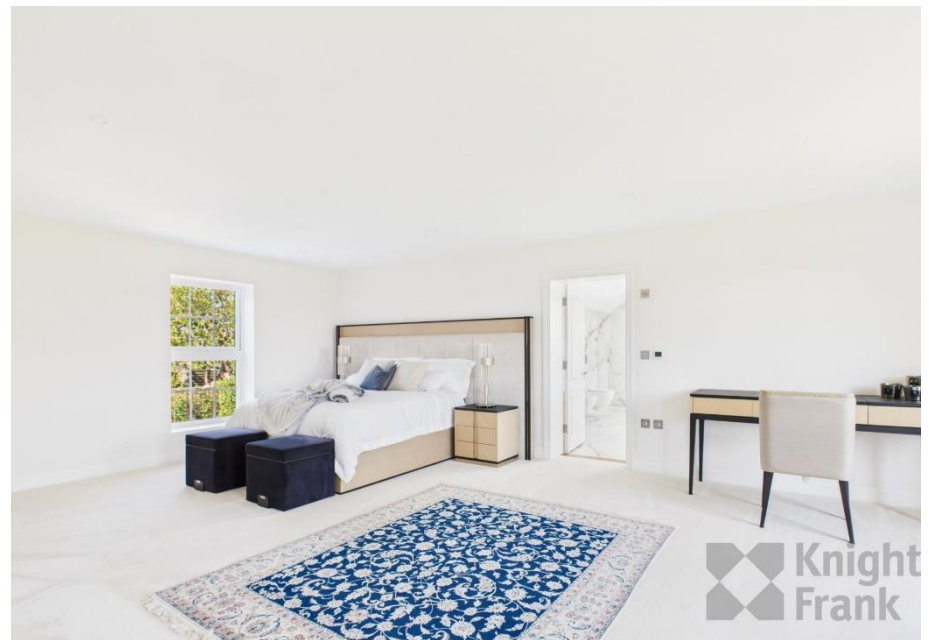
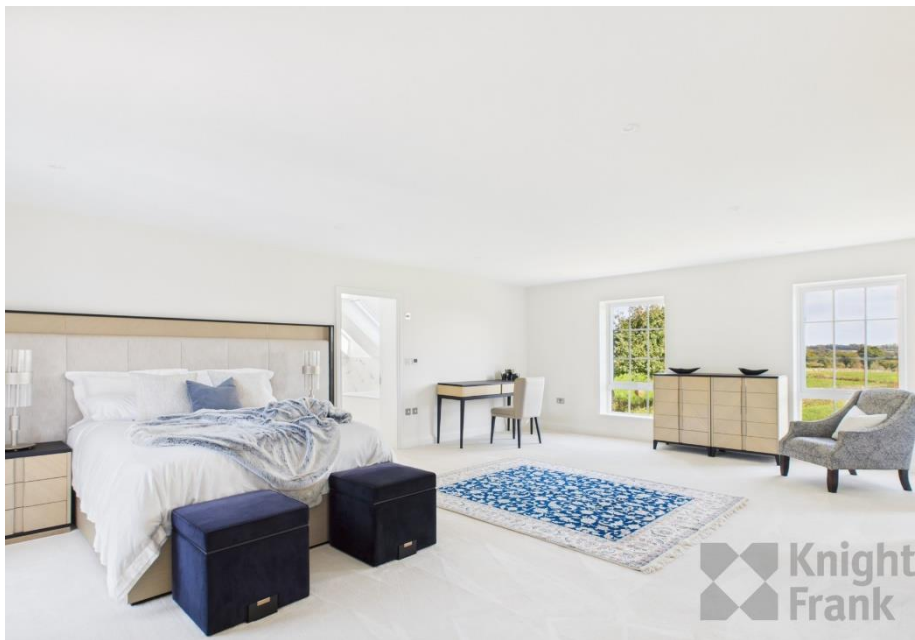
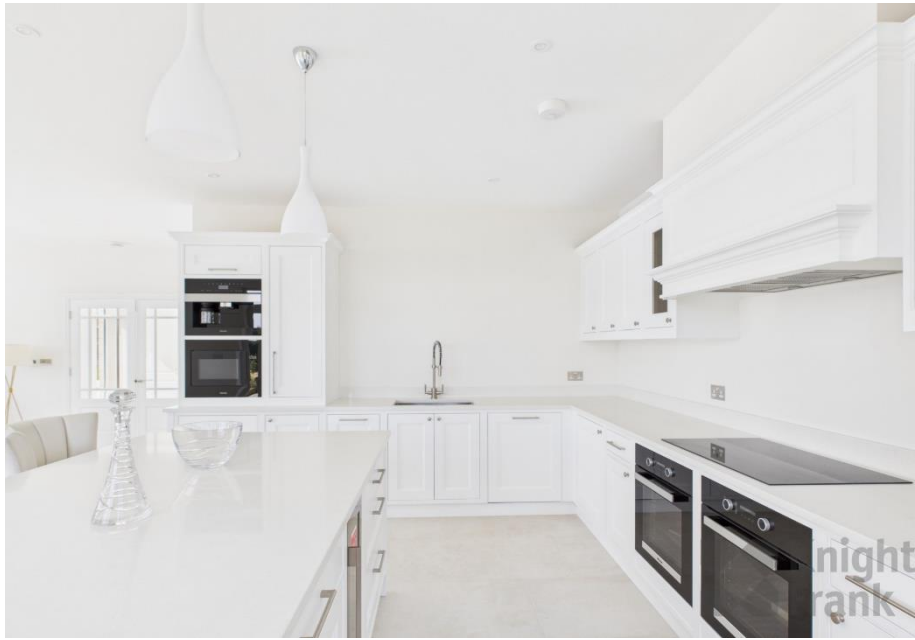


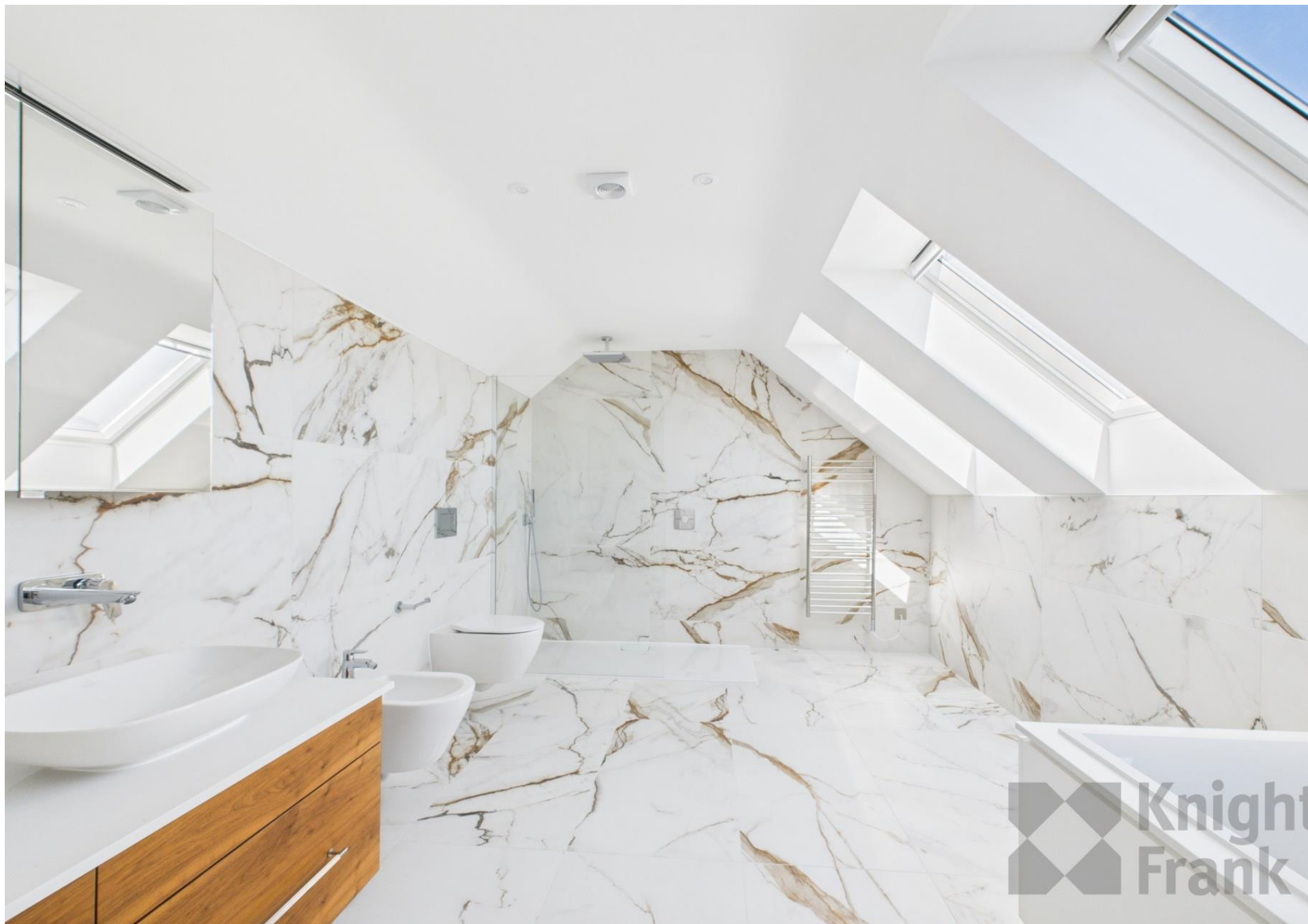


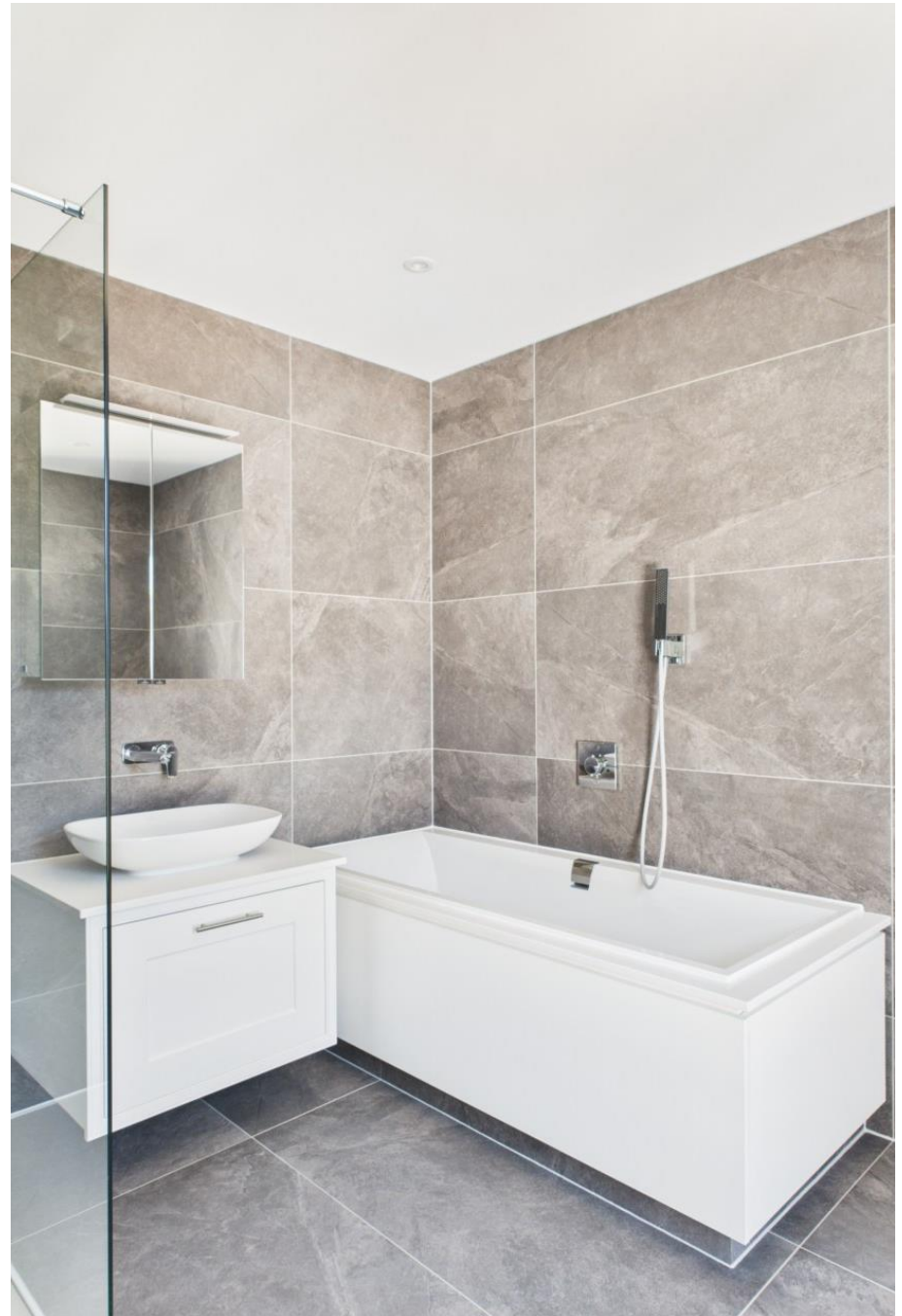
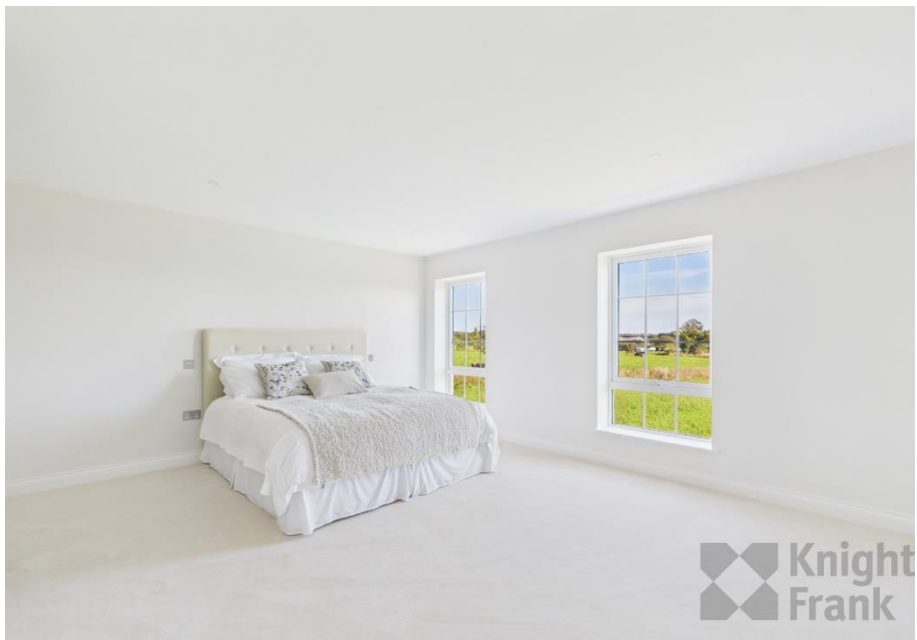




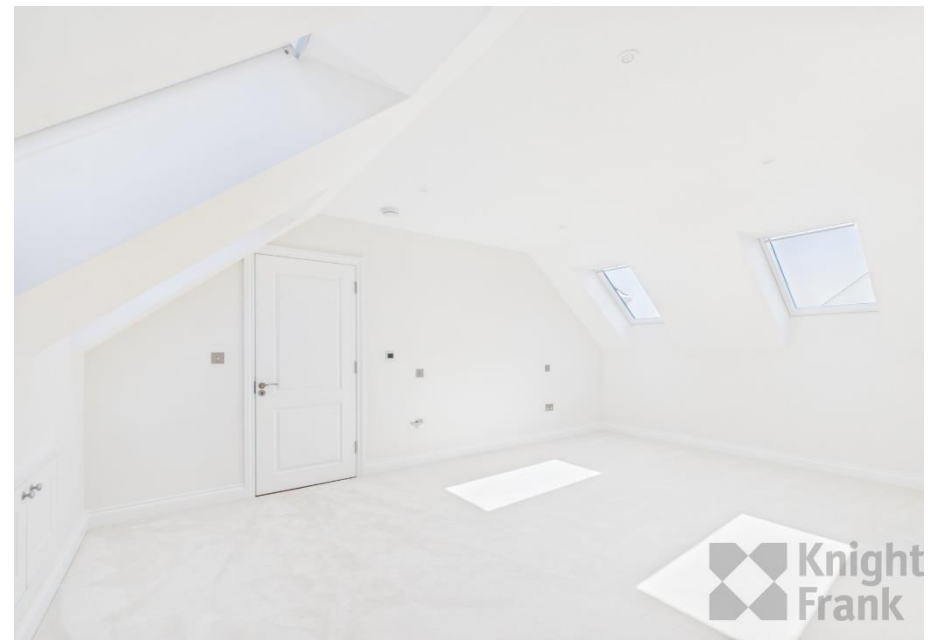
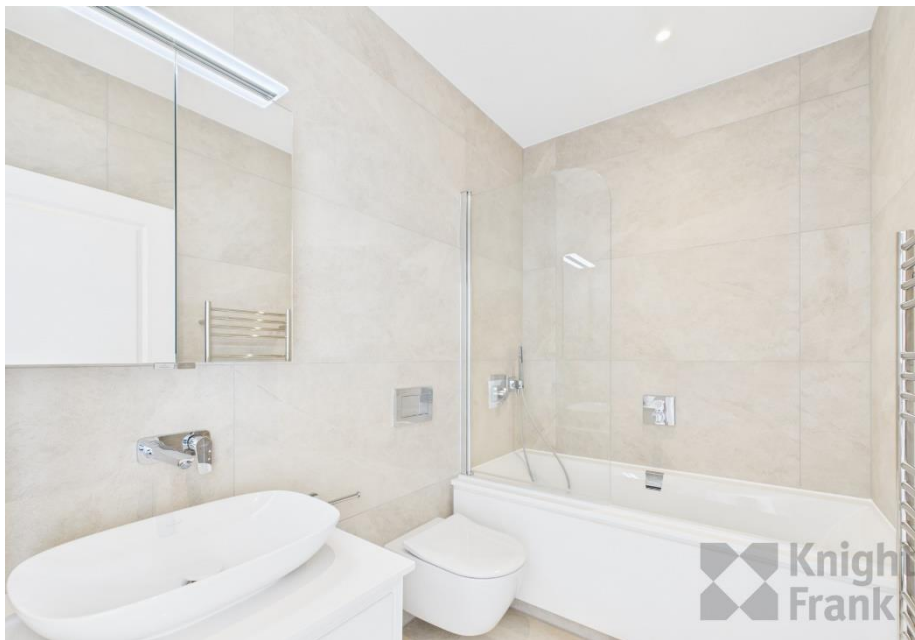




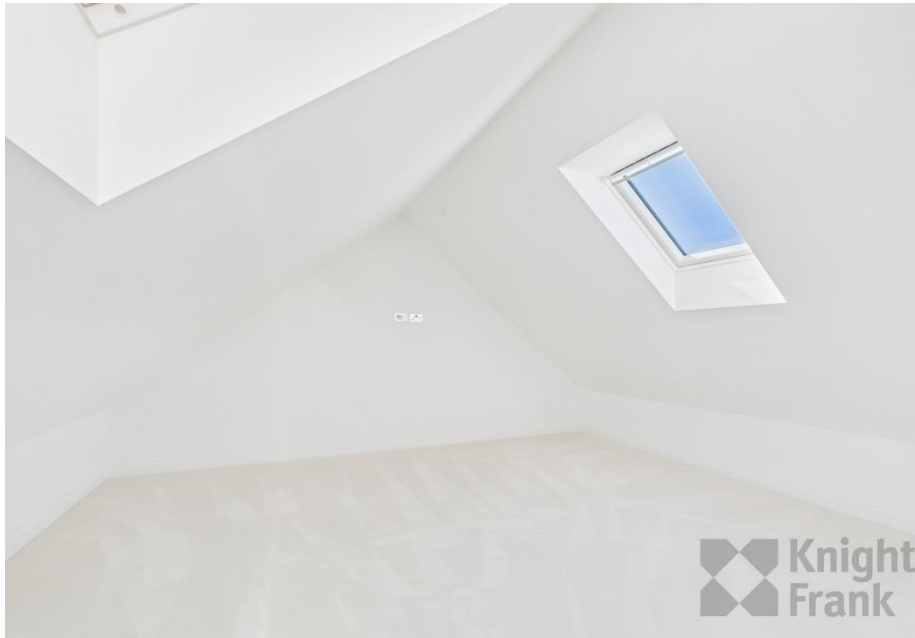












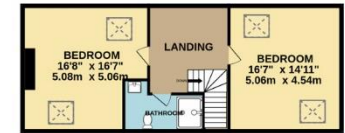
GROUND FLOOR
2678 sq.ft. (248.8 sq.m.) approx.



1ST FLOOR
1882 sq.ft. (174.9 sq.m.) approx.



2ND FLOOR
692 sq.ft. (64.3 sq.m.) approx.



TOTAL FLOOR AREA : 5253 sq.ft. (488.0 sq.m.) approx.

Whilst every attempt has been made to ensure the accuracy of the floorplan contained here, measurements of doors, windows, rooms and any other items are approximate and no responsibility is taken for any error, omission or mis-statement. This plan is for illustrative purposes only and should be used as such by any prospective purchaser. The services, systems and appliances shown have not been tested and no guarantee as to their operability or efficiency can be given.
Made with Metropix ©2025

This plan is for layout guidance only. Not drawn to scale unless stated. Windows and door openings are approximate. Whilst every care is taken in the preparation of this plan, please check all dimensions, shapes and compass bearings before making any decisions reliant upon them.

Services

Mains drains

Mains water

Double glazing

Underfloor heating

+441534 877977

Knight Frank Jersey

37-39 Halkett Place St Helier, Jersey JE2 4WG

knightfrank.je

Your partners in property

1. Particulars: These particulars are not an offer or contract, nor part of one. You should not rely on statements given by Knight Frank Jersey in the particulars, by word of mouth or in writing ("information") as being factually accurate about the property, its condition or its value. Neither Knight Frank Jersey nor any joint agent has any authority to make any representations about the property, and accordingly any information given is entirely without responsibility on the part of Knight Frank Jersey. 2. Material Information: Please note that the material information is provided to Knight Frank Jersey by third parties and is provided here as a guide only. While Knight Frank Jersey has taken steps to verify this information, we advise you to confirm the details of any such material information prior to any offer being submitted. If we are informed of changes to this information by the seller or another third party, we will use reasonable endeavours to update this as soon as practical. 3. Photos, Videos etc: The photographs, property videos and virtual viewings etc. show only certain parts of the property as they appeared at the time they were taken. Areas, measurements and distances given are approximate only. 4. Regulations etc: Any reference to alterations to, or use of, any part of the property does not mean that any necessary planning, building regulations or other consent has been obtained. A buyer must find out by inspection or in other ways that these matters have been properly dealt with and that all information is correct. 5. Fixtures and fittings: A list of the fitted carpets, curtains, light fittings and other items fixed to the property which are included in the sale (or may be available by separate negotiation) will be provided by the Seller's Lawyer. Particulars dated 24/09/2025. All information is correct at the time of going to print.

