



A109

Amarone





# A109, Amarone, St Helier, JE2 4BF

This first floor apartment has been thoughtfully designed to optimise space, light and comfort throughout. The open plan living and dining area enjoys direct access onto a large west facing terrace, creating a seamless connection between indoor and outdoor space.

The high specification kitchen features sleek handleless cabinetry, a Minerva worktop and quality integrated appliances, delivering a refined contemporary finish.

The well-proportioned double bedroom benefits from full height glazing that floods the room with natural light and provides access to the terrace.

The modern bathroom is completed with full-height ceramic tiling, chrome fittings, a wide mirror and a practical double vanity unit.

Additional features include a useful hallway storage cupboard with washing machine.

Secure parking is available to rent or purchase separately.



Parish: St Helier

Qualification: Qualified

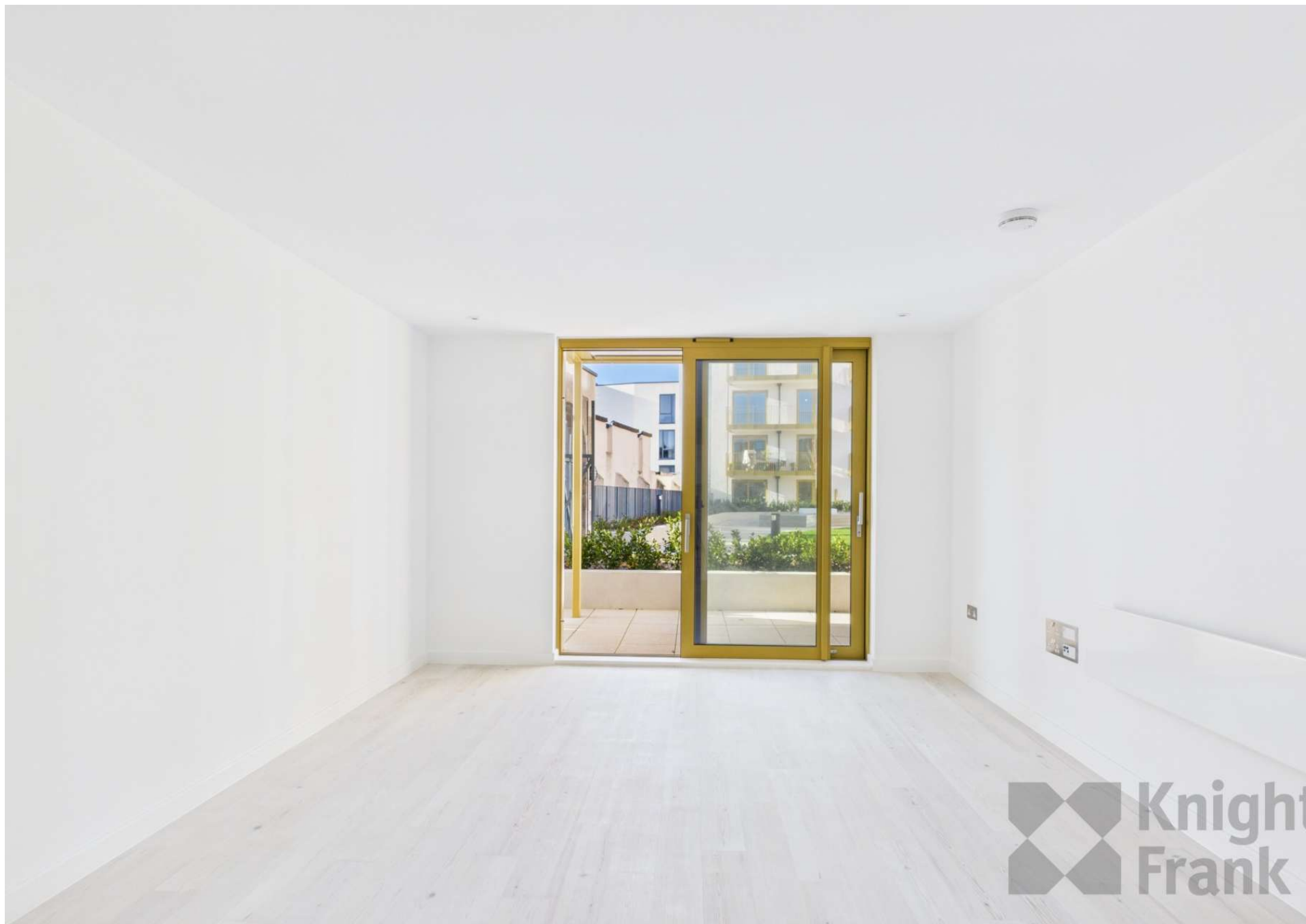
Tenure: Share Transfer

Price £360,000



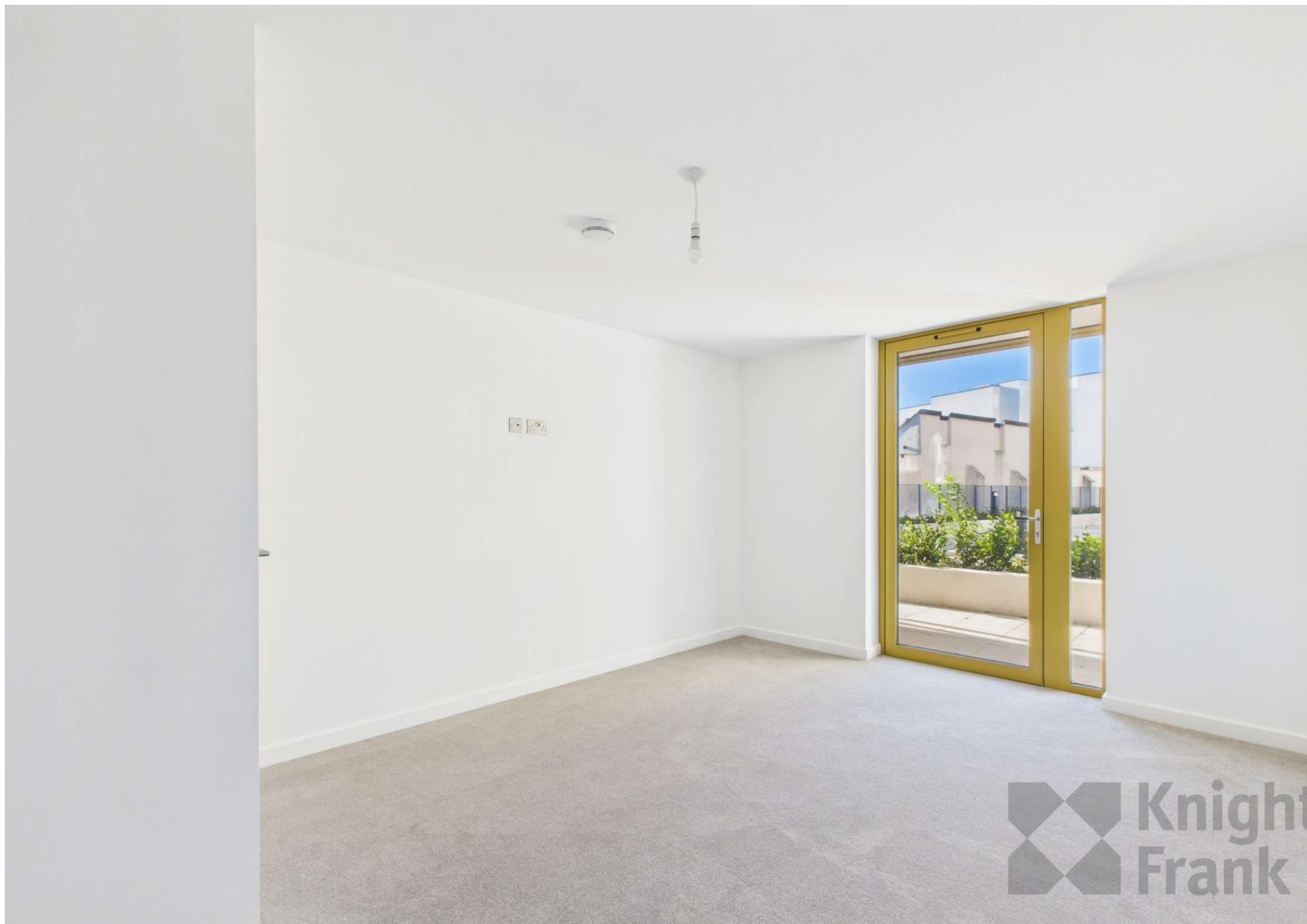
- Brand new one bedroom apartment
- Spacious open plan kitchen living space
- Well portioned double bedroom
- Contemporary bathroom with modern fittings
- Practical hallways with storage cupboard
- Private terrace

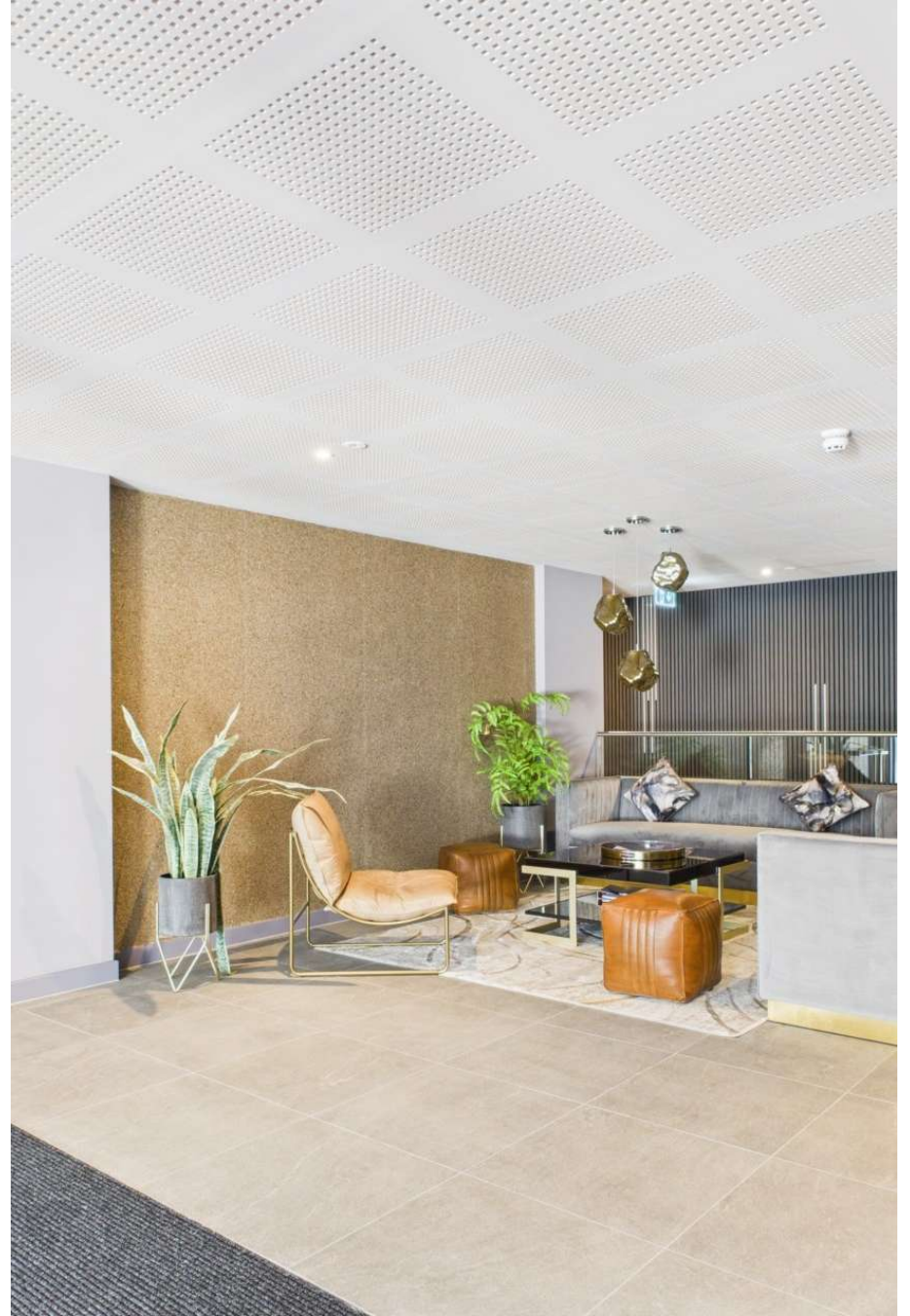












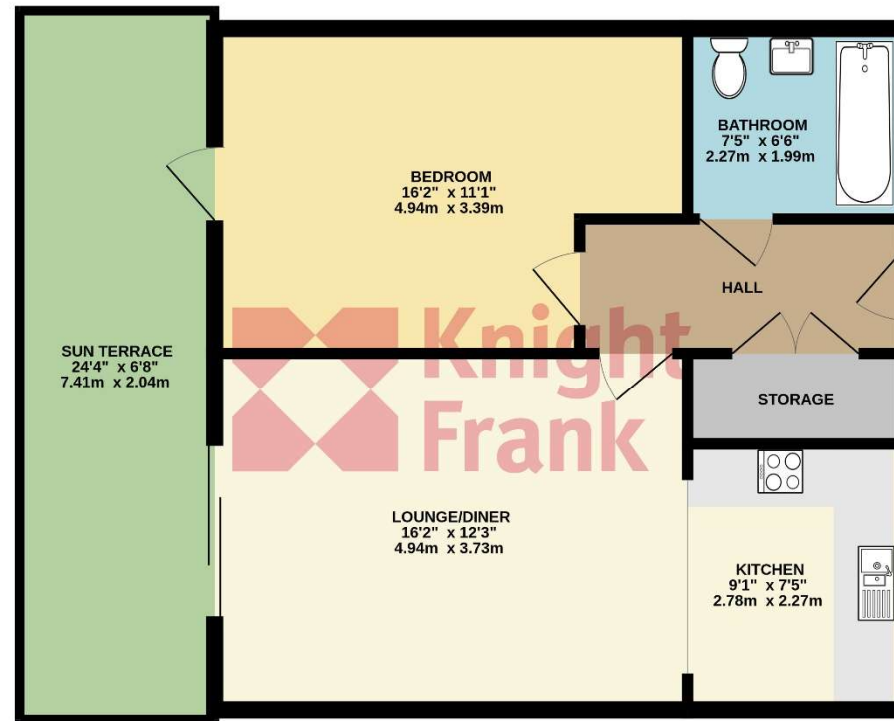




KITCHEN	
Item	Price
Item	Price
Item	Price
Item	Price
Item	Price
Item	Price
Item	Price



FIRST FLOOR  
552 sq.ft. (51.3 sq.m.) approx.



TOTAL FLOOR AREA: 552 sq.ft. (51.3 sq.m.) approx.  
Whilst every attempt has been made to ensure the accuracy of the floorplan contained here, measurements of doors, windows, rooms and any other items are approximate and no responsibility is taken for any error, omission or mis-statement. This plan is for illustrative purposes only and should be used as such by any prospective purchaser. The services, systems and appliances shown have not been tested and no guarantee as to their operability or efficiency can be given.  
Made with Metropix ©2025

This plan is for layout guidance only. Not drawn to scale unless stated. Windows and door openings are approximate. Whilst every care is taken in the preparation of this plan, please check all dimensions, shapes and compass bearings before making any decisions reliant upon them.



+441534 877977

Knight Frank Jersey

37-39 Halkett Place St Helier, Jersey JE2 4WG

[knightfrank.je](https://knightfrank.je)

Your partners in property

---

1. Particulars: These particulars are not an offer or contract, nor part of one. You should not rely on statements given by Knight Frank Jersey in the particulars, by word of mouth or in writing ("information") as being factually accurate about the property, its condition or its value. Neither Knight Frank Jersey nor any joint agent has any authority to make any representations about the property, and accordingly any information given is entirely without responsibility on the part of Knight Frank Jersey. 2. Material Information: Please note that the material information is provided to Knight Frank Jersey by third parties and is provided here as a guide only. While Knight Frank Jersey has taken steps to verify this information, we advise you to confirm the details of any such material information prior to any offer being submitted. If we are informed of changes to this information by the seller or another third party, we will use reasonable endeavours to update this as soon as practical. 3. Photos, Videos etc: The photographs, property videos and virtual viewings etc. show only certain parts of the property as they appeared at the time they were taken. Areas, measurements and distances given are approximate only. 4. Regulations etc: Any reference to alterations to, or use of, any part of the property does not mean that any necessary planning, building regulations or other consent has been obtained. A buyer must find out by inspection or in other ways that these matters have been properly dealt with and that all information is correct. 5. Fixtures and fittings: A list of the fitted carpets, curtains, light fittings and other items fixed to the property which are included in the sale (or may be available by separate negotiation) will be provided by the Seller's Lawyer. Particulars dated 04/12/2025. All information is correct at the time of going to print.

