



A111

Amarone





A111, Amarone, St Helier, JE2 4BF

Positioned on the first floor and finished to an excellent standard throughout, this two bedroom apartment offers bright, contemporary living complemented by an exceptional private terrace that spans the length of the property. Thoughtfully designed, the layout maximises the natural light and outdoor space.

The spacious open plan kitchen and living space, inviting impressive levels of light and elevated views across St Helier. Full height glazing and direct terrace access create a seamless connection between indoor and outdoor living; perfect for entertaining. The modern kitchen features sleek handlesless units, Minerva stone worktops and integrated appliances for clean, refined look.

Both bedrooms are well proportioned, with the main bedroom further enhanced by an ensuite bathroom. A second bathroom and generous hallway storage complete the interior.

In addition, secured parking is available to rent or purchase separately, offering valuable flexibility for residents who require private parking in the heart of town.



2



1



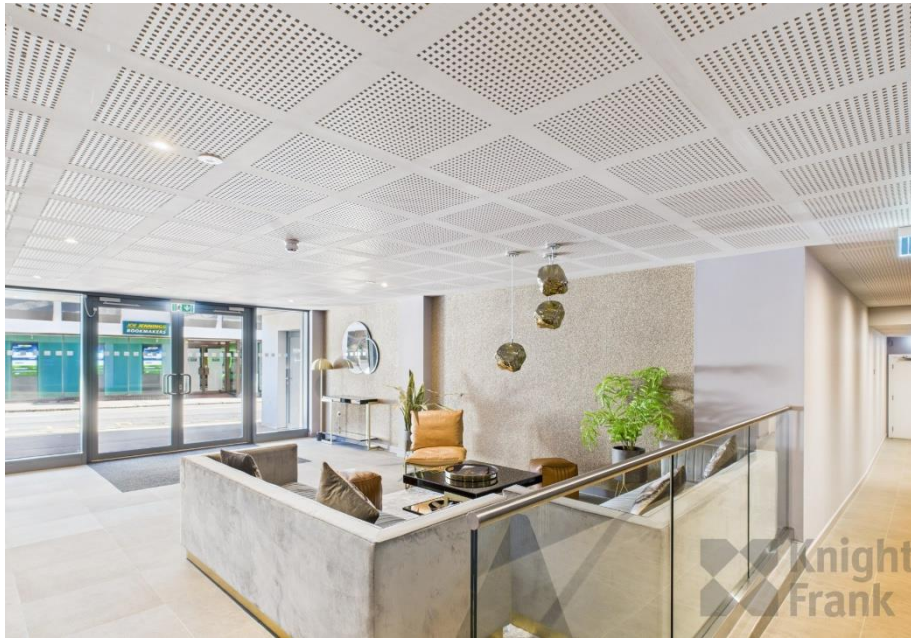
1

Parish: St Helier

Qualification: Qualified

Tenure: Tenure Not Known

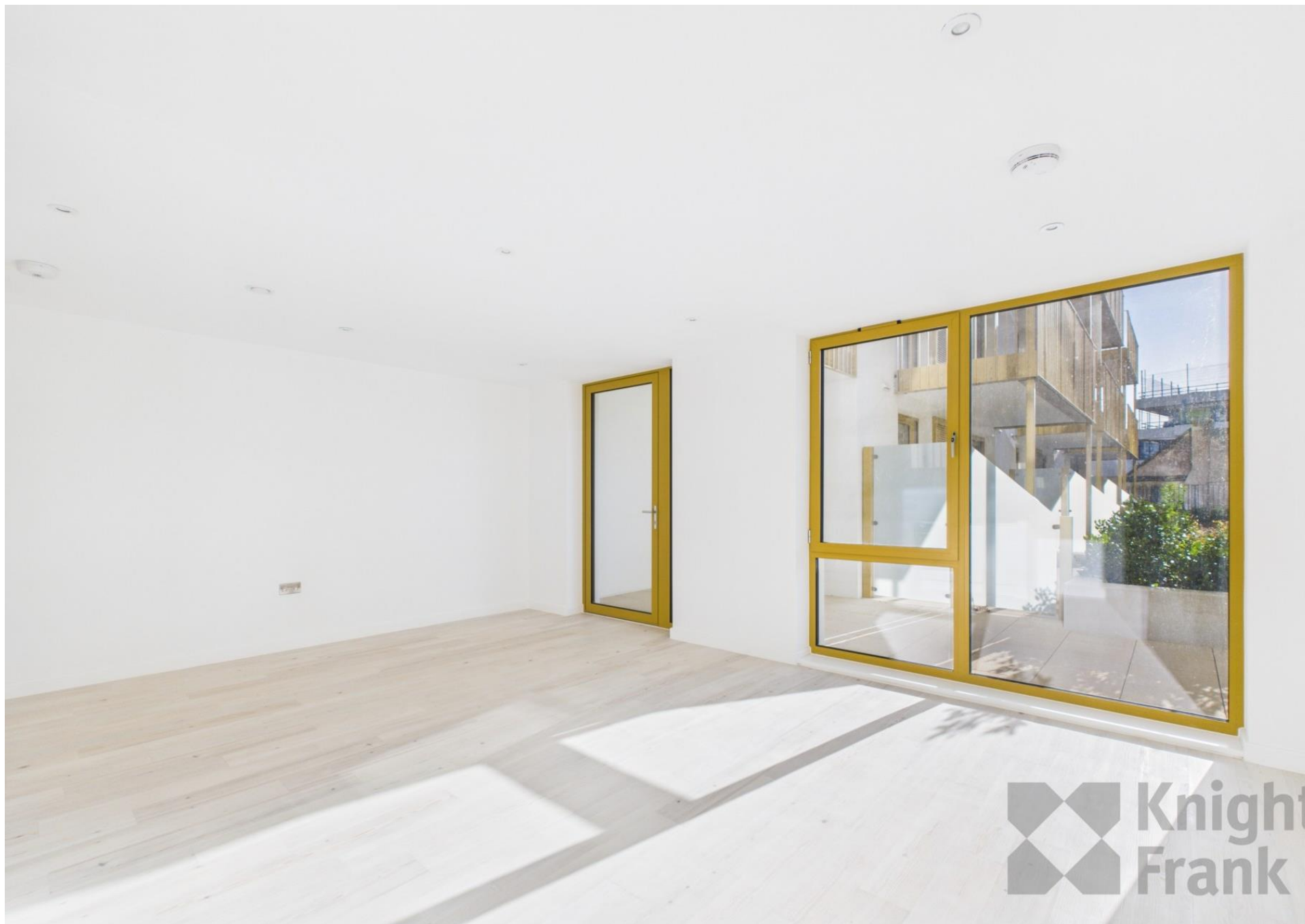
Price £460,000



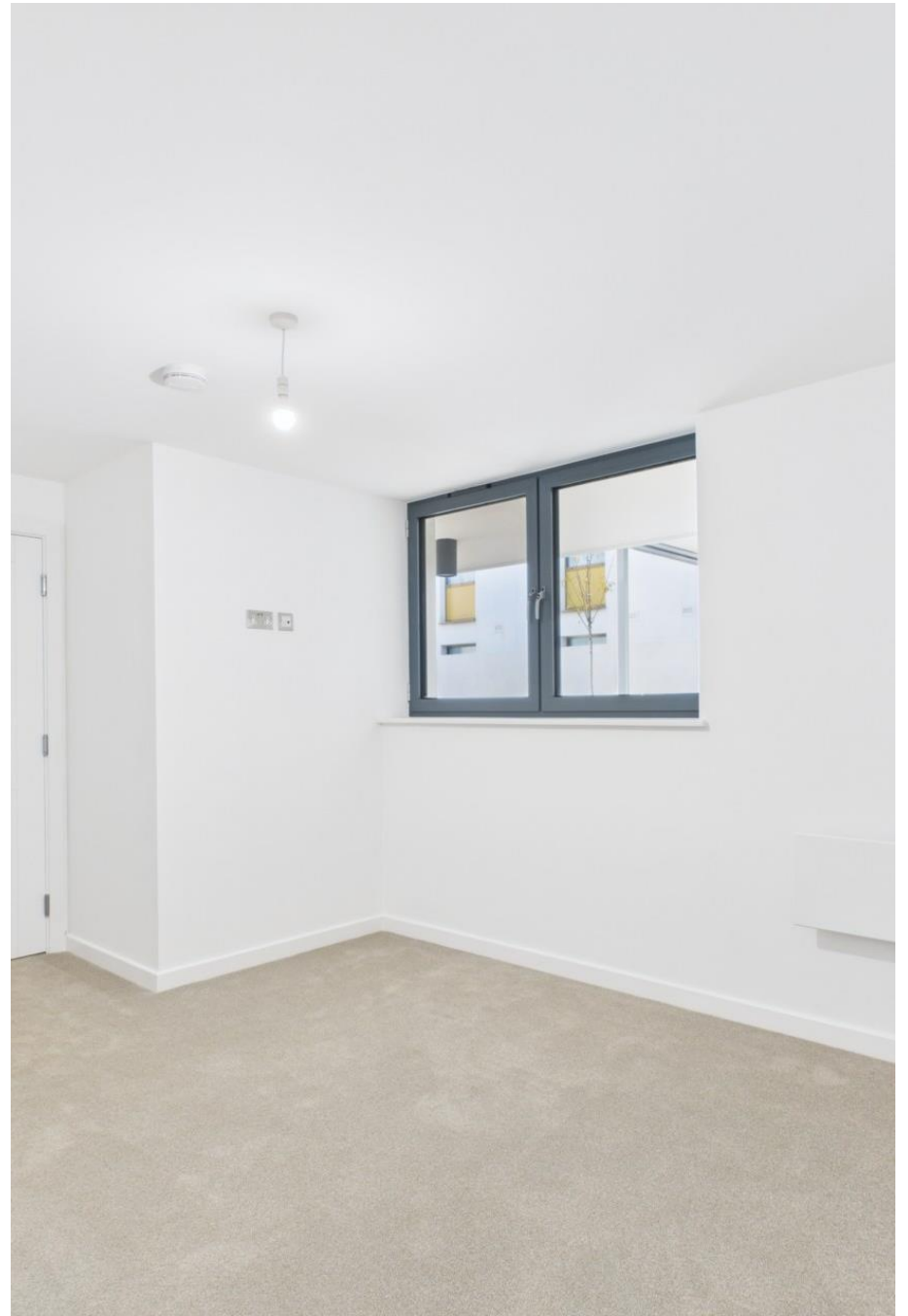
- Two bedroom first floor apartment finished to a high contemporary standard
- Open plan living space with full height glazing and excellent natural light
- Large private balcony with access from all the rooms
- Sleek modern kitchen with handleless units, minerva worktops and integrated appliances
- Main bedroom with ensuite, second room and separate house bathroom
- Secure parking available to rent or purchase separately



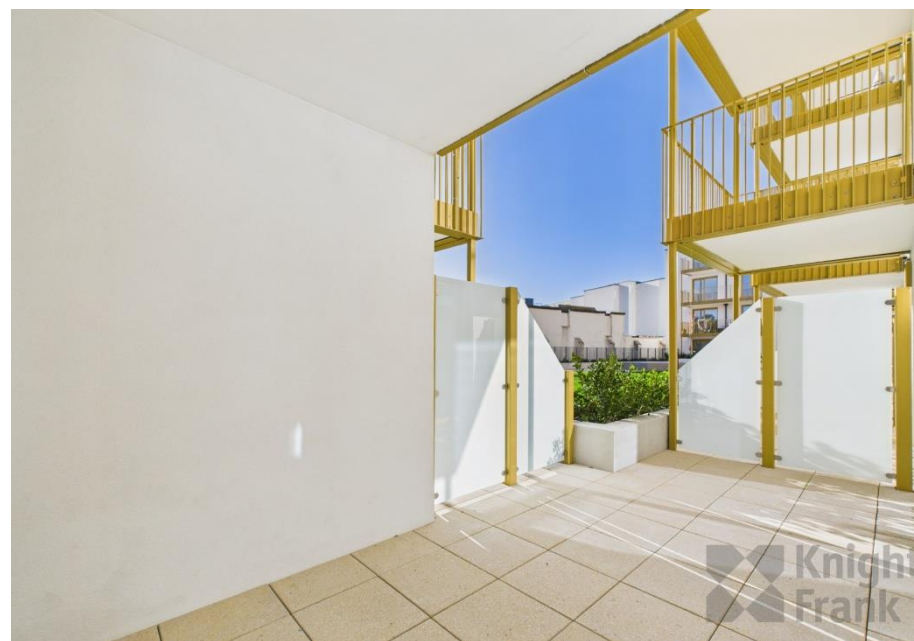
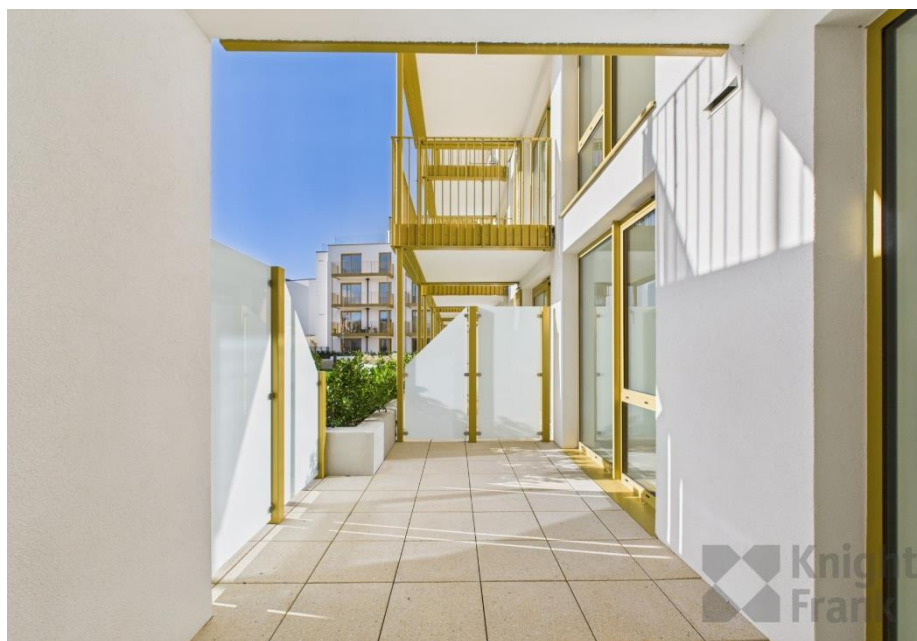
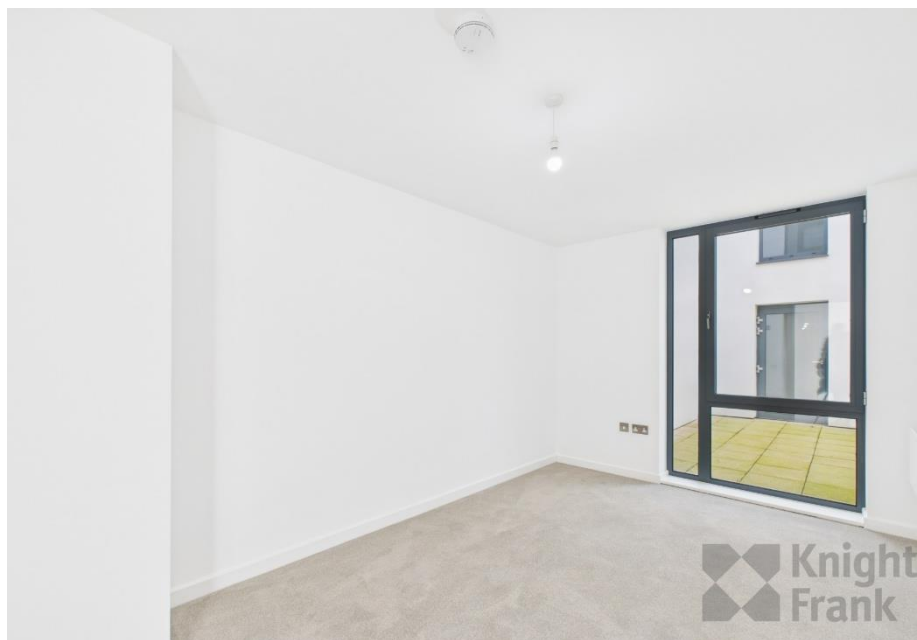




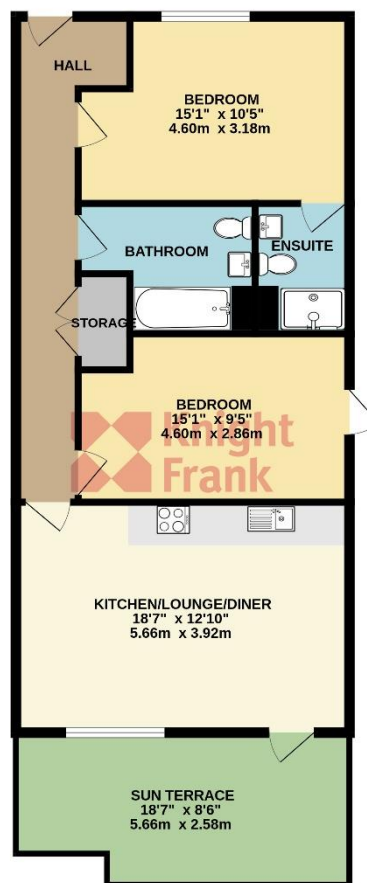








FIRST FLOOR
736 sq.ft. (68.4 sq.m.) approx.



TOTAL FLOOR AREA : 736 sq.ft. (68.4 sq.m.) approx.

Whilst every attempt has been made to ensure the accuracy of the floorplan contained here, measurements of doors, windows, rooms and any other items are approximate and no responsibility is taken for any error, omission or mis-statement. This plan is for illustrative purposes only and should be used as such by any prospective purchaser. The services, systems and appliances shown have not been tested and no guarantee as to their operability or efficiency can be given.
Made with Metropix ©2025

This plan is for layout guidance only. Not drawn to scale unless stated. Windows and door openings are approximate. Whilst every care is taken in the preparation of this plan, please check all dimensions, shapes and compass bearings before making any decisions reliant upon them.

+441534 877977

Knight Frank Jersey

37-39 Halkett Place St Helier, Jersey JE2 4WG

knightfrank.je

Your partners in property

1. Particulars: These particulars are not an offer or contract, nor part of one. You should not rely on statements given by Knight Frank Jersey in the particulars, by word of mouth or in writing ("information") as being factually accurate about the property, its condition or its value. Neither Knight Frank Jersey nor any joint agent has any authority to make any representations about the property, and accordingly any information given is entirely without responsibility on the part of Knight Frank Jersey. 2. Material Information: Please note that the material information is provided to Knight Frank Jersey by third parties and is provided here as a guide only. While Knight Frank Jersey has taken steps to verify this information, we advise you to confirm the details of any such material information prior to any offer being submitted. If we are informed of changes to this information by the seller or another third party, we will use reasonable endeavours to update this as soon as practical. 3. Photos, Videos etc: The photographs, property videos and virtual viewings etc. show only certain parts of the property as they appeared at the time they were taken. Areas, measurements and distances given are approximate only. 4. Regulations etc: Any reference to alterations to, or use of, any part of the property does not mean that any necessary planning, building regulations or other consent has been obtained. A buyer must find out by inspection or in other ways that these matters have been properly dealt with and that all information is correct. 5. Fixtures and fittings: A list of the fitted carpets, curtains, light fittings and other items fixed to the property which are included in the sale (or may be available by separate negotiation) will be provided by the Seller's Lawyer. Particulars dated 07/12/2025. All information is correct at the time of going to print.

